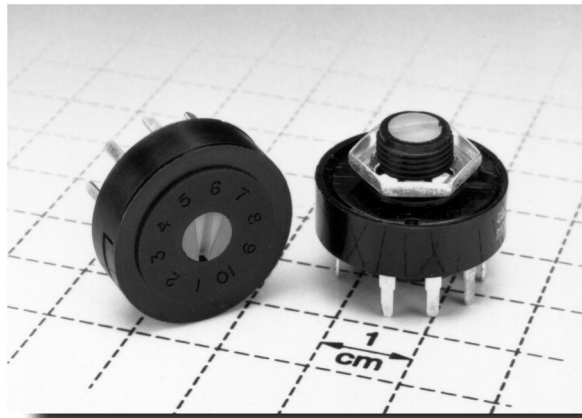


# R Series ROTA-SLIDE® Rotary Switches



## Features/Benefits

- Multi-pole and multi-position
- Positive detent
- Panel and PCB mounting
- Enclosed

## Typical Applications

- Ceiling fans
- Industrial equipment
- Portable tools



Rotary

## Build-A-Switch

Our easy Build-A-Switch concept allows you to mix and match options to create the switch you need. Below is a complete listing of options shown in catalog. To order, simply select desired option from each category and place in the appropriate box. A switch with standard options is shown on page I-9. Available options are shown and described on pages I-9 and I-10. For additional options not shown in catalog, consult Customer Service Center.

Typical Example: R 1 0 0 — 0 7 — R R — 0 3 — Q —  

### Switch Function

- R100** (STD.) SP, 36° Index, 10 pos. no stops
- R101** SPST, 36° Index
- R102** SPDT, 36° Indexing
- R103** SP, 36° Index, 3 pos.
- R104** SP, 36° Index, 4 pos.
- R105** SP, 36° Index, 5 pos.
- R106** SP, 36° Index, 6 pos.
- R107** SP, 36° Index, 7 pos.
- R108** SP, 36° Index, 8 pos.
- R109** SP, 36° Index, 9 pos.
- R200** DP, 36° Index, 5 pos. no stops
- R201** DPST, 36° Index
- R202** DPDT, 36° Index
- R203** DP, 36° Index, 3 pos.
- R204** DP, 36° Index, 4 pos.
- R205** DP, 36° Index, 5 pos.

### Actuator

- 07** (STD.) .500" high with .156" flat
- 05** .375" high with .156" flat
- 15** Screwdriver slot without bushing
- 16** Screwdriver slot with bushing

### Mounting Style

- RR** (STD.) 3/8-32 threaded bushing
- RN** PC without bushing
- RS** PC without bushing

### Terminations

- 03** (STD.) Solder lug with hole
- 01** Solder lug with notch
- 02** PC Thru-hole
- WC** Wire lead

### Contact Material

- Q** (STD.) Silver
- B** Gold
- G** Gold over silver

### Seal

- NONE** (STD.) No seal
- E** Epoxy seal

## Specifications

CONTACT RATING: Q contact material: 5 AMPS @ 125 V AC; 2.5 AMPS @ 250 V AC; 0.5 AMP @ 125 V DC (UL/CSA). See page I-10 for additional ratings.

ELECTRICAL LIFE: 10,000 make-and-break cycles at full load.

CONTACT RESISTANCE: Below 10 milliohms typ. initial @ 2-4 V DC, 100 mA, for both silver and gold plated contacts.

INSULATION RESISTANCE: 10<sup>9</sup> ohms min.

DIELECTRIC STRENGTH: 1,000 V RMS min. @ sea level.

INDEXING: 36°-one contact models, 10 position max.; two contact models, 5 position max.

## Materials

HOUSING & BUSHING: 6/6 nylon (UL 94V-2).

ACTUATOR: 6/6 nylon (UL 94V-2).

CONTACTS & TERMINALS: Q contact material: Copper, silver plated. See page I-10 for additional contact materials.

CONTACT SPRING: Music wire or stainless steel.

MOUNTING NUT: Steel, zinc plated.

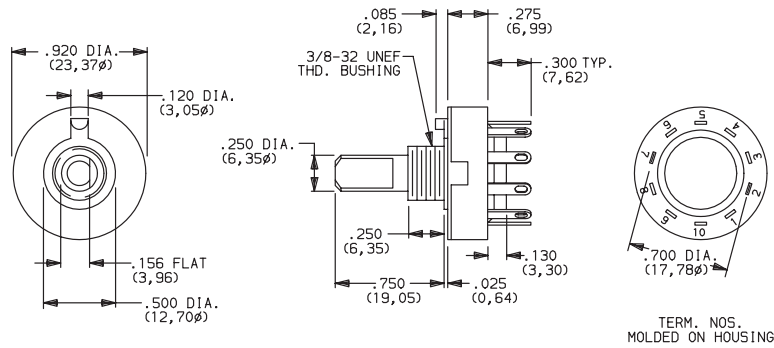
TERMINAL SEAL: Epoxy.

**NOTE:** Specifications and materials listed above are for switches with standard options. For information on specific and custom switches, consult Customer Service Center.

## SWITCH WITH STANDARD OPTIONS

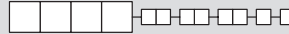
PART NUMBER	FUNCTION	INDEXING
<b>R10907RR03Q</b>	SP	36°

NOTE: For panel mounting information, see page I-10.



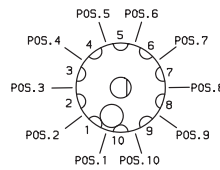
**R10007RR03Q**  
SP

## SWITCH FUNCTION

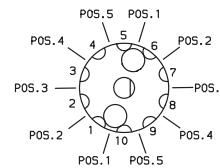


SP MODELS 36° INDEXING			
NO. POLES	MODEL NO.	SWITCH FUNCTION	TERMINALS
SP	<b>R100</b>	10 Position No Stops	All Terminals
	<b>R101</b>	SPST	1-2
	<b>R102</b>	SPDT	10-1-2
	<b>R103</b>	3 Position	10-1-2-3
	<b>R104</b>	4 Position	10-1-2-3-4
	<b>R105</b>	5 Position	10-1-2-3-4-5
	<b>R106</b>	6 Position	10-1-2-3-4-5-6
	<b>R107</b>	7 Position	10-1-2-3-4-5-6-7
	<b>R108</b>	8 Position	10-1-2-3-4-5-6-7-8
<b>R109</b>	9 Position	All Terminals	

### SP MODELS 36° INDEXING SCHEMATIC



### DP MODELS 36° INDEXING SCHEMATIC

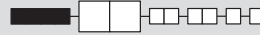


DP MODELS 36° INDEXING			
NO. POLES	MODEL NO.	SWITCH FUNCTION	TERMINALS
DP	<b>R200</b>	5 Position No Stops	All Terminals
	<b>R201</b>	DPST	1-2, 6-7
	<b>R202</b>	DPDT	10-1-2, 5-6-7
	<b>R203</b>	3 Position	10-1-2-3, 5-6-7-8
	<b>R204</b>	4 Position	All Terminals
	<b>R205</b>	5 Position	All Terminals

All models with all options when ordered with 'G' or 'Q' contact material.

NOTE: Break-before-make contacts. Actuators and contacts are shown in position 1. No common terminal is present. Switching function is provided by movable contacts shorting adjacent pairs of stationary contacts.

## ACTUATOR

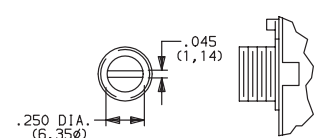
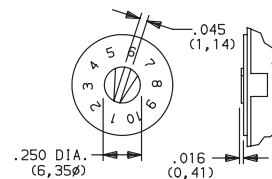
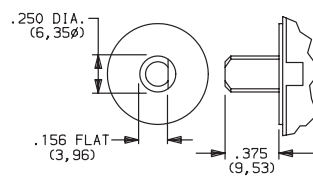
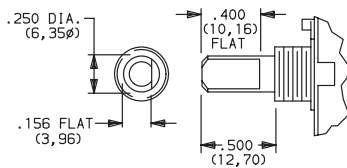


**07 (STD.)** .500" HIGH WITH .156" FLAT

**05** .375" HIGH WITH .156" FLAT

**15** SCREWDRIVER SLOT WITHOUT BUSHING

**16** SCREWDRIVER SLOT WITH BUSHING



Shown with 'RR' mounting style. For mounting styles without bushing, add .250 (6,35) to actuator length.

Shown with 'RN' mounting style.

Arrow on actuator marked red (std.). Shown with 'RS' mounting style.

Shown with 'RR' mounting style. For mounting styles without bushing, add .250 (6,35) to actuator length.

# R Series ROTA-SLIDE® Rotary Switches

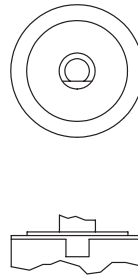
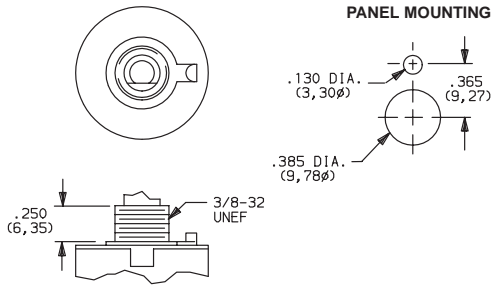


## MOUNTING STYLE

**RR** (STD.) 3/8-32 THREADED BUSHING

**RN** PC WITHOUT BUSHING

**RS** PC SCREWDRIVER SLOT WITHOUT BUSHING



Mounting nut included (part number 175000100).

Position numbers and characters are molded on housing.

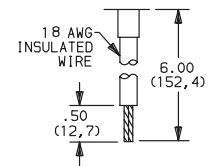
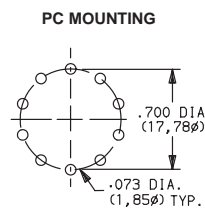
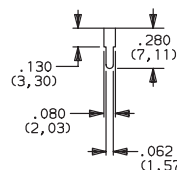
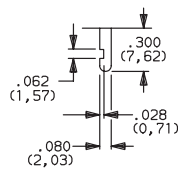
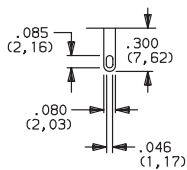
## TERMINATIONS

**03** (STD.) SOLDER LUG WITH HOLE

**01** SOLDER LUG WITH NOTCH

**02** PC THRU-HOLE

**WC** WIRE LEAD



.020 THK.  
(0, 51)

.020 THK.  
(0, 51)

.020 THK.  
(0, 51)

Black wire standard, other colors and lengths available, consult Customer Service Center. UL Style 1015.

## CONTACT MATERIAL

OPTION CODE	CONTACT AND TERMINAL MATERIAL	RATINGS	
<b>Q</b> (STD.)	SILVER <sup>2</sup>	POWER	5 AMPS @ 125 V AC; 2.5 AMPS @ 250 V AC; 0.5 AMP @ 125 V DC (UL/CSA).
<b>B</b>	GOLD <sup>1</sup>	LOW LEVEL/DRY CIRCUIT	0.4 VA MAX. @ 20 V AC OR DC MAX.
<b>G</b>	GOLD OVER SILVER <sup>3</sup>	LOW LEVEL/DRY CIRCUIT OR POWER	0.4 VA MAX. @ 20 V AC OR DC MAX. OR 5 AMPS @ 125 V AC; 2.5 AMPS @ 250 V AC; 0.5 AMP @ 125 V DC (UL/CSA).

CONTACT MATERIAL / APPLICATION RECOMMENDATIONS—SEE CHART, PAGE L-31.

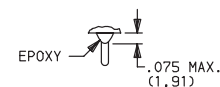
- CONTACTS & TERMINALS: Copper, with gold plate over nickel plate.
- CONTACTS & TERMINALS: Copper, silver plated. (Standard with all termination options.)
- CONTACTS & TERMINALS: Copper, with gold plate over silver plate.

All models with all options when ordered with 'G' or 'Q' contact material.

## SEAL

**NONE** (STD.) NO SEAL

**E** EPOXY SEAL



Rotary