

RBP12 Series

1-6 Pole Miniature Rotary Switches



Features/Benefits

- Rotary switch for low current
- Shaft perpendicular to PCB
- Index mechanism included in thickness of switch
- Several actuation modes
- Low profile
- RoHS Compliant

Typical Applications

- Medical
- Instrumentation
- Appliances

Electrical Data

	Silver (S)	Gold (G)
Switching mode	MBB-BBM Make Before Break, Break Before Make	MBB-BBM Make Before Break, Break Before Make
Max. switching power	5 VA (resistive)	0.5 VA (resistive)
Max. switching current	130 mA	20 mA
Max. carrying current	3 A	3 A
Contact resistance	< 15 m ohms	< 25 m ohms
Dielectric strength between contacts at 50 Hz	1000 V	1000 V
Dielectric strength or contacts and ground at 50 Hz	1000 V	1000 V
Nominal voltage	150 V rms	150 V rms
Number of operations	15,000	20,000
Insulation resistance between contacts and contacts and frame (500 Vcc)	> 5 x 10 ⁹ ohms	> 5 x 10 ⁹ ohms

Mechanical Data

Max. number of banks	1
Operating torque	2.5 Ncm ± 25% (1 pole)
Stop strength	> 40 Ncm
End stop	With/without or mobile
Contact material	Silver, Gold
Insulating material	Thermoplastic

NOTE: Specifications and materials listed above are for switches with standard options. For information specific and custom switches, consult Customer Service Center.

Environmental data

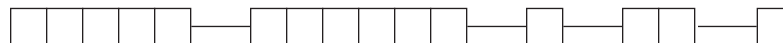
Storage temperature	- 25°C to + 70°C	- 25°C to + 85°C
Salt spray	NA	48 H

Further data

Solderability	Hand: 350°C/5 s	Wave: 260°C/5 s max.
Cleaning	Cleaning of modules prohibited	

Build-A-Switch

To order, simply select desired option from each category and place in the appropriate box. Available options are shown and described on pages L-19 thru L-21. For additional options not shown in catalog, consult Customer Service Center.



Designation

RBP12

Switch Function

- 112S** SP, 30° Index, 12 pos. no stop
- 103B03** SP, 30° Index, 3 pos.
- 105B05** SP, 30° Index, 5 pos.
- 107B07** SP, 30° Index, 7 pos.
- 108B08** SP, 30° Index, 8 pos.
- 110B10** SP, 30° Index, 10 pos.
- 112B12** SP, 30° Index, 12 pos.
- 206S** DP, 30° Index, 6 pos. no stop
- 202B02** DP, 30° Index, 2 pos.
- 203B03** DP, 30° Index, 3 pos.
- 205B05** DP, 30° Index, 5 pos.
- 304B04** 3P, 30° Index, 4 pos.
- 403B03** 4P, 30° Index, 3 pos.
- 602B02** 6P, 30° Index, 2 pos.

Switching Mode

- N** Non-shorting BBM (break-before-make)
- C** Shorting, MBB (make-before-break)

Actuator

- F** Screwdriver slot*
- AD** Plastic shaft, <20mm (.787)*
- S** Plastic shaft, 6mm (.236)*
- M** Thumbwheel

Contact Material

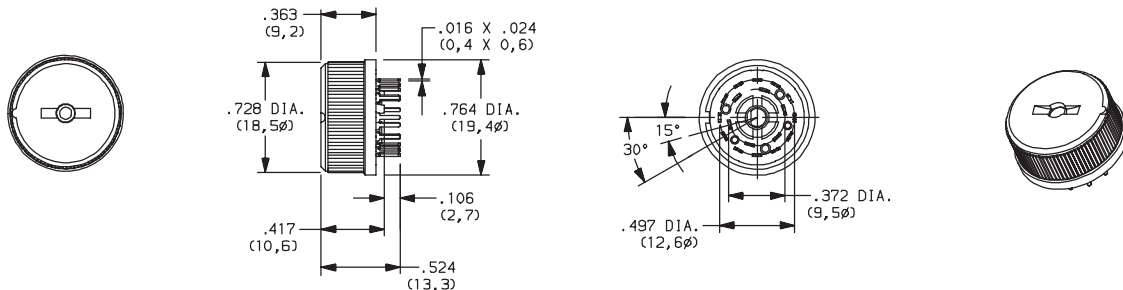
- S** Silver
- G** Gold

*Option: Metallic shaft available by request

RBP12 Series 1-6 Pole Miniature Rotary Switches

DESIGNATION

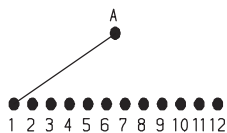
RBP12



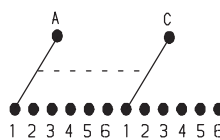
SWITCH FUNCTION

30° INDEXING		
NO. POLES	MODEL NO.	SWITCH FUNCTION
SP	112S	12 Position No Stops
	103B03	3 Positions
	105B05	5 Positions
	107B07	7 Positions
	108B08	8 Positions
	110B10	10 Positions
DP	206S	6 Positions No Stop
	202B02	3 Positions
	203B03	3 Positions
	205B05	5 Positions

SP MODELS SCHEMATIC

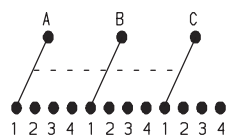


DP MODELS SCHEMATIC

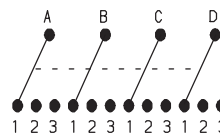


30° INDEXING		
NO. POLES	MODEL NO.	SWITCH FUNCTION
3P	304B04	4 Positions
4P	403B03	3 Positions
6P	602B02	2 Positions

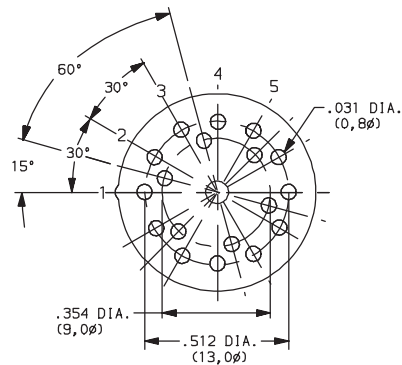
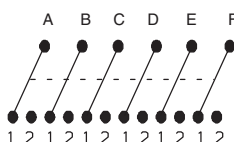
3P MODELS SCHEMATIC



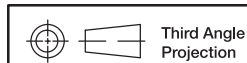
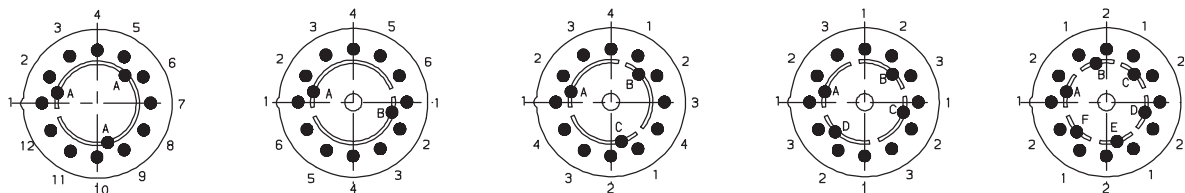
4P MODELS SCHEMATIC



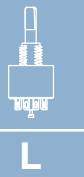
6P MODELS SCHEMATIC



PC LAYOUTS



Dimensions are shown: Inch (mm)
Specifications and dimensions subject to change



Rotary

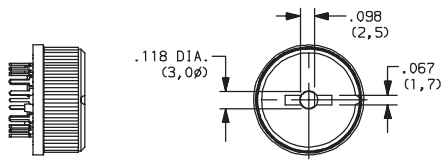
RBP12 Series 1-6 Pole Miniature Rotary Switches

SWITCHING MODE

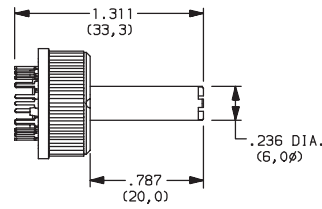
- N** NON-SHORTING, BBM (break-before-make)
- C** SHORTING, MBB (make-before-break)

ACTUATOR

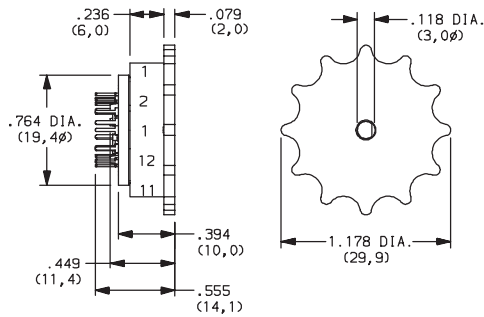
F SCREWDRIVER SLOT



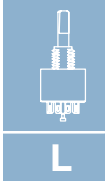
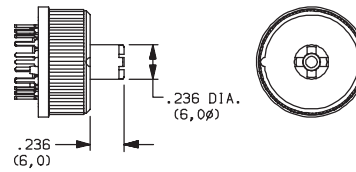
AD PLASTIC SHAFT, <20 mm (.787)



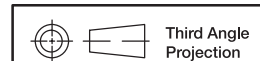
M THUMBWHEEL



S PLASTIC SHAFT, 6 mm (.236)



Rotary



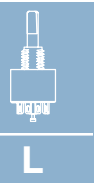
Dimensions are shown: Inch (mm)
Specifications and dimensions subject to change

RBP12 Series 1-6 Pole Miniature Rotary Switches

CONTACT MATERIAL

OPTION CODE	CONTACT AND TERMINAL MATERIAL	RATING	
S	SILVER	LOW LEVEL/DRY CIRCUIT	SWITCH: 130 mA, POWER: 5 VA MAXIMUM. CARRY: 3 AMPS
G	GOLD	LOW LEVEL/DRY CIRCUIT OR POWER	SWITCH: 20 mA, POWER: 0.5 VA MAXIMUM. CARRY: 3 AMPS

* Note: See Technical Data section of this catalog for RoHS compliant and compatible definition and specifications.



Rotary



Third Angle Projection
Dimensions are shown: Inch (mm)
Specifications and dimensions subject to change