

JS Series Sub-Miniature Slide Switches

Features/Benefits

- Positive detent
- Low profile
- IR reflow to 260° solder profile
- Surface and thru hole mounting
- SPDT, DPDT, DP3T models
- RoHS compliant

Typical Applications

- Telecommunication products
- Computer peripherals
- Thermostat select switch
- Instrumentations



Specifications

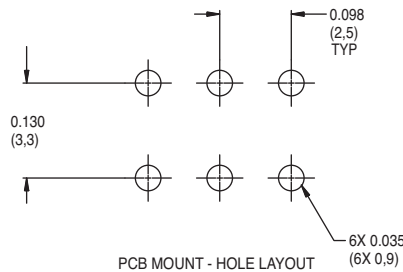
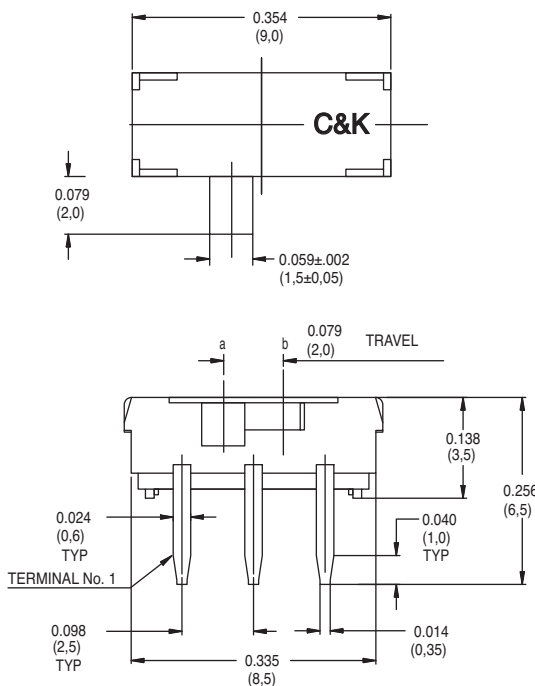
CONTACT RATING: 6 VDC @ 0.3A
 ELECTRICAL LIFE: 5,000 make-and-break cycles at full load.
 CONTACT RESISTANCE: 70 mA max initial.
 INSULATION RESISTANCE: 100 ohms @500 VDC
 DIELECTRIC STRENGTH: 500 VAC min. @ sea level.
 OPERATING TEMPERATURE: -10°C to +60°C
 STORAGE TEMPERATURE: -30°C to +85°C

NOTE: Specifications and materials listed above are for switches with standard options.
 For information on specific and custom switches, consult Customer Service Center.

Materials

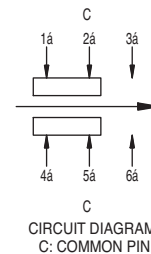
HOUSING: 4/6 nylon (UL94V-2), black.
 ACTUATOR: 4/6 nylon (UL94V-2), black.
 CONTACTS: Copper alloy, silver plated.
 TERMINALS: Brass, silver plated

RIGHT ANGLE, PC THRU-HOLE



Part Number
 JS202011AQN
 DPDT

Shown in position 1a

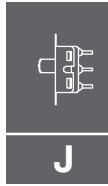


Dimensions are shown: Inch (mm)
 Specifications and dimensions subject to change

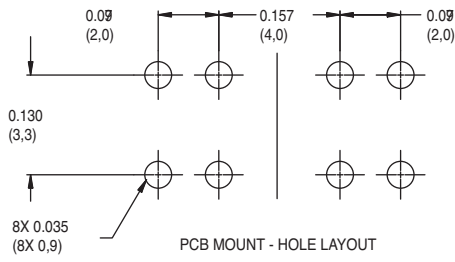
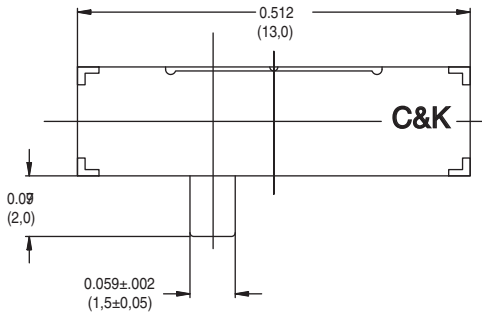


Slide

JS Series Sub-Miniature Slide Switches

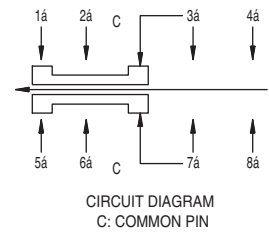
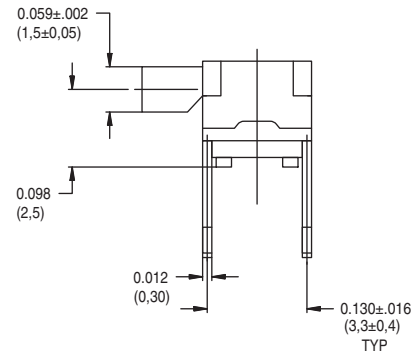
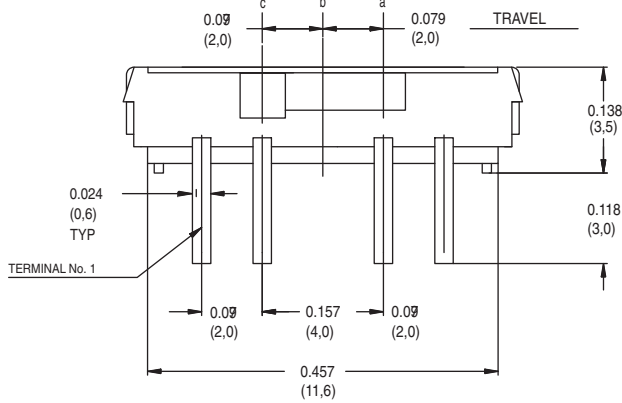


Slide

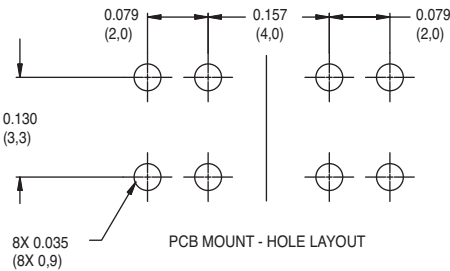
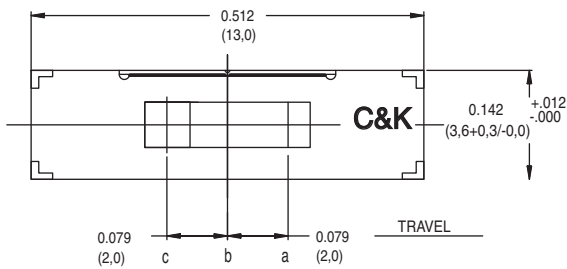


Part Number
JS203011AQN
DP3T

Shown in position 1a

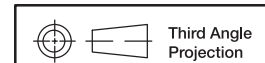
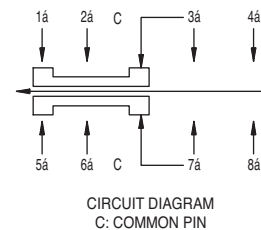
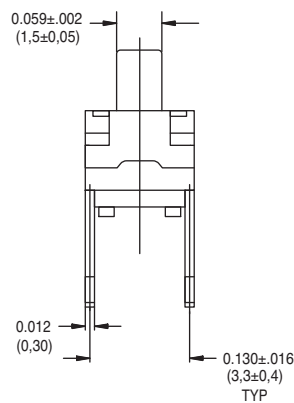
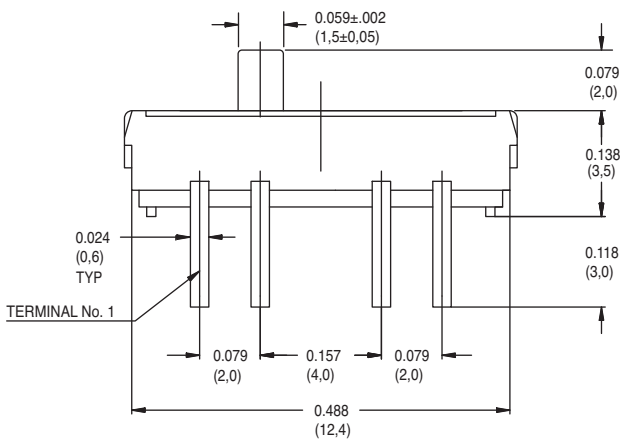


PC THRU-HOLE



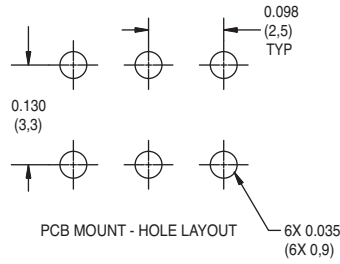
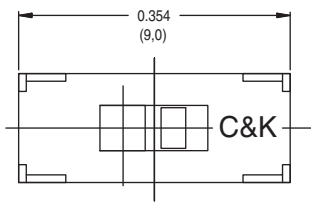
Part Number
JS203011CQN
DP3T

Shown in position 1a



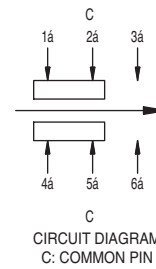
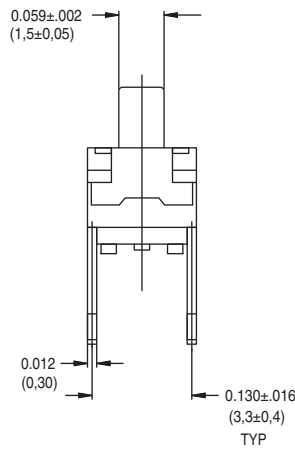
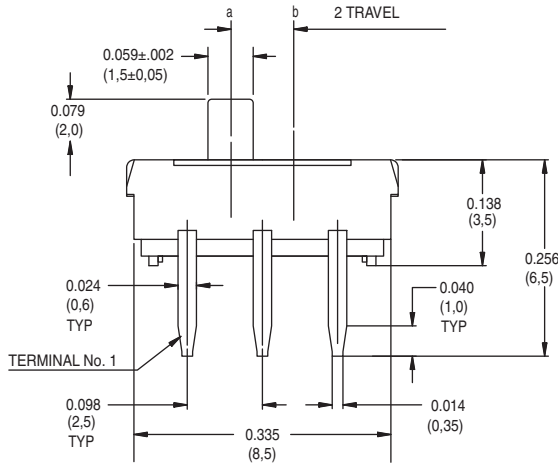
Dimensions are shown: Inch (mm)
Specifications and dimensions subject to change

JS Series Sub-Miniature Slide Switches



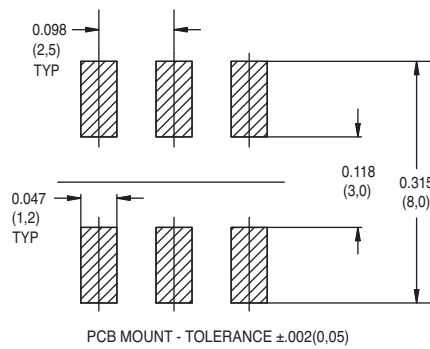
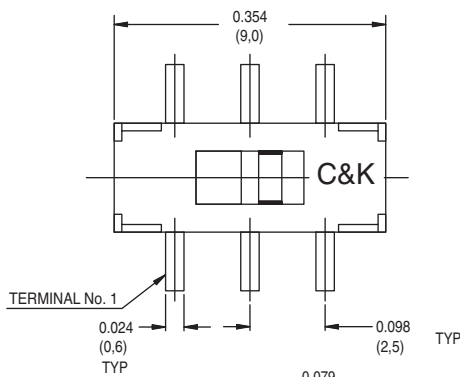
Part Number
JS202011CQN
DPDT

Shown in position 1a



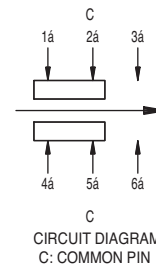
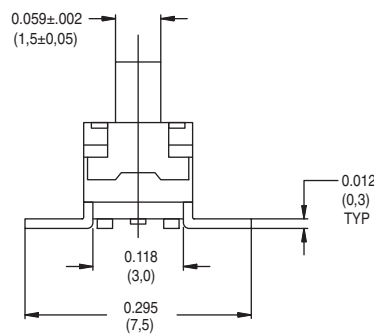
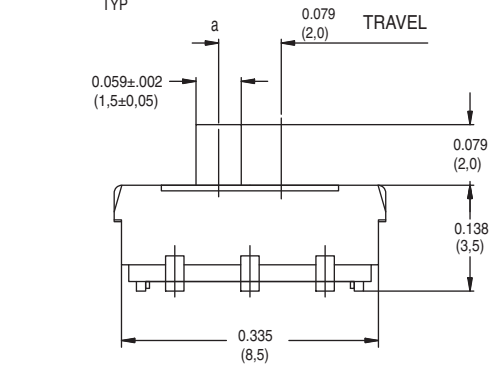
Slide

SURFACE MOUNT



Part number
JS202011SCQN
DPDT

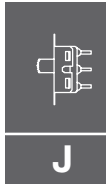
Shown in position 1a



Dimensions are shown: Inch (mm)
Specifications and dimensions subject to change

JS Series Sub-Miniature Slide Switches

RIGHT ANGLE SURFACE MOUNT

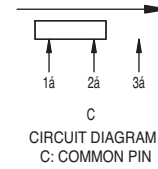
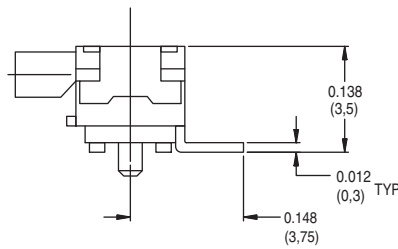
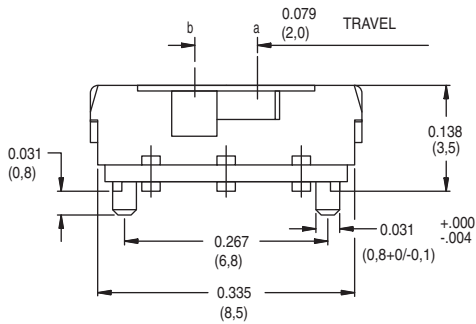
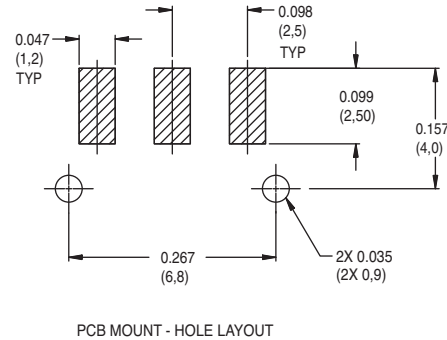
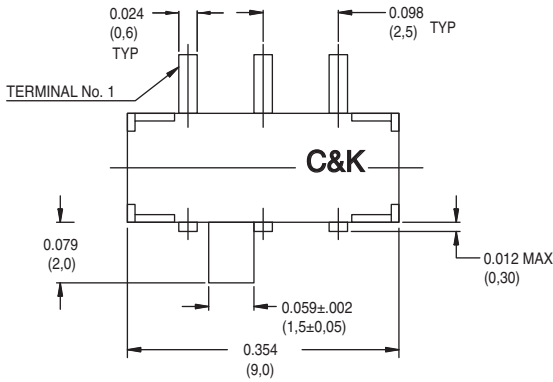


Slide



Part Number
JS102011SAQN
SPDT

Shown in position 1a



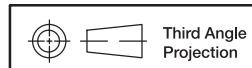
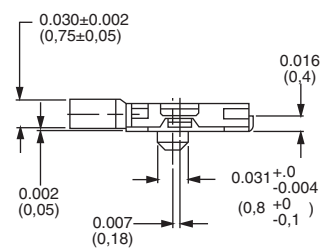
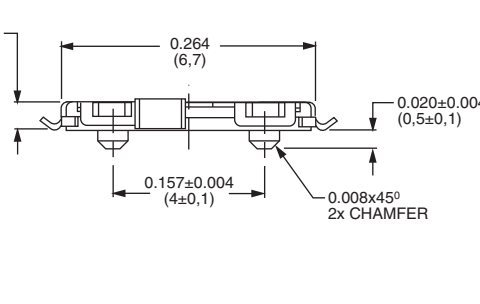
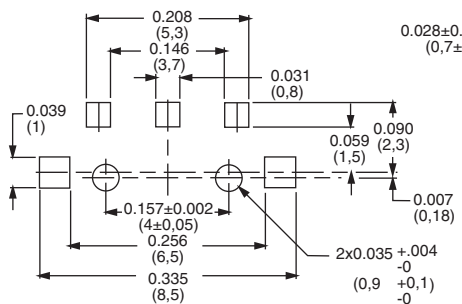
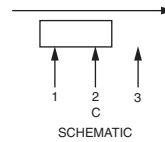
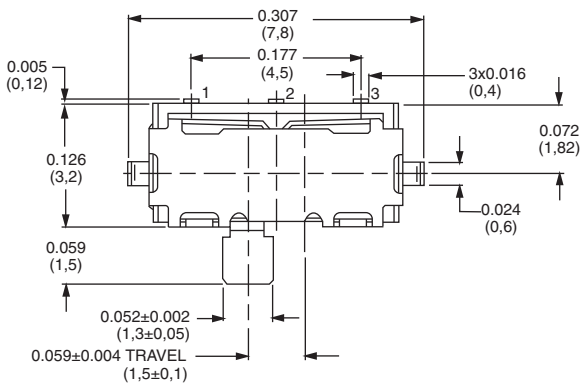
RIGHT ANGLE SURFACE MOUNT
LOW PROFILE .028±.004 (0.7±0.1) HIGH

Specifications

- CONTACT RATING: 5 VDC @ 1MA
- ELECTRICAL LIFE: 10,000 cycles.
- CONTACT RESISTANCE: <100 m ohms (initial) <200 m ohms (after processing).
- INSULATION RESISTANCE: 100 m ohms @500 VDC.
- DIELECTRIC STRENGTH: 250 VAC.
- OPERATING TEMPERATURE: -20°C to +70°C



Part Number
JS102000SAQN
SPDT

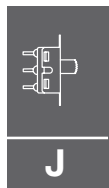
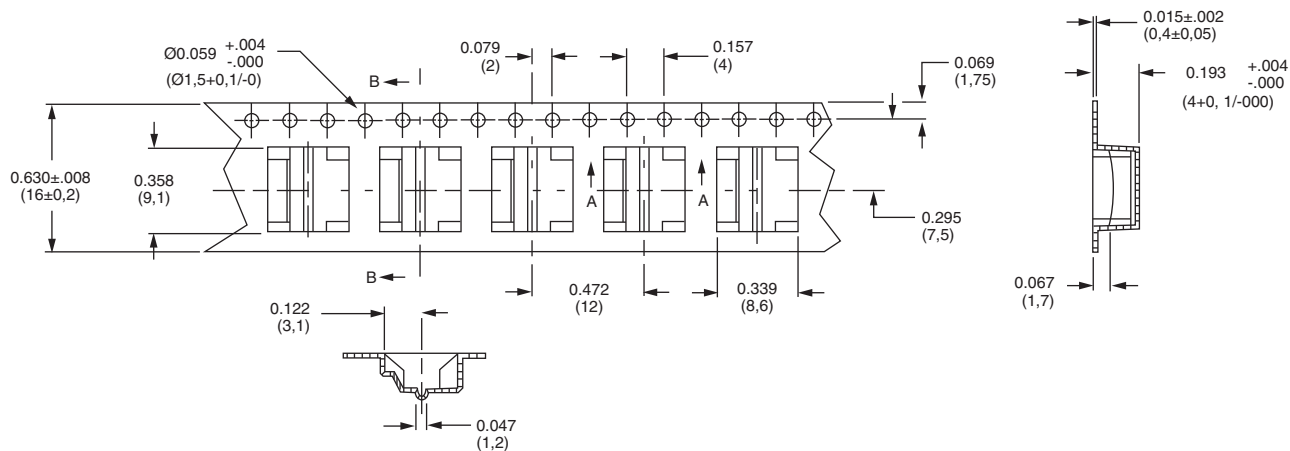


Dimensions are shown: Inch (mm)
Specifications and dimensions subject to change

JS Series Sub-Miniature Slide Switches

TAPE AND REEL FOR PART NUMBER JS10211SAQN

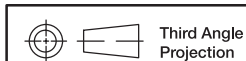
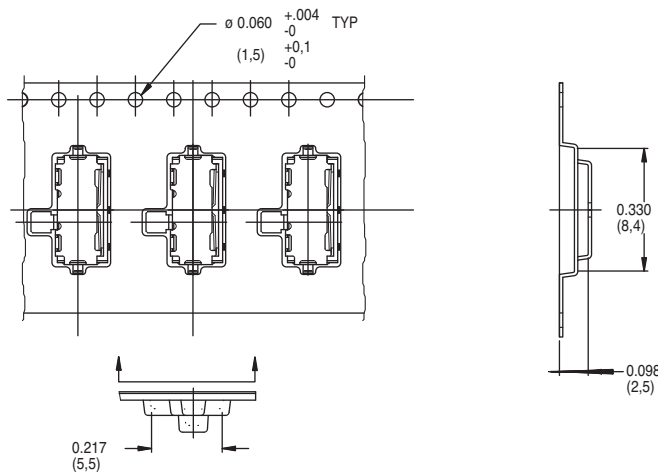
Quantity per reel 1000



Slide

TAPE AND REEL FOR PART NUMBER JS102000SAQN

Quantity per reel 4000



Third Angle Projection
Dimensions are shown: Inch (mm)
Specifications and dimensions subject to change