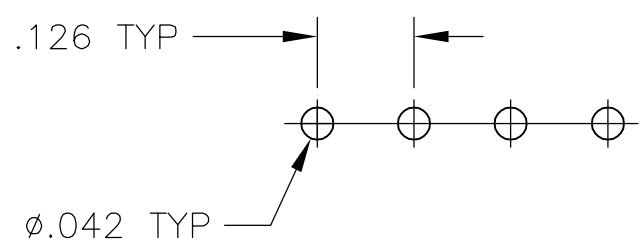
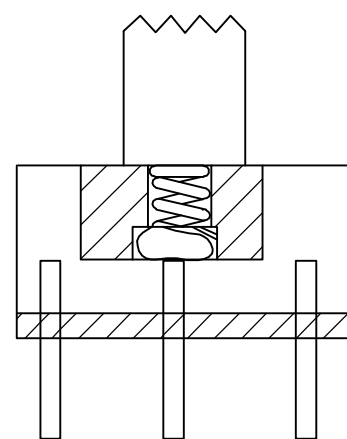
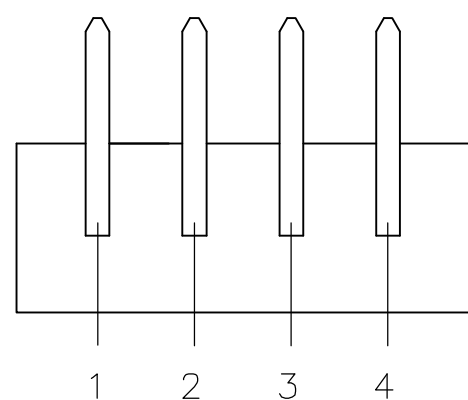
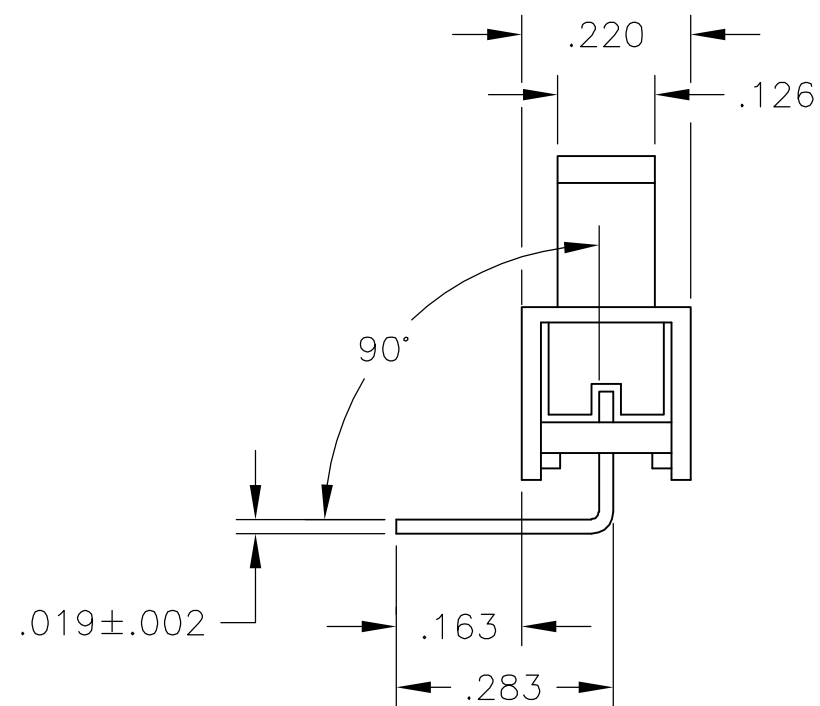
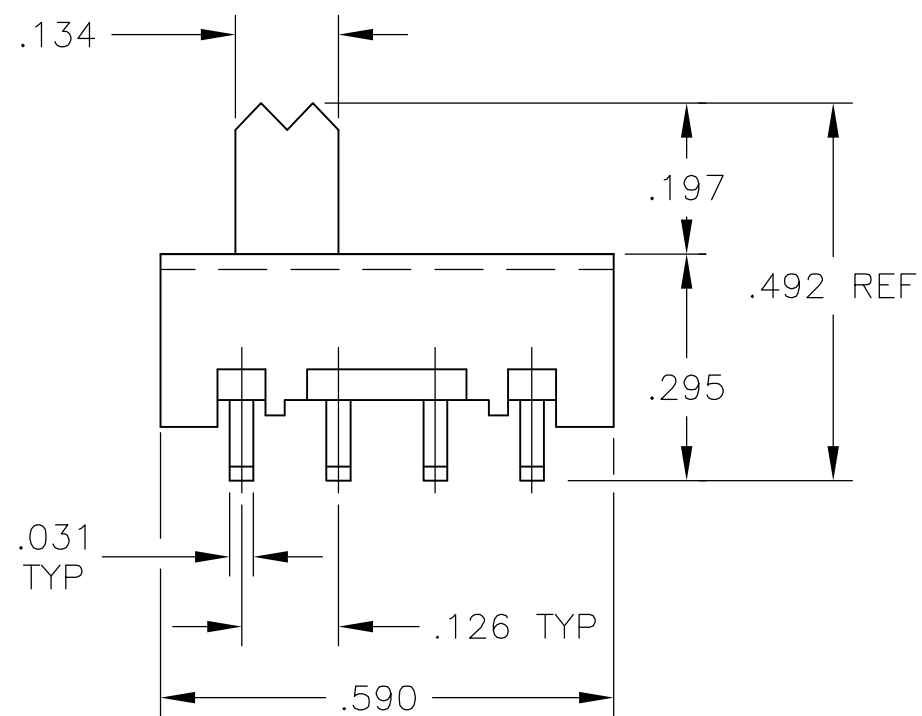
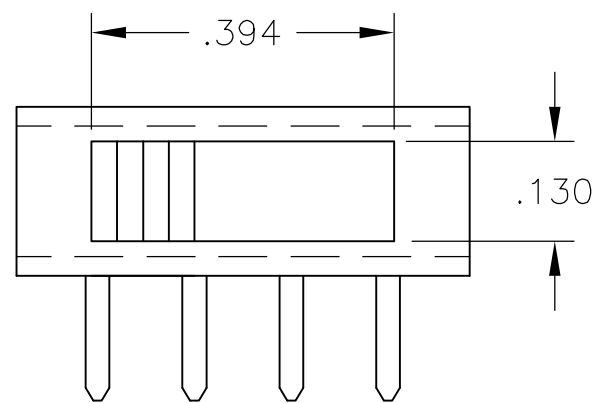


THIS DRAWING IS UNPUBLISHED. RELEASED FOR PUBLICATION  
 © COPYRIGHT BY TYCO ELECTRONICS CORPORATION. ALL RIGHTS RESERVED.

LOC	DIST	REVISIONS					
AD	00	P	LTR	DESCRIPTION	DATE	DWN	APVD
		A		ECO 05 006799	29APR06	BSV	SM



RECOMMENDED HOLE LAYOUT

SPECIFICATIONS:  
 BREAK BEFORE MAKE

**MATERIALS:**

FRAME: STEEL,ZINC PLATE  
 ACTUATOR: PBT,UL94HB,BLACK  
 TERMINAL/FIXED CONTACT: COPPER ALLOY, AG OVER NI  
 OR AU OVER NI PLATE.  
 MOVING CONTACT: COPPER ALLOY, AG OVER NI  
 OR AU OVER NI PLATE  
 TERMINAL BOARD: PHENOLIC, UL94HB  
 COIL SPRING: CARBON STEEL WIRE

**ELECTRICAL:**

CONTACT RATING, 250MILLIAMPS @ 125V AC,  
 150MILLIAMPS @ 12V DC  
 CONTACT RESISTANCE, 30 MILLIOHMS MAX (INITIAL),  
 60 MILLIOHMS AFTER TEST  
 INSULATION RESISTANCE: 500 MEGOHMS MIN.  
 DIELECTRIC STRENGTH: 500 VOLTS RMS @SEA LEVEL  
 LIFE EXPECTANCY: 10,000 CYCLES MIN. NO LOAD,  
 6,000 AT RATED CURRENT.

**MECHANICAL:**

ACTUATION FORCE, 250 +150/-100 GRAMS  
 TRAVEL, .126 (3.20)

**ENVIRONMENTAL:**

OPERATING TEMPERATURE: -10°C TO +85°C  
 STORAGE TEMPERATURE: -10°C TO +85°C  
 RESISTANCE TO SOLDER HEAT, 260°C FOR 10 SEC  
 PER 109-202, CONDITION B  
 SOLDERABILITY PER EIA-364-56A, PROCEDURE 3,  
 CONDITION B

NOTE:

1. ALL MATERIALS AND FINISHES SHALL COMPLY WITH EU DIRECTIVE 2002/95/EC OF 27 JAN2003 (ROHS)
2. ALL PERFORMANCE SPECIFICATIONS WERE TESTED IN ACCORDANCE WITH JIS-C-5441 UNLESS OTHERWISE STATED.

1-2	2-3	3-4	SLS131RA04	1825118-1
LEFT	MID	RIGHT	ALCO PART NO.	TYCO PART NO.
ACTUATOR POSITION				

THIS DRAWING IS A CONTROLLED DOCUMENT.		DWN B S VISWESWARA	02MAR05																						
DIMENSIONS: INCHES		CHK M S SARVER	Tyco Electronics Corporation Harrisburg, Pa 17105-3608																						
TOLERANCES UNLESS OTHERWISE SPECIFIED:		APVD -	NAME SLIDE SWITCH SP3T (SLS 131 RA)																						
<table border="0"> <tr><td>0 PLC</td><td>±</td><td>-</td></tr> <tr><td>1 PLC</td><td>±</td><td>-</td></tr> <tr><td>2 PLC</td><td>±</td><td>-</td></tr> <tr><td>3 PLC</td><td>±</td><td>.010</td></tr> <tr><td>4 PLC</td><td>±</td><td>-</td></tr> <tr><td>ANGLES</td><td>±</td><td>-</td></tr> <tr><td>FINISH</td><td></td><td></td></tr> </table>		0 PLC	±	-	1 PLC	±	-	2 PLC	±	-	3 PLC	±	.010	4 PLC	±	-	ANGLES	±	-	FINISH			PRODUCT SPEC -	SIZE A2	CAGE CODE 00779
0 PLC	±	-																							
1 PLC	±	-																							
2 PLC	±	-																							
3 PLC	±	.010																							
4 PLC	±	-																							
ANGLES	±	-																							
FINISH																									
MATERIAL SEE TABLE		APPLIC. SPEC -	DRAWING NO C=1825118	RESTRICTED TO -																					
		WEIGHT -	SCALE 4:1	SHEET 1 OF 1																					
		CUSTOMER DRAWING	REV A																						

1825118

A