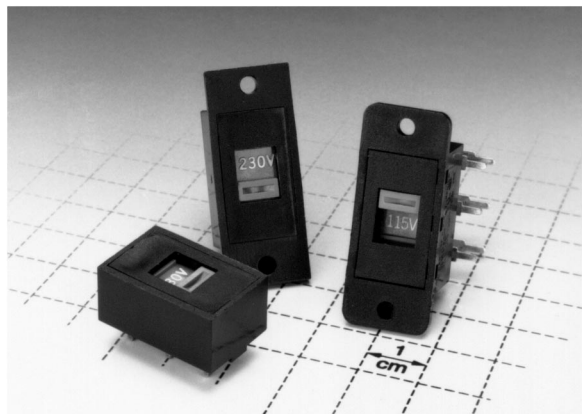


# C&K V Series Power & Line Voltage Select Slide Switches



## Features/Benefits

- Ratings up to 10 AMPS
- Snap-in panel and PC mounting
- Actuators with screwdriver slot
- Quick connect terminals available



## Typical Applications

- Appliances

## Build-A-Switch

Our easy Build-A-Switch concept allows you to mix and match options to create the switch you need. Below is a complete listing of options shown in catalog. To order, simply select desired option from each category and place in the appropriate box. Switches with standard options are shown on page E-37. Available options are shown and described on pages E-38 thru E-40. For additional options not shown in catalog, consult Customer Service Center.

Typical Example: **V 8 0 2** — **1 2** — **S S** — **0 5** — **Q** —

### Switch Function

- V802 (STD.) DPDT**
- V701** SPST
- V702** SPDT
- V801** DPST

### Actuator

- 12 (STD.)** Screwdriver slot
- 01** .157" high
- 02** .157" high
- 13** Screwdriver slot
- 14** Screwdriver slot

### Mounting Style

- SS (STD.)** Panel with mounting ears
- MA** Right angle, PC thru-hole
- MS** PC Thru-hole
- S2** Snap-in panel
- SL** Right angle, panel with mounting ears

### Terminations

- 05 (STD.)** Quick connect
- 02** PC thru-hole
- 04** PC thru-hole
- 08** Right angle PC thru-hole

### Contact Material

- Q (STD.)** Silver

### Seal

- NONE (STD.)** No seal
- E** Epoxy seal



Slide

# C&K V Series Power & Line Voltage Select Slide Switches

## Specifications

CONTACT RATING: 10.1 AMPS @ 125 V AC; 4 AMPS @ 28 V DC;  
5 AMPS @ 250 V AC (UL/CSA). 2.0 (0.5) AMPS @ 250 V AC,  
T85 (VDE).

ELECTRICAL LIFE: 10,000 make-and-break cycles at full load.

CONTACT RESISTANCE: Below 10 milliohms typ. initial  
@ 2-4 V DC, 100 mA.

INSULATION RESISTANCE: 10<sup>9</sup> ohms min.

DIELECTRIC STRENGTH: 1,000 V RMS min. @ sea level.

## Materials

HOUSING: 6/6 nylon (UL94V-2), black.

TOP PLATE: 6/6 nylon (UL94V-2), black.

ACTUATOR: Glass filled polyester (UL94V-0), '01 and '02' styles,  
black (standard); '12, 13 and 14' styles, red (standard).

CONTACTS: Copper, silver plated.

TERMINALS: Copper, silver plated.

CONTACT SPRING: Music wire or stainless steel.

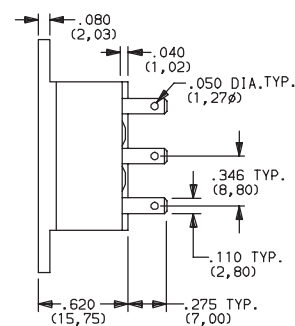
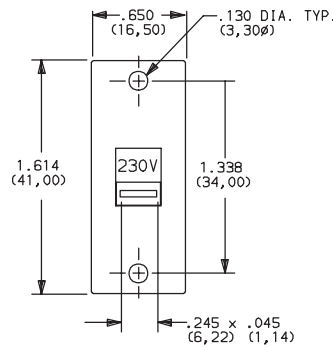
TERMINAL SEAL: Epoxy.

**NOTE:** Specifications and materials listed above are for switches with standard options.  
For information on specific and custom switches, consult Customer Service Center.

## SWITCHES WITH STANDARD OPTIONS

PART NUMBER	NO. POLES	TERMINATION
V80212SS05Q	DPDT	Quick connect

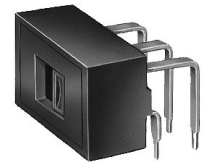
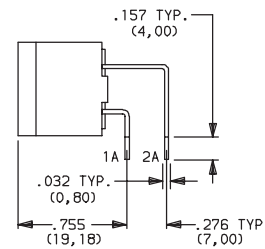
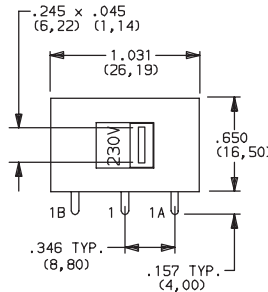
**NOTE:** For panel mounting information, see page E-38.



V80212SS05Q  
DPDT

PART NUMBER	NO. POLES	TERMINATION
V80212MA08Q	DPDT	Right angle PC thru-hole

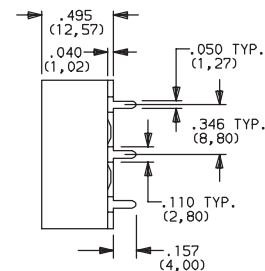
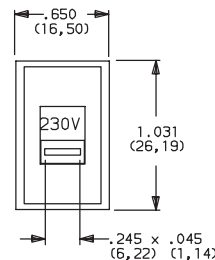
**NOTE:** For PC mounting information, see page E-40.



V80212MA08Q  
Horizontal Actuation  
DPDT

PART NUMBER	NO. POLES	TERMINATION
V80212MS02Q	DPDT	PC thru-hole

**NOTE:** For panel mounting information, see page E-40.



V80212MS02Q  
DPDT

# C&K V Series Power & Line Voltage Select Slide Switches

## SWITCH FUNCTION

NO. POLES	MODEL NO.	SWITCH FUNCTION	SCHEMATIC	AVAILABLE MOUNTING STYLES
SP	V701	SPST		ALL
	V702	SPDT		ALL

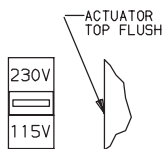
All models with all options.

Contacts make on side actuator thrown.

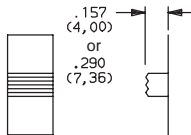
NO. POLES	MODEL NO.	SWITCH FUNCTION	SCHEMATIC	AVAILABLE MOUNTING STYLES
DP	V801	DPST		ALL
	V802 (STD.)	DPDT		ALL

## ACTUATOR

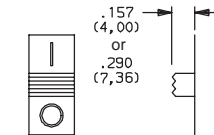
**12 (STD.) SCREWDRIVER SLOT**    **01** .157" HIGH    **02** .157" HIGH    **13** SCREWDRIVER SLOT    **14** SCREWDRIVER SLOT



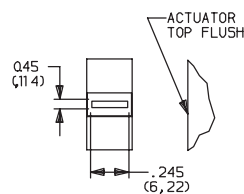
Actuator color is red with white 115V-230V markings (std.).



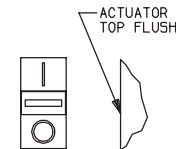
Actuator color is black.



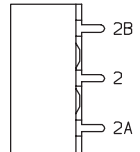
markings are reversed on V702 and V802 models. Actuator color is black with white markings (std.).



Markings are reversed on V702 and V802 models. Actuator color is red.



Actuator color is red with white markings (std.).



**Note:** Orientation of actuator markings and terminals.

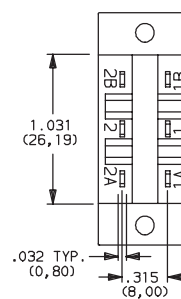
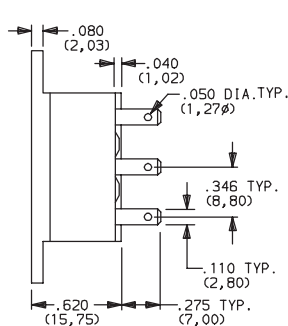
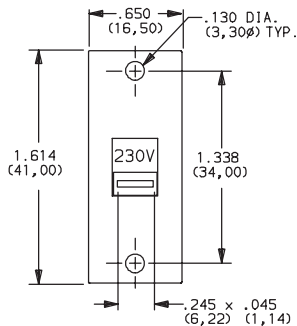
## MOUNTING STYLE

**SS (STD.) PANEL WITH MOUNTING EARS**

### PANEL MOUNTING

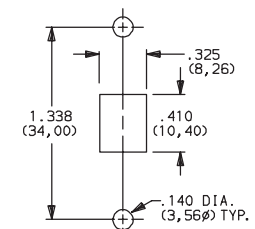


V80212SS05Q  
DPDT

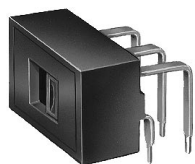


**AVAILABLE WITH:**

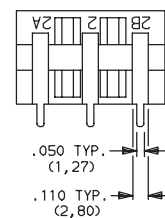
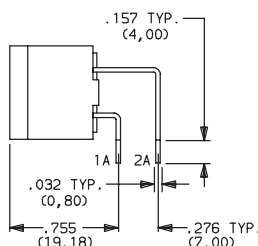
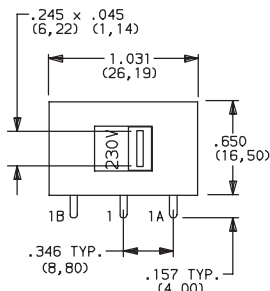
**Models:** All.  
**Terminations:** 02, 04, and 05



**MA RIGHT ANGLE, PC THRU-HOLE**



V80212MA08Q  
Horizontal Actuation  
DPDT



**AVAILABLE WITH:**

**Models:** All  
**Terminations:** 08

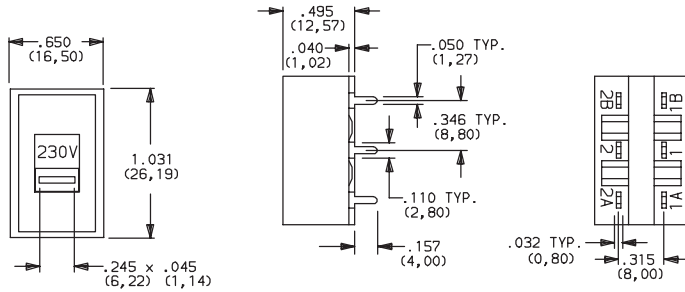
### PC MOUNTING

PC mount, side actuated. For mounting information, see TERMINATIONS section, page E-40.

# C&K V Series Power & Line Voltage Select Slide Switches

## MOUNTING STYLE

### MS PC THRU-HOLE



#### AVAILABLE WITH:

Models: All  
Terminations: 02 and 04

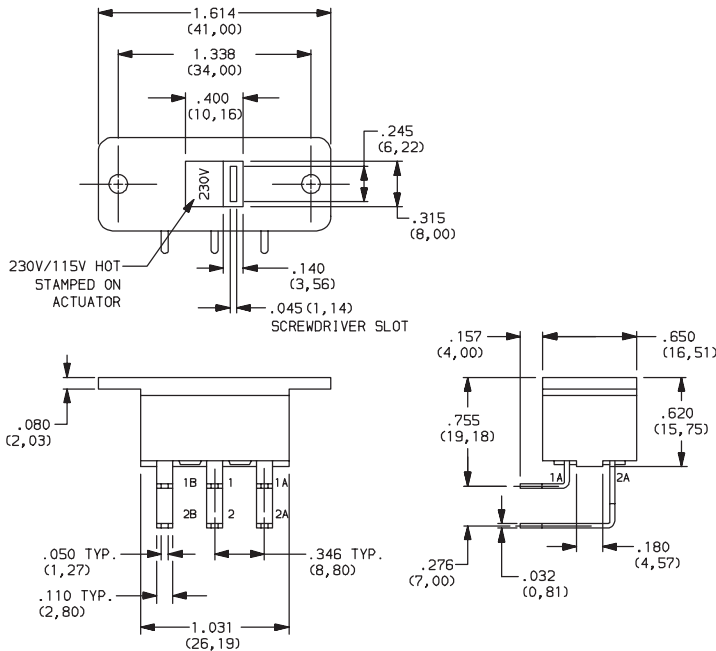
#### PC MOUNTING

PC mount, top actuated.  
For mounting information,  
see TERMINATIONS section, page E-40.

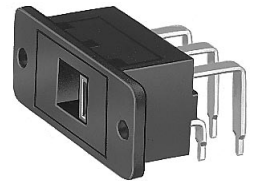
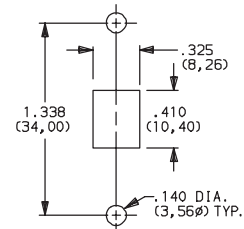


V80212MS02Q  
DPDT

### SL RIGHT ANGLE PANEL WITH MOUNTING EARS



#### PANEL MOUNTING

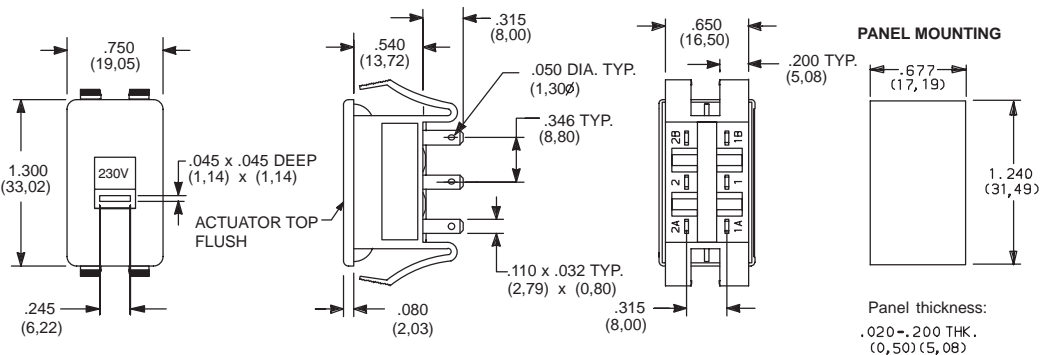


V80213SL08Q  
Horizontal Actuation  
DPDT

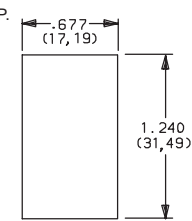
#### AVAILABLE WITH:

Models: All  
Terminations: 08

### S2 SNAP-IN PANEL



#### PANEL MOUNTING



Panel thickness:  
.020-.200 THK.  
(0,50) (5,08)



V20212S205Q  
DPDT

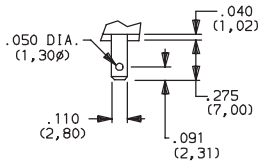
#### AVAILABLE WITH:

Models: All  
Terminations: 02, 04 and 05

# C&K V Series Power & Line Voltage Select Slide Switches

## TERMINATIONS

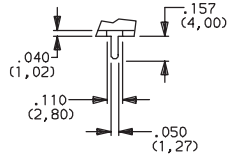
### 05 (STD.) QUICK CONNECT



.032 THK.  
(0,80)

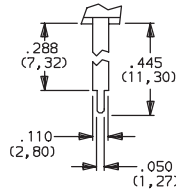
Fits .110 in. quick connector.

### 02 PC THRU-HOLE



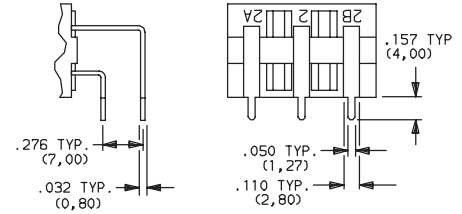
.032 THK.  
(0,80)

### 04 PC THRU-HOLE



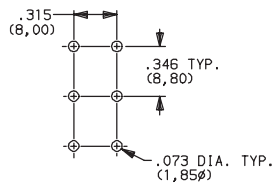
.032 THK.  
(0,80)

### 08 PC THRU-HOLE



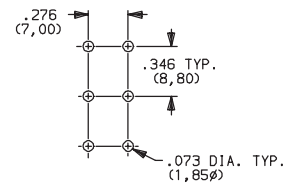
Not available with 'MS, SS or S2' mounting styles.

#### PC MOUNTING



MS, SS Mounting Styles.

#### PC MOUNTING





MA, SL Mounting Styles.

## CONTACT MATERIAL

OPTION CODE	CONTACT AND TERMINAL MATERIAL	RATINGS	
Q (STD.)	SILVER <sup>1</sup>	POWER	10.1 AMPS @ 125 V AC; 4 AMPS @ 28 V DC; 5 AMPS @ 250 V AC (UL/CSA); 2.0 (0.5) AMPS @ 250 V AC, T85 (VDE).

CONTACT MATERIAL/APPLICATION RECOMMENDATIONS — SEE CHART, PAGE L-31.

<sup>1</sup> CONTACTS & TERMINALS: Copper, silver plated (standard with all termination options).

All models  with all options. V70X and V80X models .



E

Slide

## SEAL

### NONE (STD.) NO SEAL

### E EPOXY SEAL

