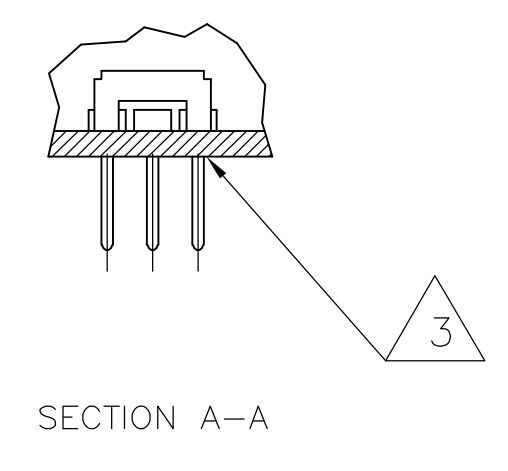


RECOMMENDED BOARD LAYOUT



SPECIFICATIONS  
 MAKE-BEFORE-BREAK

MATERIALS:  
 ACTUATOR- POM, UL94HB BLACK  
 TERMINAL BOARD- PHENOLIC LAMINATED SHEET, UL94HB, NATURAL  
 FRAME- STEEL, NICKEL PLATE  
 TERMINAL/FIXED CONTACT- COPPER ALLOY, GOLD OR SILVER OVER NICKEL PLATE  
 MOVING CONTACT- COPPER ALLOY, GOLD OR SILVER OVER NICKEL PLATE  
 DETENT BALL- STEEL  
 COIL SPRING- GALVANIZED SPRING WIRE  
 SEAL- EPOXY

ELECTRICAL:  
 CONTACT RATING- .4VA@20VDC OR PEAK AC (GOLD); 300mA@125V AC (SILVER)  
 INITIAL CONTACT RESISTANCE- 30 milliohm max.  
 FINAL CONTACT RESISTANCE- 100 milliohm max. (AFTER TEST)  
 INSULATION RESISTANCE- 1,000 Megohms min.  
 DIELECTRIC STRENGTH- 500V RMS@SEA LEVEL  
 LIFE EXPECTANCY- 15,000 CYCLES MIN.

MECHANICAL:  
 ACTUATION FORCE- 600+/-300 GRAMS  
 TRAVEL- 2.0 +/- .50 (.079 +/- .020)

ENVIRONMENTAL:  
 OPERATING TEMPERATURE- -20 TO +85 DEGREES C  
 STORAGE TEMPERATURE- -40 TO +100 DEGREES C  
 RESISTANCE TO SOLDER HEAT PER 109-202, CONDITION B  
 SOLDERABILITY PER EIA-364-52, CLASS 2, CATEGORY 1, 95% MIN COVERAGE

NOTES:

- MARK PER 202-37 SPECIFICATION, *tyco* /CHINA MINIMUM REQUIREMENT
- ALL MATERIALS AND FINISHES SHALL COMPLY WITH EU DIRECTIVE 2002/95/EC OF 27JAN2003 (ROHS)
- ANTI SOLDER WICK SEAL AT TERMINAL TO BOARD INTERFACE
- ALL PERFORMANCE TESTING WAS DONE IN ACCORDANCE TO TYCO SPECIFICATION 102-2469

1571423-2	MSS-140004	SILVER	3 TO 1	3 TO 2	3 TO 4	3 TO 5
1571423-1	MSS-1400G04	GOLD	3 TO 1	3 TO 2	3 TO 4	3 TO 5
TYCO PART NO.	T&B PART NO.	PLATING				

THIS DRAWING IS A CONTROLLED DOCUMENT.

DWNS	FR BROWN	20DEC05	<b>tyco</b> Electronics	Tyco Electronics Corporation Harrisburg, Pa 17105-3608	
CHK	M SARVER	20DEC05		NAME	
APRD	M SARVER	20DEC05	PRODUCT SPEC	SLIDE SWITCH, MS 1400 SERIES, SP-4T	
APPROV			APPLICATION SPEC	SIZE	CAGE CODE
MATERIAL			WEIGHT	A1	00779
CUSTOMER DRAWING			SCALE	3:1	SHEET 1 OF 1

RESTRICTED TO

TERMINALS CONNECTED WHEN SLIDE IS IN POSITION SHOWN.