

THIS DRAWING IS UNPUBLISHED. RELEASED FOR PUBLICATION 1571005, 1571005  
 © COPYRIGHT 1571005 BY TYCO ELECTRONICS CORPORATION. ALL RIGHTS RESERVED.


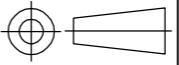
LOC	DIST	REVISIONS			
P	LTR	DESCRIPTION	DATE	DWN	APVD
AD	00	SEE SHEET 1	-	-	-

1. OPERATING TEMPERATURE: -20°C TO 80°C.
2. STORAGE TEMPERATURE: -40°C TO 80°C.
3. CONTACT TIMING: NON-SHORTING.
4. CONTACT RATING: 0.4VA @ 20VDC.
5. CONTACT RATING MAXIMUM: 50mA 48V AC/DC.
6. CONTACT RATING MINIMUM: 1µA 20mV AC/DC.
7. GOLD PLATE OVER SILVER.
8. TIN-LEAD OVER SILVER.
9. TIN OVER NICKEL.
10. INITIAL CONTACT RESISTANCE: LESS THAN 50 MILLIOHMS PER EIA 364-23B.
11. FINAL CONTACT RESISTANCE: 100 MILLIOHMS MAX PER EIA 364-23B.
12. INSULATION RESISTANCE: 500 MEGOHMS MIN AT 250VDC PER EIA 364-21C.
13. DIELECTRIC STRENGTH: 500VAC BETWEEN TERMINALS AND GROUND PER EIA 364-20B, CONDITION 1.
14. VIBRATION PER EIA 364-28D, CONDITION VII, LEVEL E.
15. MECHANICAL SHOCK PER EIA 364-27B, CONDITION A.
16. LIFE EXPECTANCY: ON-OFF ELECTRICAL SWITCHING OPERATIONS PER EIA 364-9C 10 CYCLES PER MINUTE AT THE FOLLOWING RATED LOAD.

TYPE	MAXIMUM CONTACT RATING	0.4 VA	MINIMUM CONTACT RATING
D.E	10000 (OPERATIONS)	30000 (OPERATIONS)	30000 (OPERATIONS)

17. ACTUATION FORCE: 70-500g PER EIA 364-13B.
18. THERMAL SHOCK PER EIA 364-32C, -25°C TO 85°C.
19. HUMIDITY-TEMPERATURE CYCLING PER EIA 364-31B, METHOD III.
20. TEMPERATURE LIFE PER EIA 364-17B, METHOD B, TEMPERATURE TEST CONDITION 3, TIME CONDITION B.
21. RESISTANCE TO SOLDERING HEAT PER 109-202, TEST CONDITION B.
22. SOLDERABILITY PER EIA 364-52, CLASS 2, CATEGORY 1.
23. MARK PER 202-37, "tyco CHINA" MINIMUM REQUIREMENT.
24. ALL MATERIALS AND FINISHES SHALL COMPLY WITH EU DIRECTIVE 2002/95/EC OF 27JAN2003 (ROHS)

SEE SHEET 2 FOR PART NUMBER TABLES  
 SEE SHEET 3 FOR DIMENSIONS

THIS DRAWING IS A CONTROLLED DOCUMENT.		DWN R BROWN 16AUG06	 Tyco Electronics Corporation Harrisburg, Pa 17105-3608	
DIMENSIONS: mm		CHK H WYNKOOP 11DEC01	NAME SWITCH, SLIDE S(**)GPC	
		APVD H WYNKOOP 11DEC01	DRAWING NO C=1571005	
TOLERANCES UNLESS OTHERWISE SPECIFIED:		PRODUCT SPEC	RESTRICTED TO	
0 PLC ± -		APPLICATION SPEC	SIZE A2	
1 PLC ± -		WEIGHT	CAGE CODE -	
2 PLC ± 0.25		FINISH	SCALE 1:1	
3 PLC ± -		SEE NOTES	SHEET 1 OF 3	
4 PLC ± -		SEE TABLE	REV G	
ANGLES ± 0°30'		CUSTOMER DRAWING		

1571005

THIS DRAWING IS UNPUBLISHED. RELEASED FOR PUBLICATION 1571005, 1571005  
 © COPYRIGHT 1571005 BY TYCO ELECTRONICS CORPORATION. ALL RIGHTS RESERVED.

LOC	DIST	REVISIONS			
P	LTR	DESCRIPTION	DATE	DWN	APVD
AD	00	SEE SHEET 1	-	-	-

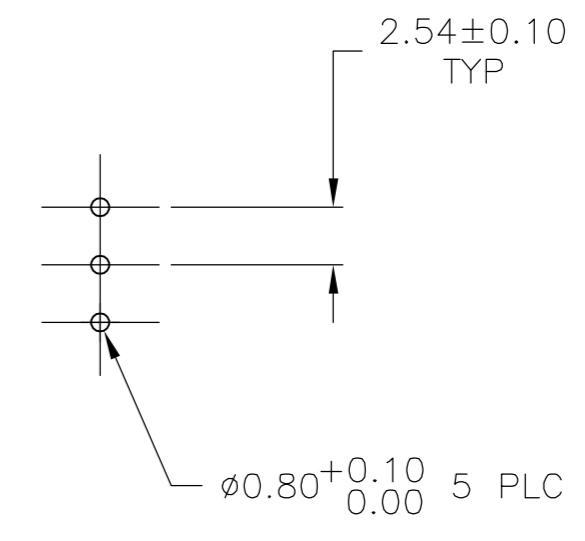
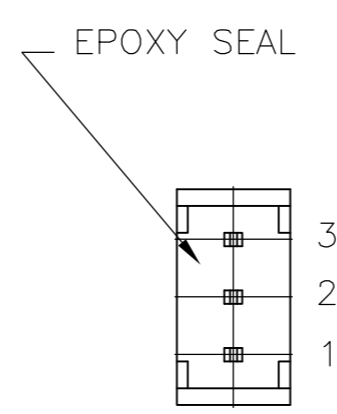
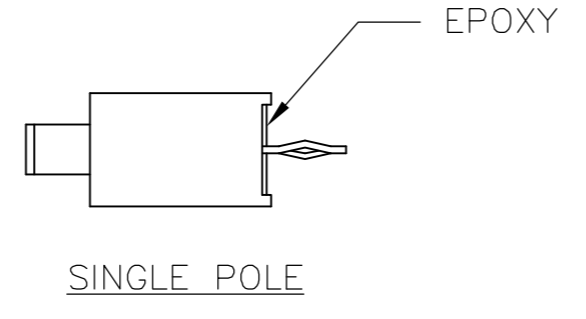
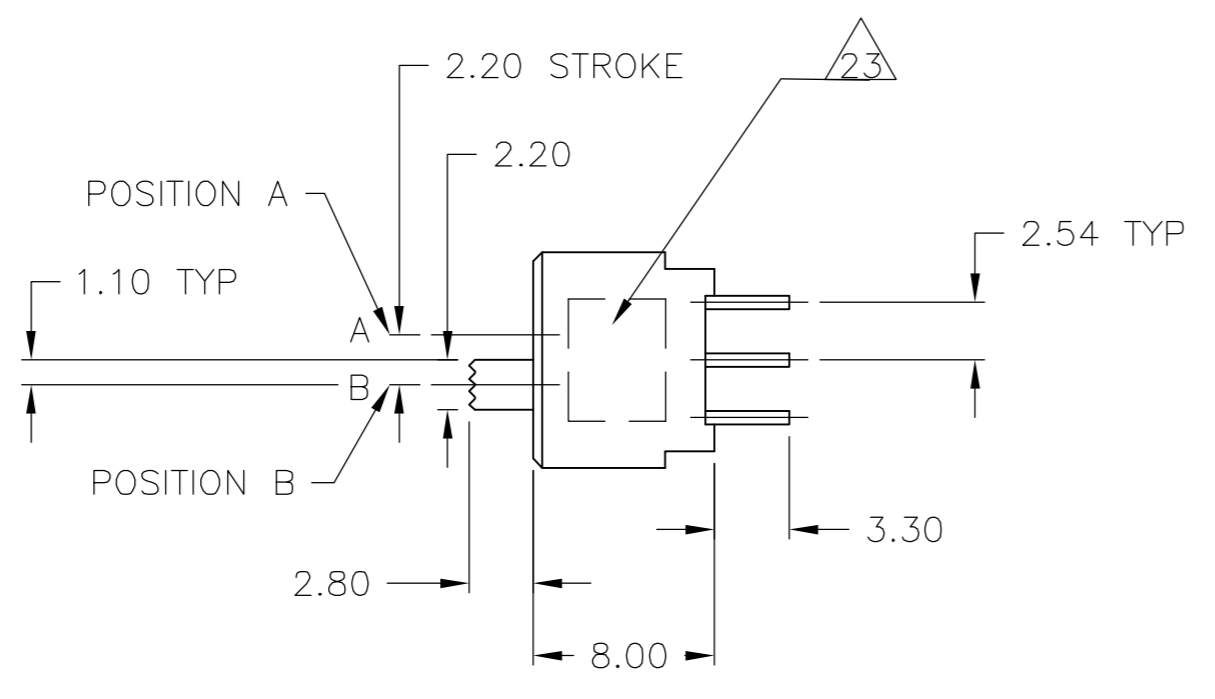
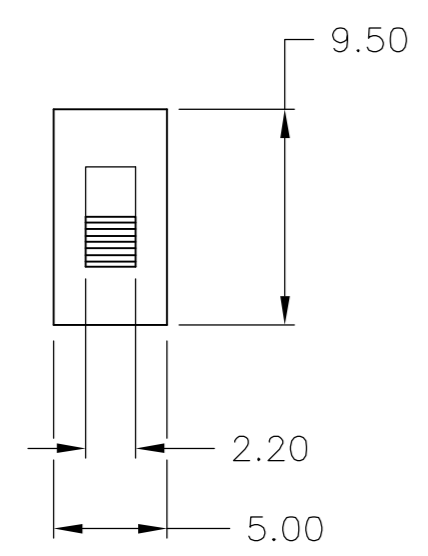
COLOR-WHITE	PET FILM UL94-HB	SLIDE PLATE
COLOR-BLACK	PA46 UL94V-0 30% GLASS FILLED	TERMINAL BOARD
-	STAINLESS STEEL	COIL SPRING
COLOR-WHITE	PA46 UL94V-0 30% GLASS FILLED	PLUNGER
-	EPOXY	TERMINAL SEAL
7	PHOSPHOR BRONZE	MOVABLE CONTACT
7	PHOSPHOR BRONZE	FIXED CONTACT
7	PHOSPHOR BRONZE	TERMINAL -51 THRU -54
8	PHOSPHOR BRONZE	TERMINAL -1 THRU -4
COLOR-YELLOW	PA46 UL94V-0 30% GLASS FILLED	ACTUATOR
9	BRASS	FRAME
COLOR-GRAY	PA46 UL94V-0 30% GLASS FILLED	CASE
FINISH	MATERIAL	PART DESCRIPTION

24	ON 2-3 5-6	OFF	ON 2-1 5-4	DP3T	S2EGPC04	5-1571005-4
24	ON 2-3 5-6	NONE	ON 2-1 5-4	DPDT	S2DGPC04	5-1571005-3
24	ON 2-3	OFF	ON 2-1	SP3T	S1EGPC04	5-1571005-2
24	ON 2-3	NONE	ON 2-1	SPDT	S1DGPC04	5-1571005-1
SUPERCEDED BY 5-1571005-4	ON 2-3 5-6	OFF	ON 2-1 5-4	DP3T	S2EGPC	1571005-4
SUPERCEDED BY 5-1571005-3	ON 2-3 5-6	NONE	ON 2-1 5-4	DPDT	S2DGPC	1571005-3
SUPERCEDED BY 5-1571005-2	ON 2-3	OFF	ON 2-1	SP3T	S1EGPC	1571005-2
SUPERCEDED BY 5-1571005-1	ON 2-3	NONE	ON 2-1	SPDT	S1DGPC	1571005-1
	POSITION A		POSITION B	FUNCTION	ALCOSWITCH PART NUMBER	TYCO PART NUMBER
	CIRCUIT ARRANGEMENT					
	CIRCUIT CHARACTERISTICS					

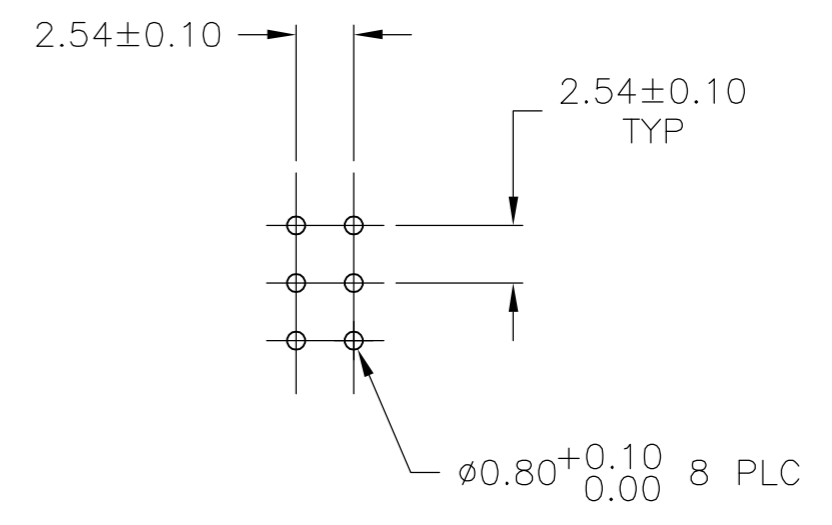
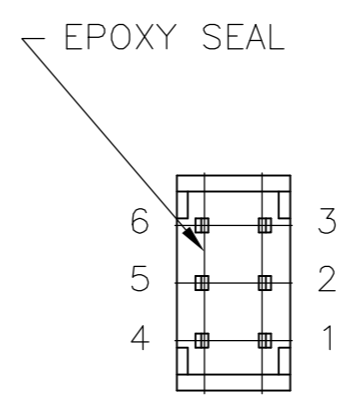
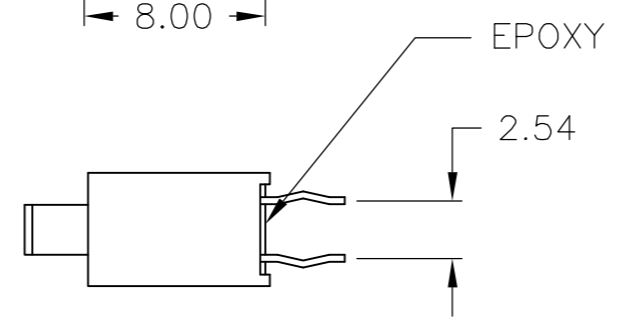
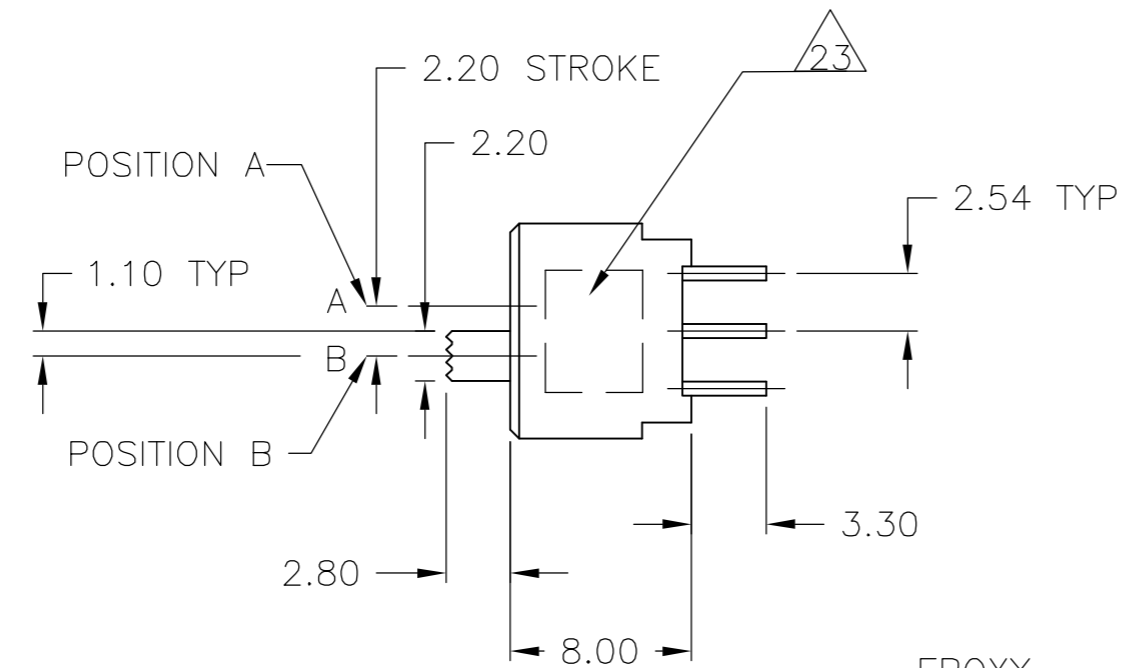
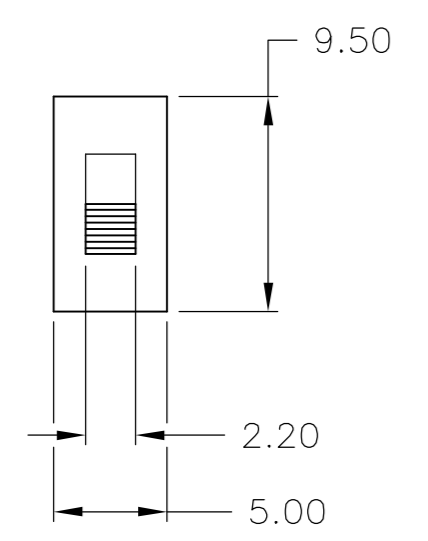
THIS DRAWING IS A CONTROLLED DOCUMENT.		DWN R BROWN 16AUG06	<b>tyco</b> Tyco Electronics Corporation	
DIMENSIONS: mm		CHK H WYNKOOP 11DEC01	Harrisburg, Pa 17105-3608	
TOLERANCES UNLESS OTHERWISE SPECIFIED:		APVD H WYNKOOP 11DEC01	NAME SWITCH, SLIDE S(**)GPC	
0 PLC ± -		PRODUCT SPEC -	SIZE A2	CAGE CODE -
1 PLC ± -		APPLICATION SPEC -	DRAWING NO C=1571005	RESTRICTED TO -
2 PLC ± 0.25		WEIGHT -	SCALE 1:1	SHEET 2 OF 3
3 PLC ± -		CUSTOMER DRAWING	REV G	
4 PLC ± -				
ANGLES ± 0°30'				
MATERIAL SEE SHEET 2	FINISH SEE SHEET 2			

THIS DRAWING IS UNPUBLISHED. RELEASED FOR PUBLICATION 1571005, 1571005  
 © COPYRIGHT 1571005 BY TYCO ELECTRONICS CORPORATION. ALL RIGHTS RESERVED.

Loc	DIST	REVISIONS			
P	LTR	DESCRIPTION	DATE	DWN	APVD
AD	00	G	ECO-06-007730	16AUG06	BSV MS



RECOMENDED P.C. HOLE LAYOUT  
SINGLE POLE



RECOMENDED P.C. HOLE LAYOUT  
DOUBLE POLE

THIS DRAWING IS A CONTROLLED DOCUMENT.		DWN R BROWN 11DEC01	Tyco Electronics Corporation Harrisburg, Pa 17105-3608	
DIMENSIONS: mm		CHK H WYNKOOP 11DEC01		
TOLERANCES UNLESS OTHERWISE SPECIFIED:		APVD H WYNKOOP 11DEC01	NAME SWITCH, SLIDE S(**)GPC	
0 PLC ± - 1 PLC ± - 2 PLC ± 0.25 3 PLC ± - 4 PLC ± - ANGLES ± 0°30'		PRODUCT SPEC -	SIZE A2	CAGE CODE -
MATERIAL SEE SHHET 2	FINISH SEE SHEET2	APPLICATION SPEC -	DRAWING NO C=1571005	RESTRICTED TO -
CUSTOMER DRAWING		WEIGHT -	SCALE 3:1	SHEET 3 OF 3
			REV G	

1571005