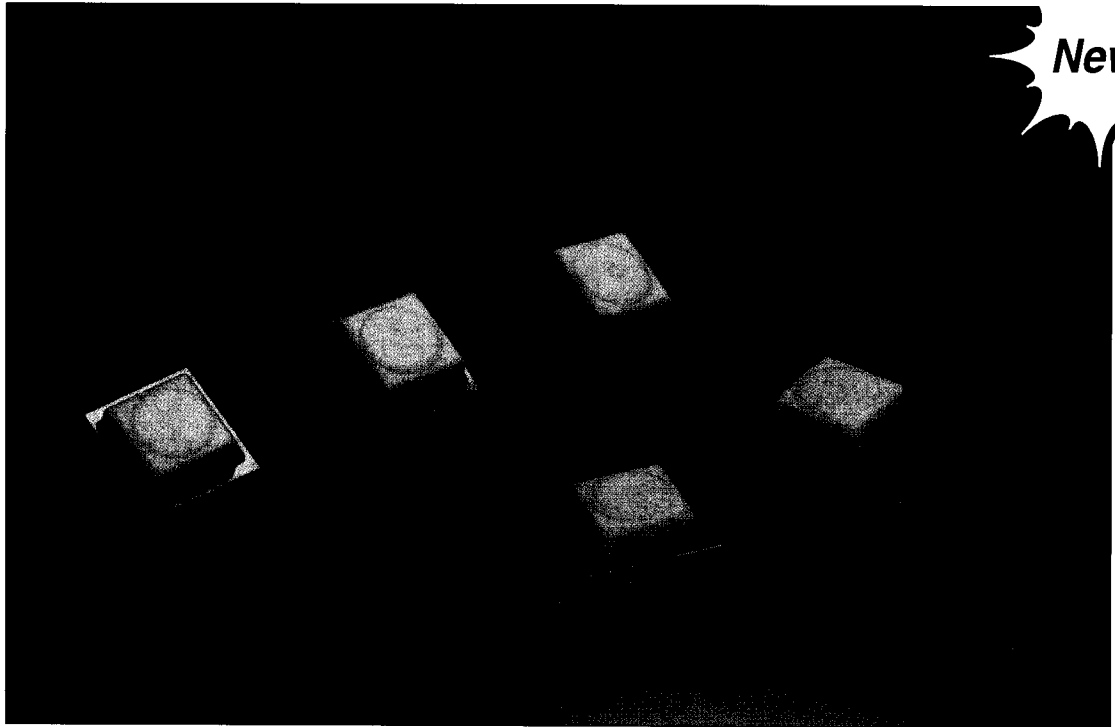


# **C&K** RT Series Tactile Pushbutton Switches

**New!**

*The ideal switch  
for a variety of  
applications!*



C&K's new RT Series Tactile Pushbutton Switches feature a silicone rubber dome with an extended mechanical travel that is five times greater than the traditional metal dome tactile switches. Constructed of high temperature thermoplastic materials, these miniature tactiles are process compatible and capable of withstanding infra-red soldering processes. The RT Series is available in thru-hole and surface mount packages with an actuation force of 120 or 300 grams.

## **Features**

- Low cost
- Long mechanical travel
- High temperature plastics
- Tape and reel packaging

## **Applications**

- Computers and peripherals
- Telecommunications equipment
- Cell and cordless phones
- 2-way radios

If your design requires a high quality, low cost tactile switch, delivered within your time frame, C&K has the solution. For additional information, free samples and our latest catalog, call today. Or make your request online at [www.ckcorp.com](http://www.ckcorp.com).

**Tel: (800) 635-5936**  
**Fax: (617) 926-6846**  
**Web Site: [www.ckcorp.com](http://www.ckcorp.com)**

**C&K**® C&K Components, Inc.  
57 Stanley Avenue  
Watertown, MA 02472-4802  
**The Primary Source Worldwide**®



The Primary Source Worldwide

# RT Series Tactile Pushbutton Switches

## SPECIFICATIONS

CONTACT RATING: 5mA max. @ 12 V DC.  
50µA min. @ 2 V DC.

ELECTRICAL & MECHANICAL LIFE:  
50,000 cycles.

CONTACT RESISTANCE: 1KΩ max. initial.

INSULATION RESISTANCE: 100MΩ min.

DIELECTRIC STRENGTH: 250 V AC.

OPERATING TEMPERATURE: -30°C to 80°C.

PACKAGING: Surface mount models, tape & reel,  
1,000 switches per reel.  
Thru-hole models, bulk packaging.

## MATERIALS

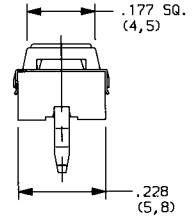
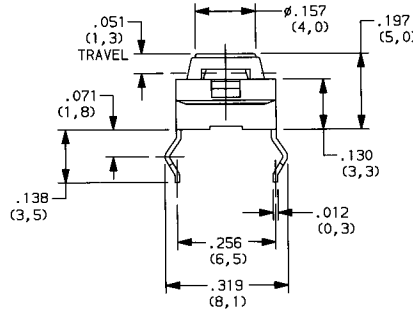
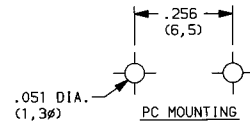
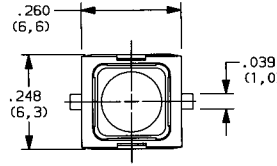
BASE: LCP.

COVER: Stainless steel.

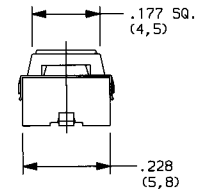
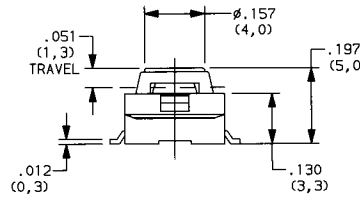
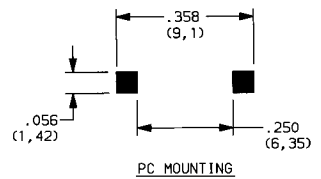
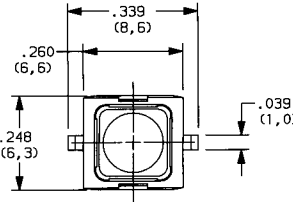
ACTUATOR: LCP.

DOMES: Silicone rubber.

TERMINALS: Brass.

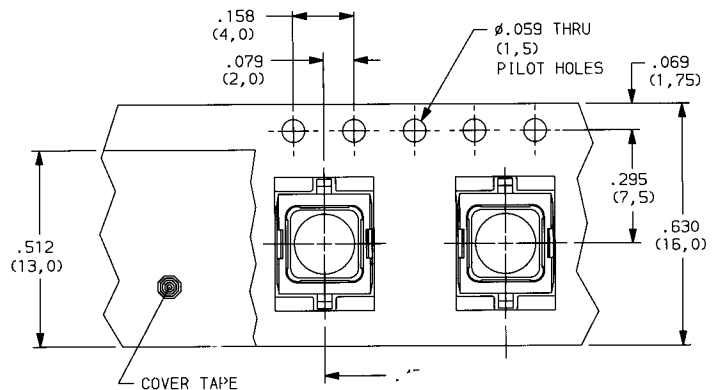


PART NUMBER	ACTUATOR FORCE (grams)	PACKAGING
RT11P2BCHD1	120	Bulk
RT11P2ECHD1	300	Bulk



PART NUMBER	ACTUATOR FORCE (grams)	PACKAGING
RT11P2BSHD1R	120	Tape & Reel
RT11P2ESHD1R	300	Tape & Reel
RT11P2BSHD1	120	Bulk
RT11P2ESHD1	300	Bulk

## TAPE & REEL PACKAGING



Components, Inc.

57 Stanley Avenue  
Watertown, MA 02472-4802

For additional information and a free copy of our latest catalog, call:

Tel: (800) 635-5936

Fax: (617) 926-6846

Website: [www.ckcorp.com](http://www.ckcorp.com)