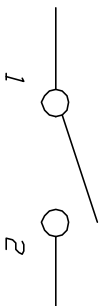
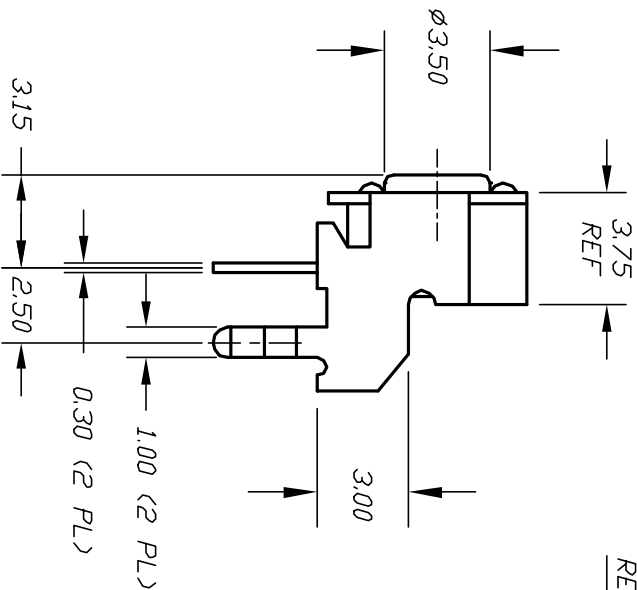
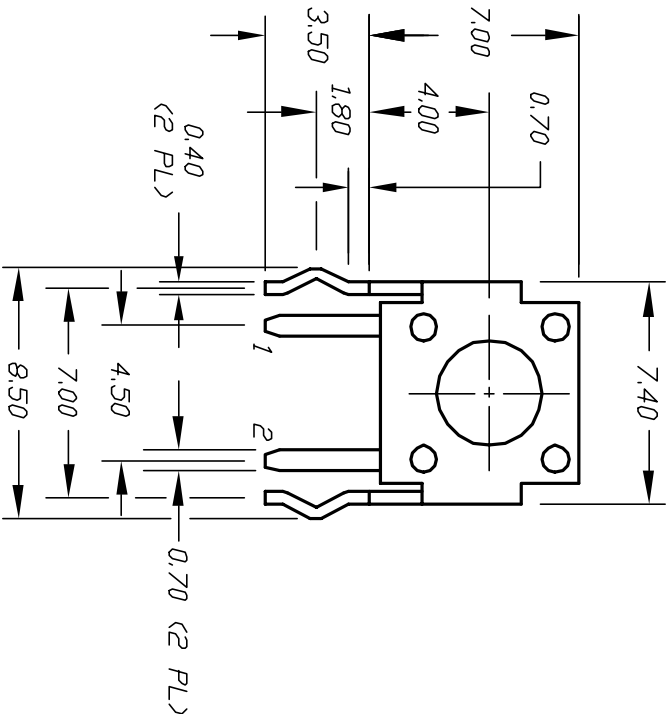


RECOMMENDED PCB LAYOUT



CIRCUIT: SPST

NOTES:

1. ALL DIMENSIONS IN MM
2. GENERAL TOLERANCE: 0.00=±0.25
3. TERM. NOS. FOR REF. ONLY
4. RATING: 50mA @12V DC
5. TRAVEL: 0.25±0.1mm
6. CONTACT RESISTANCE: 100 ohms max.
7. MATERIAL: STEM & BODY: PPS

REV.	ECN NO.	DESCRIPTION	DATE	CHK'D
A	10969	RELEASED FOR PRODUCTION	9/21/00	GLG

TITLE	SCALE	DATE	DR	DWG	REV
TL 1105 W F250 Q (STD BRKT)	4:1	9/21/00	GLG	P021219	A

E-SWITCH®

THE INFORMATION CONTAINED IN THIS DOCUMENT IS PROPRIETARY TO E-SWITCH AND IS NOT TO BE COPIED OR TRANSMITTED