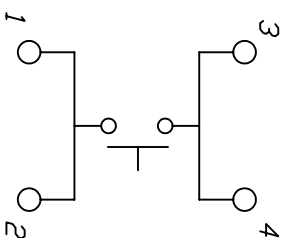
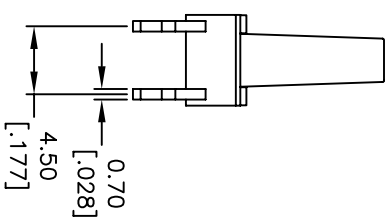
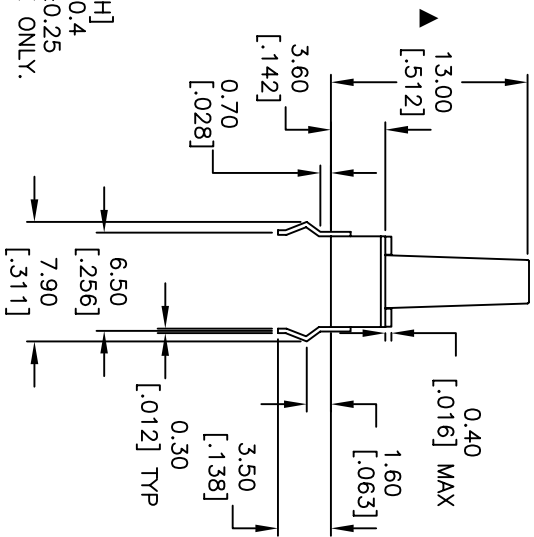


RECOMMEND PCB LAYOUT



CIRCUIT: SPST  
CONTACT CONFIGURATION

- NOTES:
1. ALL DIMENSIONS IN MM [INCH]
  2. GENERAL TOLERANCE: X.X=±0.4  
X.XX=±0.25
  3. TERM. NOS. FOR REFERENCE ONLY.
  4. RATINGS: 12VDC, 50mA
  5. OPERATING FORCE: 160±50gf
  6. TRAVEL: 0.25±0.1mm
  7. CONTACT RESISTANCE: 100 MILLI-OHMS Max.
  8. DIELECTRIC STRENGTH: 250V RMS min.
  9. INSULATION RESISTANCE: 1000 Mega-OHMS min.
  10. ELECTRICAL LIFE: 100,000 CYCLES min.
  11. ▲ DENOTES CRITICAL PARAMETER

C		14528	UPDATE STANDARDS & TITLE	11/19/04	AR	TITLE		TL1105DF160Q CUSTOM TAPER
REV.	ECN No.	DESCRIPTION		DATE	CHKD	SCALE	DATE	DR
						2:1	11/19/04	AR
						DWG	P010005	REV
								C

**E-SWITCH®**

THE INFORMATION CONTAINED IN THIS DOCUMENT IS PROPRIETARY TO E-SWITCH AND IS NOT TO BE COPIED OR TRANSFERRED