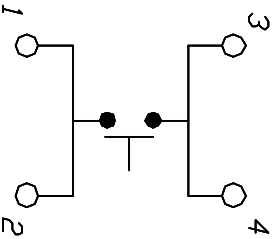
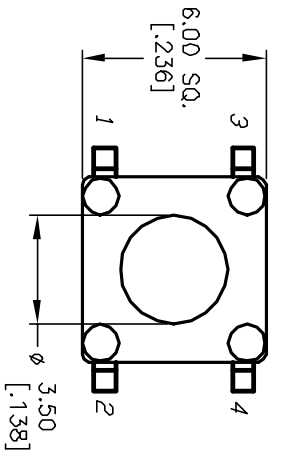
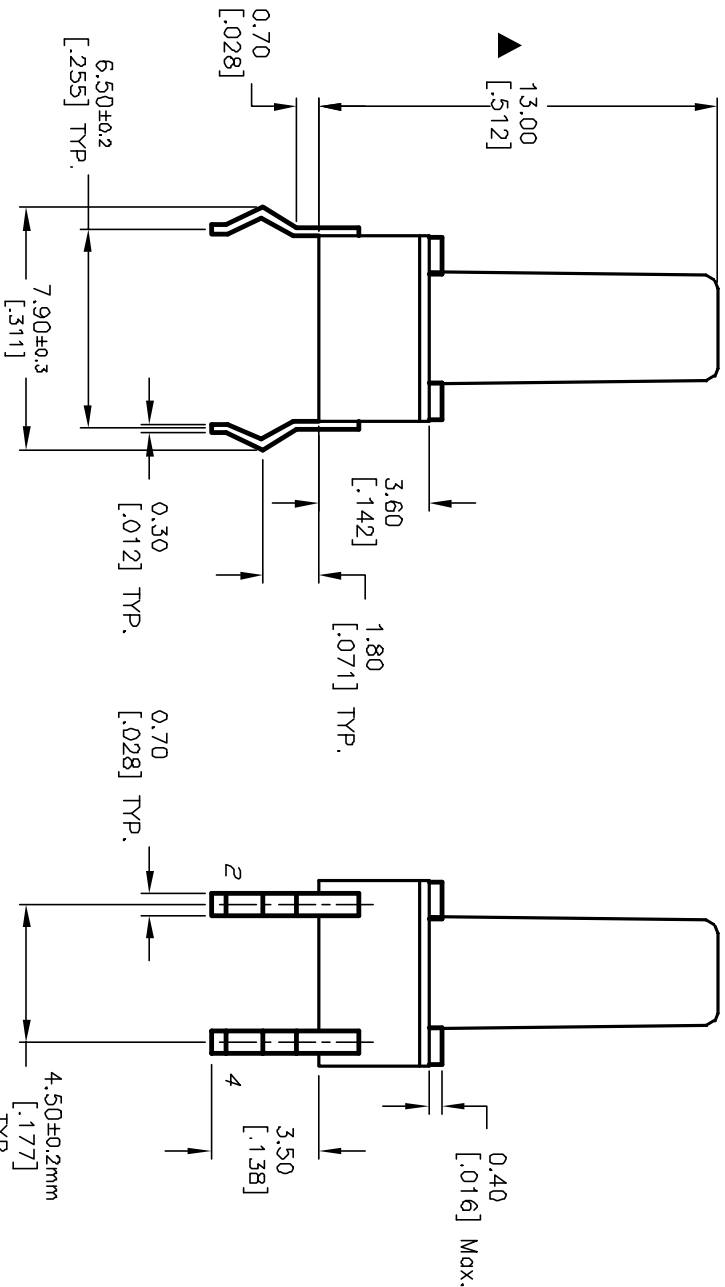


RECOMMENDED P.C.B. LAYOUT  
SCALE 3:1



CIRCUIT: SPST



NOTES:

1. ALL DIMENSIONS IN MM [INCH]
2. GENERAL TOLERANCE: XX=±0.4  
X.XX=±0.25
3. TERM. NOS. FOR REFERENCE ONLY.
4. RATINGS: 12VDC, 50mA
5. OPERATING FORCE: 100±50gf
6. TRAVEL: 0.25±0.1mm
7. CONTACT RESISTANCE: 100 MILLI Ω Max.
8. DIELECTRIC STRENGTH: 250V RMS min.
9. INSULATION RESISTANCE: 100 Mega Ω min.
10. ELECTRICAL LIFE: 100,000 CYCLES min.
11. DESIGNATE MAJOR FEATURE:

|   |  |         |  |                         |  |         |  |      |  |                |  |       |  |         |  |     |  |         |  |     |  |
|---|--|---------|--|-------------------------|--|---------|--|------|--|----------------|--|-------|--|---------|--|-----|--|---------|--|-----|--|
| REV.  |  | ECN No. |  | DESCRIPTION             |  | DATE    |  | CHKD |  | TITLE          |  | SCALE |  | DATE    |  | DR  |  | DWG     |  | REV |  |
| A   |  | 11621   |  | RELEASED FOR PRODUCTION |  | 8/20/01 |  | CJB  |  | TL1105D F100 Q |  | 4:1   |  | 8/20/01 |  | CJB |  | D310010 |  | A   |  |
| <p>THE INFORMATION CONTAINED IN THIS DOCUMENT IS PROPRIETARY TO E-SWITCH AND IS NOT TO BE COPIED OR TRANSFERRED</p> |  |         |  |                         |  |         |  |      |  |                |  |       |  |         |  |     |  |         |  |     |  |

**E-SWITCH®**