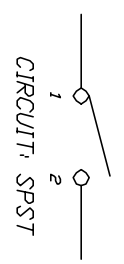
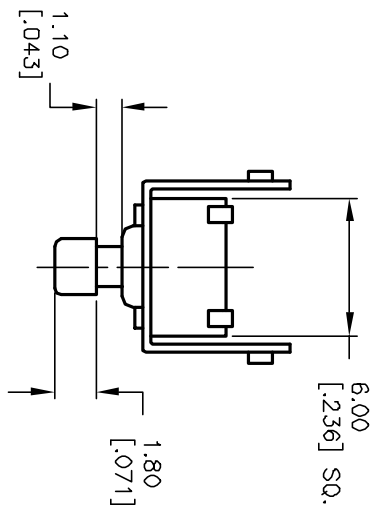


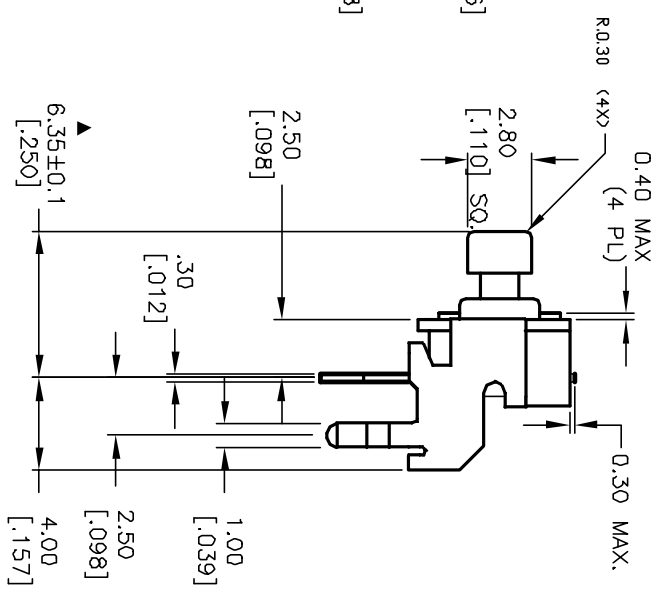
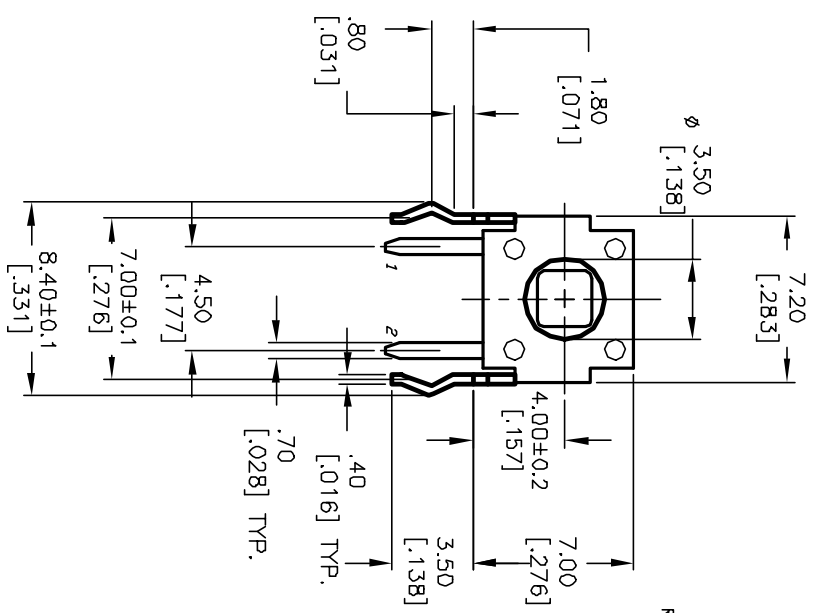
RECOMMENDED P.C.B. LAYOUT

SCALE 4:1



NOTES:

1. ALL DIMENSIONS IN MM [INCH]
2. GENERAL TOLERANCE: X.X=±0.4
X.XX=±0.25
3. TERM. NOS. FOR REFERENCE ONLY.
4. RATINGS: 12VDC, 50mA
5. OPERATING FORCE: 100±50gf
6. TRAVEL: 0.25±0.1mm
7. CONTACT RESISTANCE: 100 mΩ Max.
8. DIELECTRIC STRENGTH: 250V RMS min.
9. INSULATION RESISTANCE: 100 Mega Ω min.
10. ELECTRICAL LIFE: 100,000 CYCLES min.
11. DESIGNATE MAJOR FEATURE:
12. HOUSING COLOR: BLACK



E-SWITCH®

A		12357	ADD NOTCH	9/23/02	CB	TITLE	TL1105JA F100 Q (STD BRACKET)	DR	---	DWG	P010209	REV	A
REV.	ECN No.	DESCRIPTION		DATE	CHKD	SCALE	3:1	DATE	---	DR	---	DWG	P010209
<p>THE INFORMATION CONTAINED IN THIS DOCUMENT IS PROPRIETARY TO E-SWITCH AND IS NOT TO BE COPIED OR TRANSFERRED</p>													