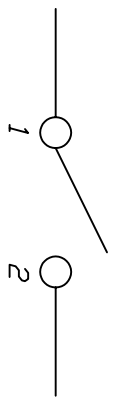
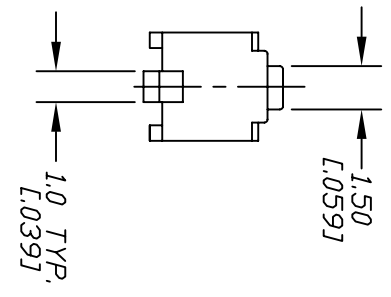
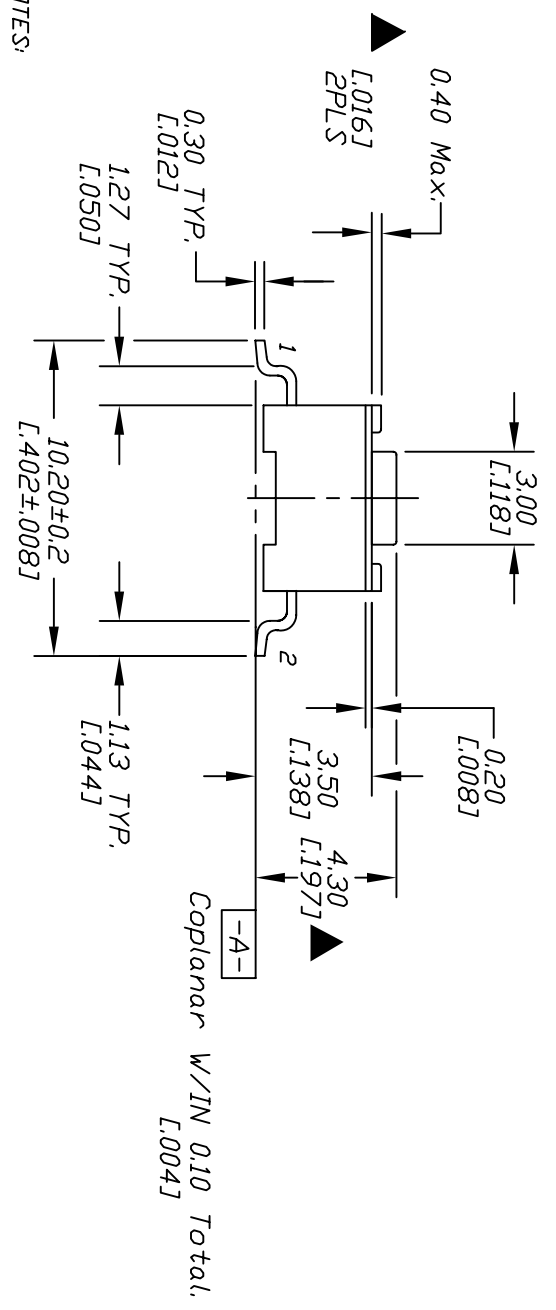


RECOMMEND P.C.B. PADS



CIRCUIT: SPST
CONTACT CONFIGURATION

- NOTES:
1. ALL DIMENSIONS IN MM [IN]
 2. TERM. NDS. FOR REF. ONLY
 3. CONTACT RESISTANCE: 100m Ohms Max.
 4. MAT'L: CASE: PPS-RYTON-R-4
STEM: NYLON 4/6
 5. ▲ DESIGNATE MAJOR DIMENSIONS
 6. PACKAGE: TAPE AND REEL, 1800 COUNT
 7. CONTACT MATERIAL: SILVER
 8. OPERATING FORCE: 180±50gf
 9. RATING: DC 12V @ 50ma
 10. 2002/95/EC (RoHS) COMPLIANT

E		UPDATED NOTES		11/10/06	TN		
D		REVISED & REDRAWN					
REV.		DESCRIPTION		DATE	CHKD		
THE INFORMATION CONTAINED IN THIS DOCUMENT IS PROPRIETARY TO E-SWITCH AND IS NOT TO BE COPIED OR TRANSFERRED							
TOLERANCES							
0.0	±0.4						
0.00	±0.25						
TITLE		SCALE		DATE		DR	
E-SWITCH®		4:1		11/10/2006		TN	
TL3302AF1800G						DWG	
						P010520	
						REV	
						E	