

SERIES TL 1150 SWITCHES

TACT SWITCHES



E-SWITCH®



SPECIFICATIONS

Contact Rating:	50mA @ 30 VDC
Life Expectancy:	1,000,000 cycles
Contact Resistance:	100mΩ @ 5 VDC
Insulation Resistance:	100MΩ min.
Dielectric Strength:	600 VAC
Actuation Force:	70 ± 20 gf
Operating Temperature:	-25°C to 85°C
Travel:	0.35mm ±0.2mm

FEATURES & BENEFITS

- ▶ Long operating life (1,000,000 cycles)
- ▶ 2-lead 6mm x 6mm design

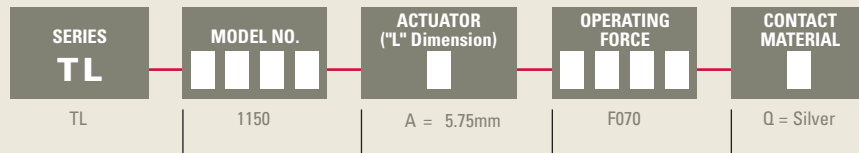
APPLICATIONS/MARKETS

- ▶ Telecommunications
- ▶ Consumer Electronics
- ▶ Audio/visual
- ▶ Medical
- ▶ Testing/instrumentation
- ▶ Computer/servers/peripherals

MATERIALS

Actuator:	Nylon
Base:	Nylon
Cover:	Nylon
Terminals:	Copper alloy, silver plated

HOW TO ORDER

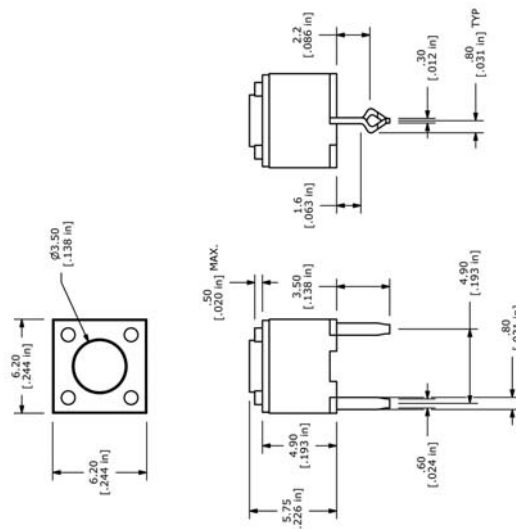


Example Ordering Number

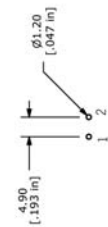
TL-1150-A-F070-Q

Specifications subject to change without notice.

TL 1150



SCHEMATIC



P.C. MOUNTING