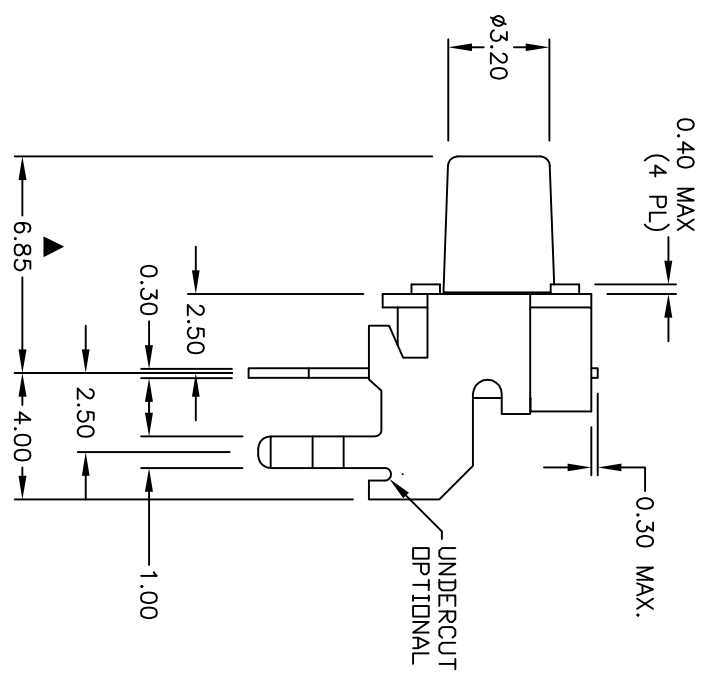
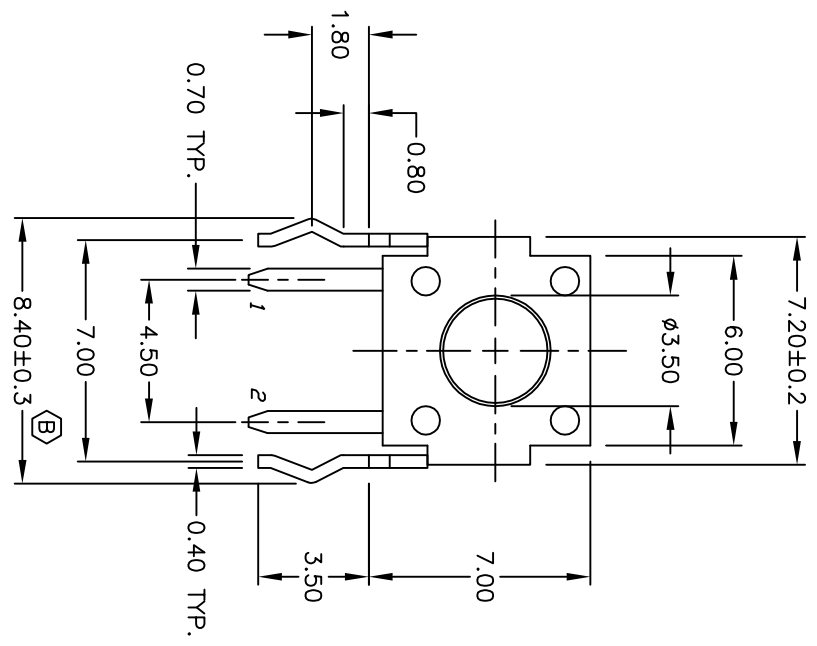
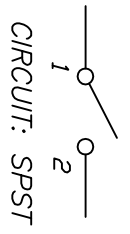


RECOMMENDED P.C.B. LAYOUT



- NOTES:
1. ALL DIMENSIONS IN MM
 2. GENERAL TOLERANCE: X.X=±0.4
X.XX=±0.25
 3. TERM. NOS. FOR REF. ONLY
 4. RATING: 50mA, @12V DC
 5. TRAVEL: 0.25±0.1mm
 6. OPERATING FORCE: 250±50gf
 7. CONTACT RESISTANCE: 100 milliohms Max.
 8. ELECTRICAL LIFE: 100,000 CYCLES MIN.
 9. ▲ DESIGNATE MAJOR FEATURE
 10. ▲ ACTUATOR COLOR: RED
 11. HOUSING COLOR: BLACK

B	18128	DNE TOLERANCE WAS +/- 0.1	6/9/08	BLR
A	12370	RELEASED	8/14/02	CJB
REV.	ECN NO.	DESCRIPTION	DATE	CHKD

		TITLE	SCALE	DATE	DR	DWG	REV
		TL 1105 M F250 Q	4:1	--	--	P020226	B

THE INFORMATION CONTAINED IN THIS DOCUMENT IS PROPRIETARY TO E-SWITCH AND IS NOT TO BE COPIED OR TRANSFERRED