

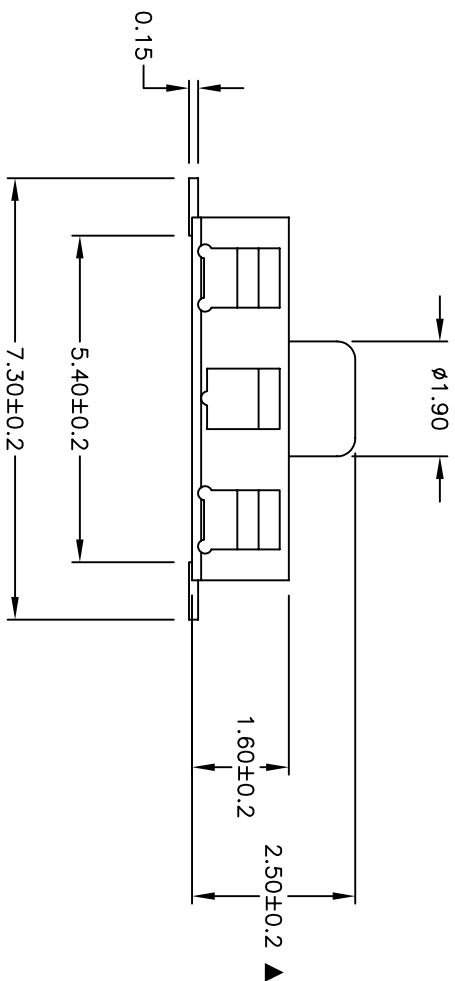
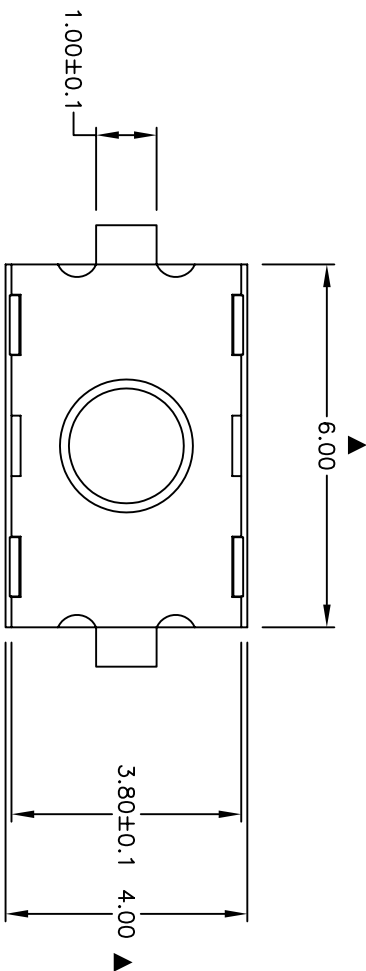
RECOMMENDED P.C.B. LAND  
SCALE 4:1



CIRCUIT: SPST NORMALLY CLOSED  
CONTACT CONFIGURATION

NOTES:

1. ALL DIMENSIONS IN MM
2. GENERAL TOLERANCE: X.X=±0.4  
X.XX=±0.25
3. TRAVEL: 0.3±0.15
4. RATING: 50mA, 50V DC
5. OPERATING FORCE: 120±50gf
6. MECHANICAL LIFE: 100K cycles
7. CONTACT RESISTANCE: 100 milli-Ohms max. (INITIAL)
8. INSULATION RESISTANCE: 1000 MEGA-Ohms
9. DIELECTRIC STRENGTH: 250V 50/60 HZ for 1 minute
10. OPERATING TEMP.: -20°C to +70°C
11. STORAGE TEMP.: -20°C to +80°C
12. BOUNCE: 10m SEC max.
13. MATERIALS:  
HOUSING: NYLON 4/6  
STEM: SILICON RUBBER  
FRAME: STAINLESS STEEL  
TERMINALS: BRASS STRIP, SILVER PLATED
14. SWITCH TO BE SUPPLIED TAPE & REEL.  
QTY. 3000 /REEL
15. ▲ DENOTES CRITICAL PARAMETER.
16. 2002/95/EC (ROHS) COMPLIANT



REV.	ECN No.	DESCRIPTION	DATE	CHKD	SCALE	DATE	DR	DWG	REV
D	16830	FIXED PART DISC. AND NOTES	1/5/07	TN	8:1	1/5/07	TN	D370000	D
C	16294	CHANGE REEL QUANTITY	8/8/06	BD					
B	13619	CHANGE REEL QUANTITY	11/21/03	AR					
A	13434	RELEASED FOR PRODUCTION	9/9/03	AR					
THE INFORMATION CONTAINED IN THIS DOCUMENT IS PROPRIETARY TO E-SWITCH AND IS NOT TO BE COPIED OR TRANSMITTED					TITLE				
					TL3310AF1200G				