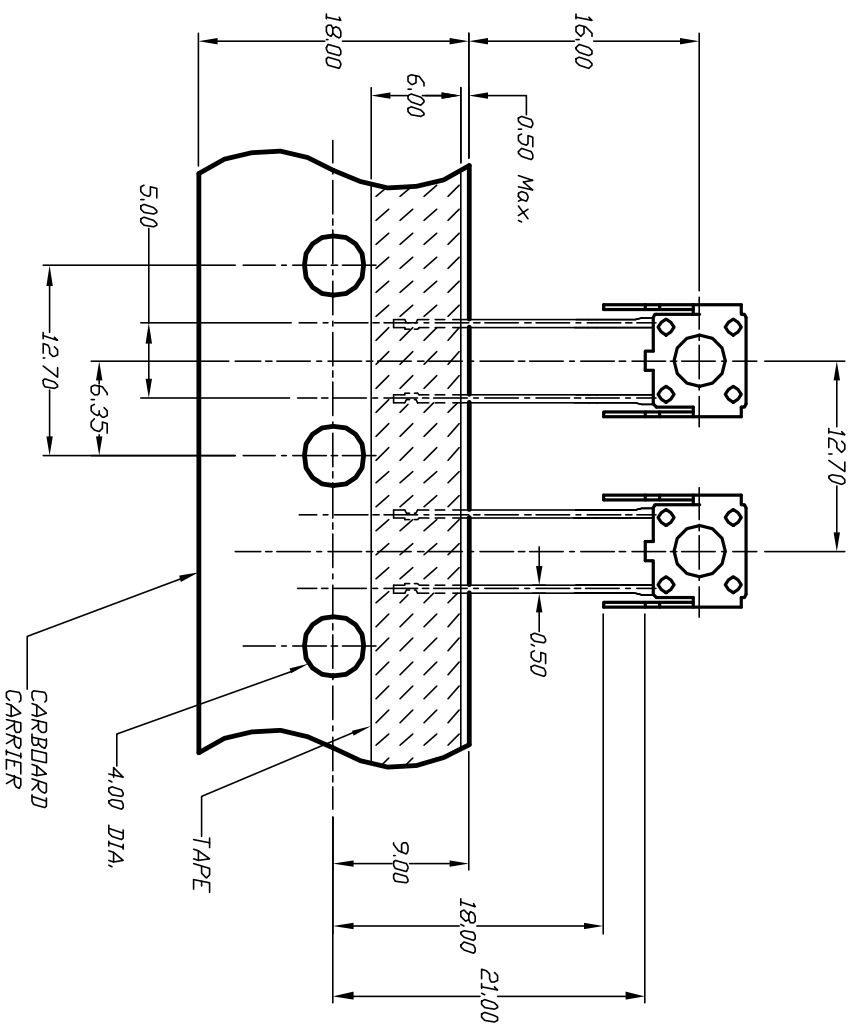


CONTACT CONFIGURATION



1. ALL DIMENSIONS IN MM
2. GENERAL TOLERANCE:  $0.0 \pm 0.4$   
 $0.00 \pm 0.25$
3. TERM. NOS. FOR REF. ONLY
4. CONTACT RATING: 50mA, @12VDC
- ▲ 5. OPERATING FORCE:  $100 \pm 50gf$
6. TRAVEL:  $0.25 + 0.2 / - 0.1mm$
7. CONTACT RESISTANCE: 100 milliohms Max.
8. CARRIER IS FOLDED EVERY 25 PITCHES  
(24 SWITCHES PER FOLD)
9. 700 SWITCHES PER BOX
- ▲ 10. DESIGNATE MAJOR DIMENSIONS

TITLE				TL 58 WFI100 (Actor = 3.15mm)			
B	13210	NOTE 9 WAS 1000	6/13/03	AR			
A	12352	WAS 2000495	8/6/02	CB			
REV.	ECN NO.	DESCRIPTION	DATE	CHKD			
THE INFORMATION CONTAINED IN THIS DOCUMENT IS PROPRIETARY TO E-SWITCH AND IS NOT TO BE COPIED OR TRANSFERRED							
SCALE		DATE		DR	DWG	REV	
2:1		8/6/02		CB	P010610	B	