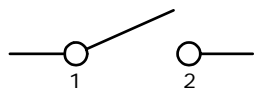


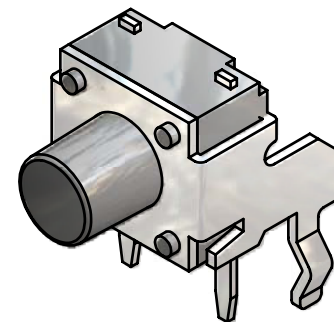
P.C.B. LAYOUT



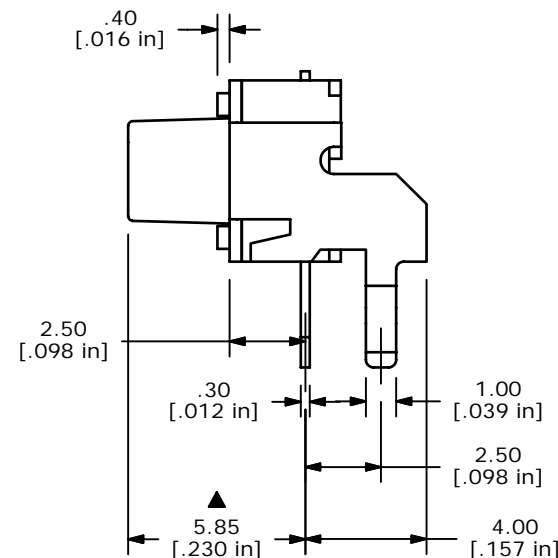
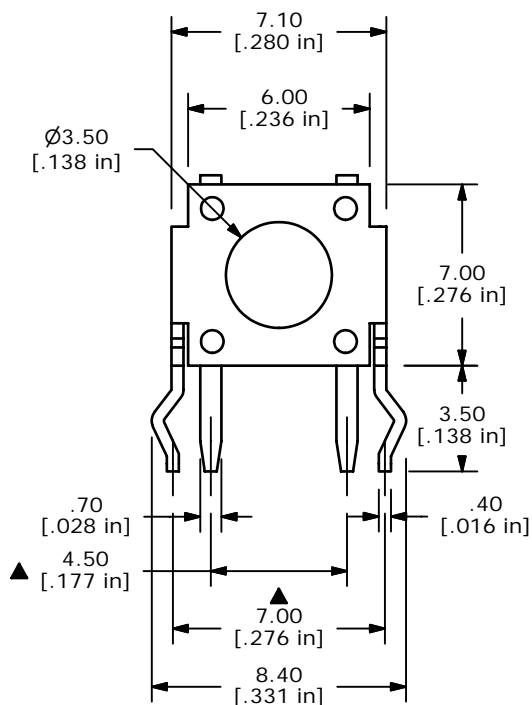
CIRCUIT: SPST

NOTES:

1. ALL DIMENSIONS IN MM [INCH]
2. GENERAL TOLERANCE: x.xx ± 0.4  
x.xx ± 0.25
3. TERM. NOS. FOR REF. ONLY
4. RATING: 50mA, @12V DC
5. TRAVEL: 0.25± 0.1mm
6. ELECTRICAL LIFE: 5,000,000 CYCLES.
7. INSULTION RESISTANCE: 100M ohms min.
8. OPERATING TEMP.: -30°C to 85°C
9. ▲DENOTES CRITICAL PARAMETER
- ▲10. OPENING FORCE: 65± 20 GRAMS
11. PACKAGING: 1000 PCS PER POLYBAG
- ▲12. CONTACT MATERIAL: SILVER
13. 2002/95/EC (ROHS) COMPLIANT



ISOMETRIC



TITLE LL1105XF065Q

A	16650	RELEASED FOR PRODUCTION	11/20/06	TN
REV	PCR NO	DESCRIPTION	DATE	BY

THE INFORMATION CONTAINED IN THIS DOCUMENT IS PROPRIETARY TO E-SWITCH AND IS NOT TO BE COPIED OR TRANSFERRED

SCALE	DATE	DR	DWG	REV
4:1	11/20/2006	TN	P010245	A