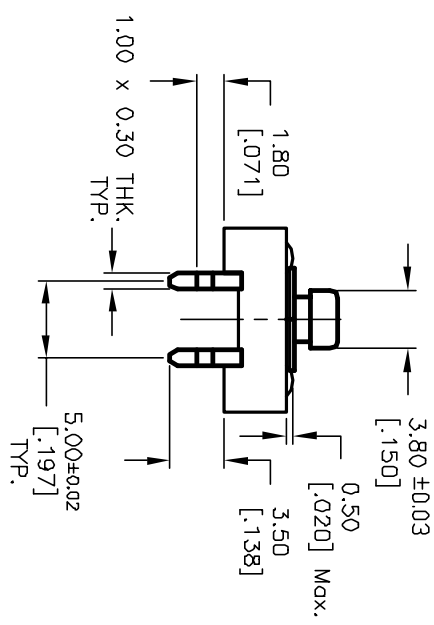
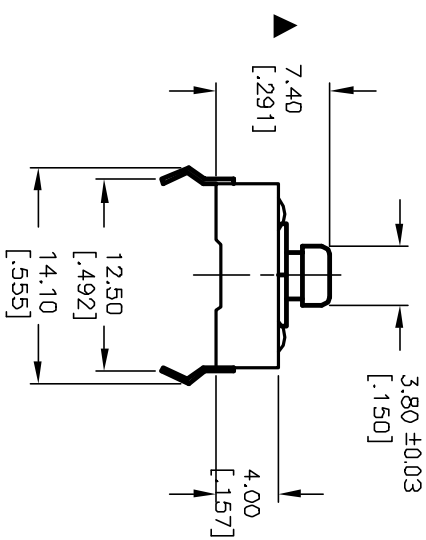
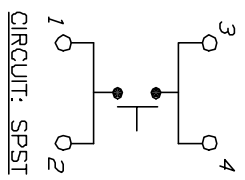
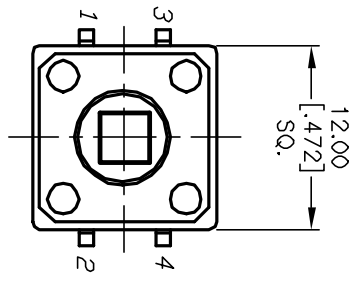


RECOMMENDED P.C.B. LAYOUT



- NOTES:
1. ALL DIMENSIONS IN MM [INCH]
 2. GENERAL TOLERANCE: X.X=±0.4 X.XX=±0.25
 3. TERM. NQS. FOR REF. ONLY
 4. RATING: 50mA, @12V DC
 5. MATERIAL (CONTACT): Silver
 6. TRAVEL: 0.30±0.15mm
 7. OPERATING FORCE: 260±50gf
 8. CONTACT RESISTANCE: 100 MILLIOHMS Max.
 9. ELECTRICAL LIFE: 100,000 CYCLES MIN.
 10. INDICATE MAJOR FEATURE.

REV.	ECN No.	DESCRIPTION	DATE	CHKD
A	11584	RELEASED FOR PRODUCTION	7/26/01	CJB

TITLE	SCALE	DATE	DR	DWG	REV
TL 1100 A F260 Q (3.80 SQ. ACTUATOR)	2:1	7/26/01	CJB	D301112	A



THE INFORMATION CONTAINED IN THIS DOCUMENT IS PROPRIETARY TO E-SWITCH AND IS NOT TO BE COPIED OR TRANSFERRED