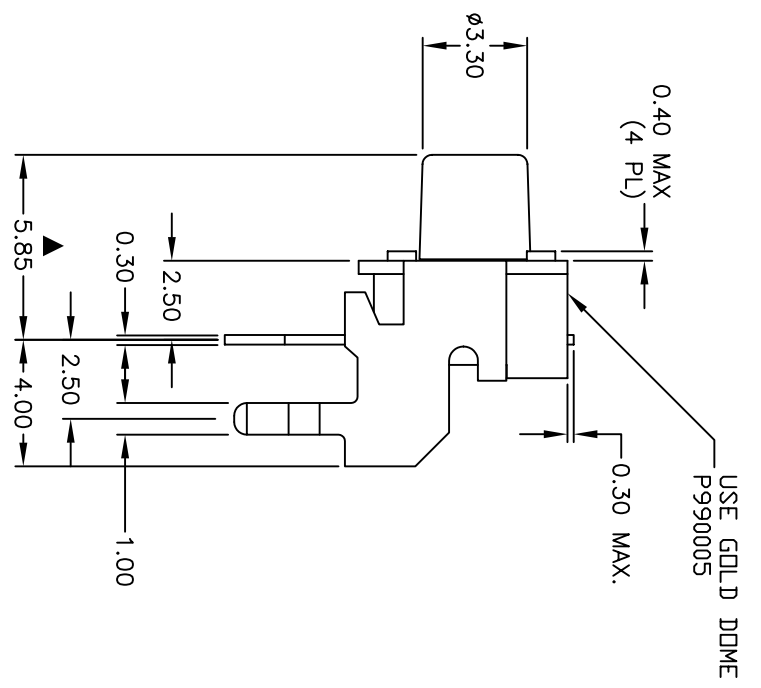
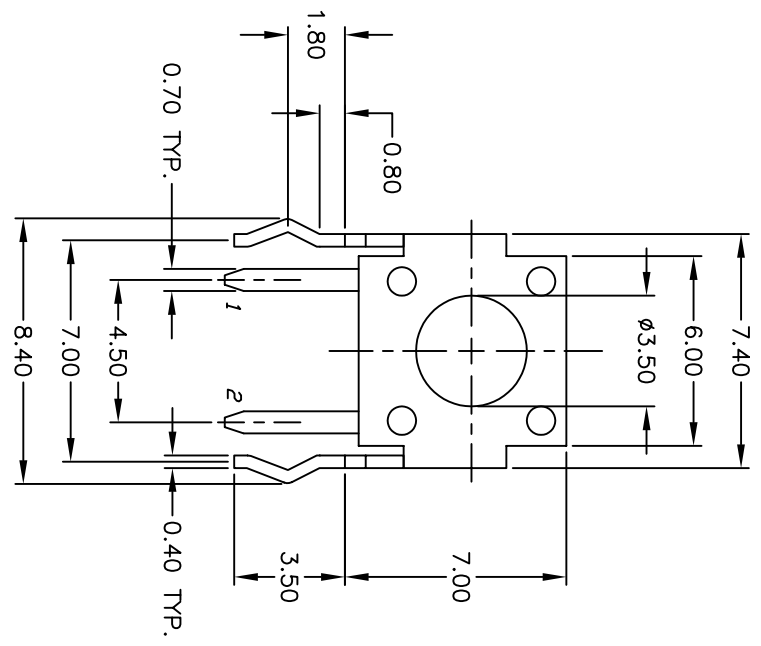
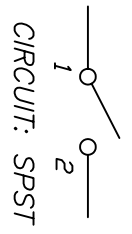


RECOMMENDED P.C.B. LAYOUT



- NOTES:
1. ALL DIMENSIONS IN MM
  2. GENERAL TOLERANCE: X.X=±0.4  
X.XX=±0.25
  3. TERM. NOS. FOR REF. ONLY
  4. MATERIAL: GOLD
  5. RATING: 50mA, @12V DC
  6. TRAVEL: 0.25±0.1mm
  7. OPERATING FORCE: 160±50gf
  8. CONTACT RESISTANCE: 100 milliohms Max.
  9. ELECTRICAL LIFE: 100,000 CYCLES MIN.
  10. ▲ DENOTES CRITICAL PARAMETER.

B	16109	ADD GOLD DOME NOTE	6/6/06	CT
A	13727	RELEASED FOR PRODUCTION	1/21/04	CJB
REV.	ECN NO.	DESCRIPTION	DATE	CHKD

**E-SWITCH®**

TL1105XF160R

SCALE	DATE	DR	DWG	REV
4:1	1/21/04	AR	P020229	B

THE INFORMATION CONTAINED IN THIS DOCUMENT IS PROPRIETARY TO E-SWITCH AND IS NOT TO BE COPIED OR TRANSFERRED