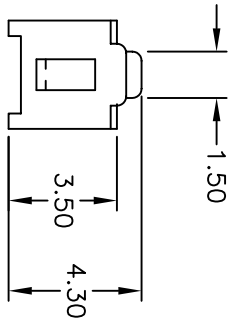
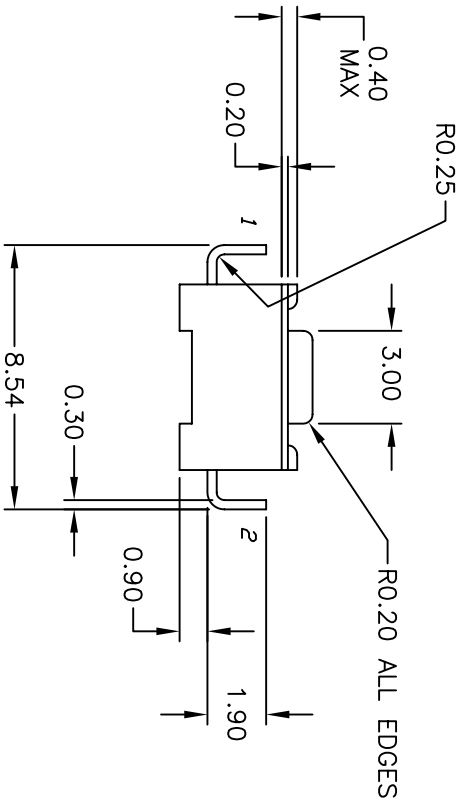


SUGGESTED PCB LAYOUT



CIRCUIT: SPST

CONTACT CONFIGURATION

- NOTES:
1. ALL DIMENSIONS IN MM
 2. TERM. NDS. FOR REF DNLY
 3. RATING: DC 12V, 50mA
 4. TRAVEL: 0.25±0.1mm
 5. CONTACT RESISTANCE: 100m Ohms Max.
 6. MECHANICAL/ELECTRICAL LIFE: 40,000 CYCLES
 7. PACKAGE: BULK, 1,000 PCS PER BAG
 8. 2002/95/EC (ROHS) COMPLIANT
 9. OPERATING FORCE: 130± 50gf

| | | | | |
|------|---------|---------------------------|---------|------|
| E | 16626 | UPDATED NOTES, Q TD TITLE | 11/9/06 | TN |
| D | 10899 | ADD PCB CUTOUT | 8-24-00 | GLG |
| REV. | ECN No. | DESCRIPTION | DATE | CHKD |

E-SWITCH®

TITLE: TL1107AF130EQ

SCALE: 4:1 DATE: 11/9/2006 DR: TN DWG: P010316 REV: E

THE INFORMATION CONTAINED IN THIS DOCUMENT IS PROPRIETARY TO E-SWITCH AND IS NOT TO BE COPIED OR TRANSFERRED