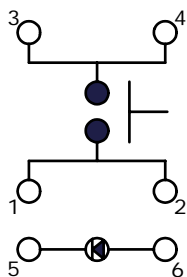
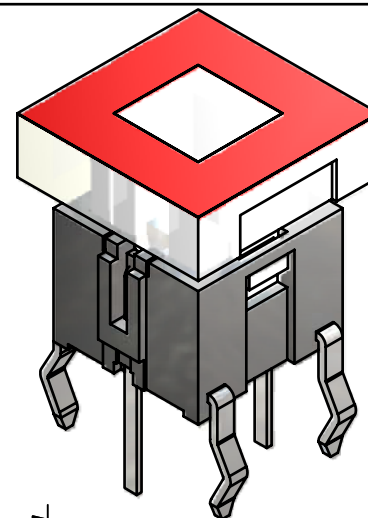
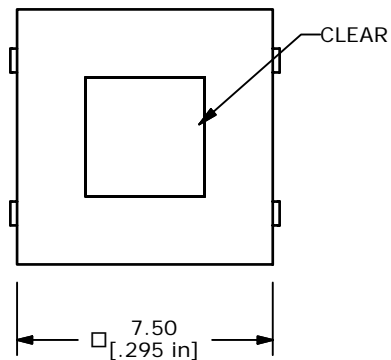


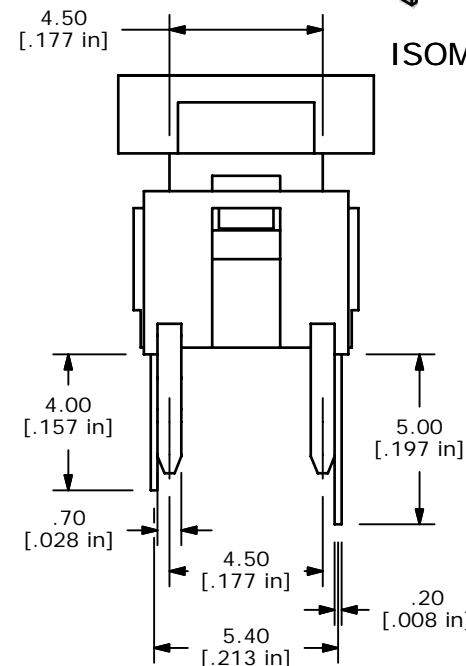
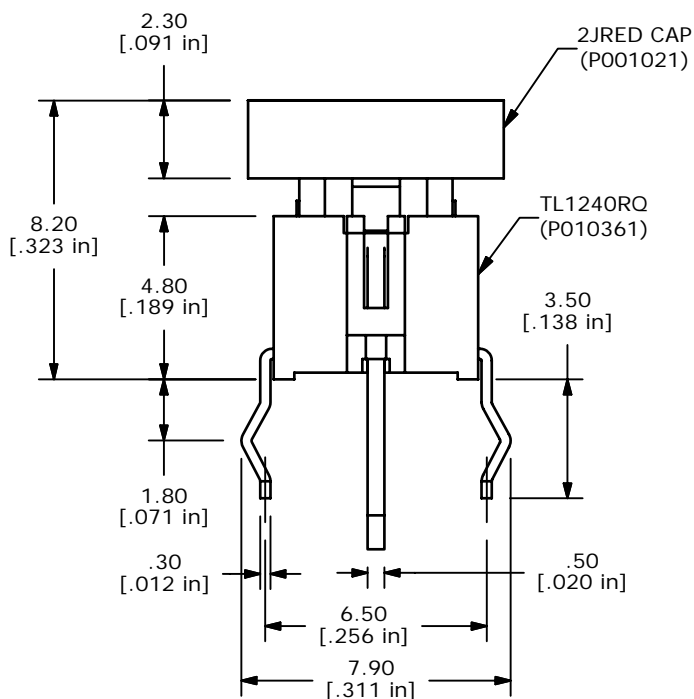
P.C.B. LAYOUT



CIRCUIT: SPST



ISOMETRIC



- NOTES:
1. ALL DIMENSIONS IN MM
 2. GENERAL TOLERANCE: X.X=±0.4
X.XX=±0.25
 3. RATING: 50mA, 12VDC
 4. TRAVEL: 0.25 +0.2/0.1mm
 5. OPERATING FORCE: 160±50gf
 6. CONTACT RESISTANCE: 100mILLI-Ohms Max
 7. PACKAGING: TRAY
 8. CONTACT MATERIAL: SILVER
 9. 2002/95/EC (ROHS) COMPLIANT

E-SWITCH®

TITLE TL1240RQ2JRED

A	16784	RELEASED FOR PRODUCTION	12/21/06	TN
REV	PCR NO	DESCRIPTION	DATE	BY

SCALE	DATE	DR	DWG	REV
4.5:1	12/21/2006	TN	XP0294A	A

THE INFORMATION CONTAINED IN THIS DOCUMENT IS PROPRIETARY TO E-SWITCH AND IS NOT TO BE COPIED OR TRANSFERRED