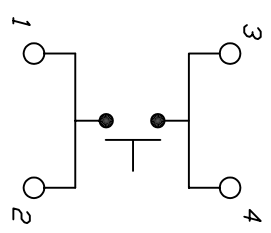


RECOMMENDED MOUNTING PAD

SCALE: 4:1

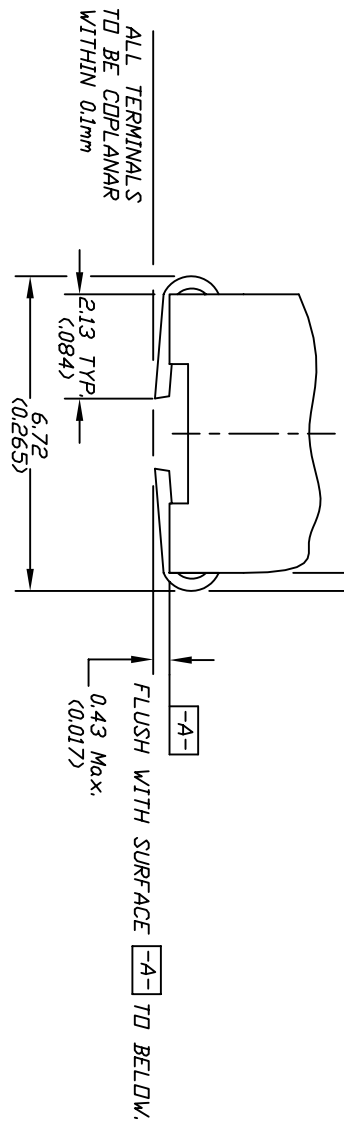
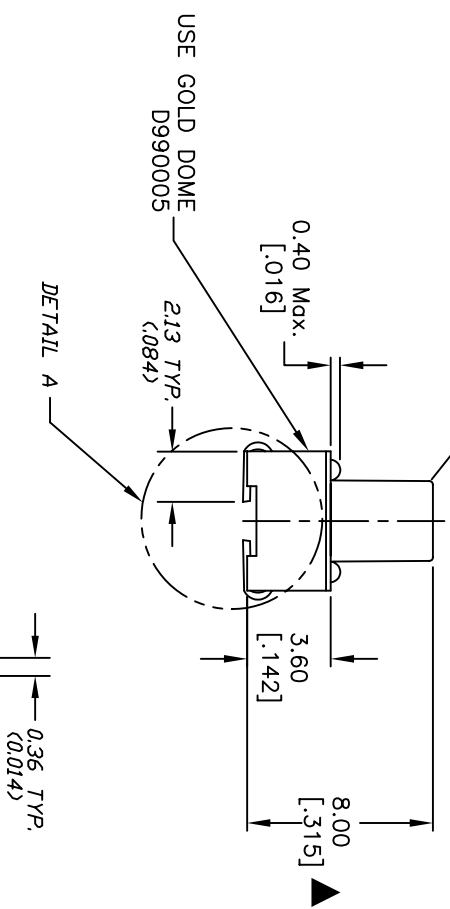
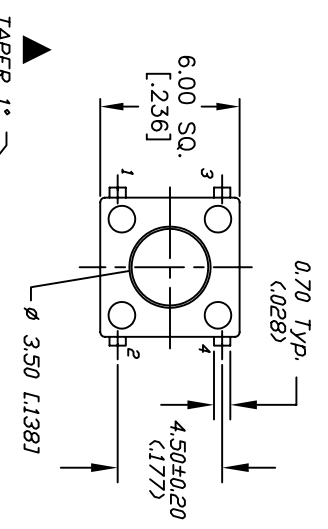


CIRCUIT: SPST

- NOTES:
1. ALL DIMENSIONS IN MM [INCH]
 2. GENERAL TOLERANCE: X.X=±0.4
X.XX=±0.25
 3. TERM. NOS. FOR REF. ONLY
 4. RATING: 50mA, @12V DC
 - ▲ 5. BODY & STEM: PPS RYTON R-4
ACTUATOR COLOR: BLACK
BODY: BROWN
 6. OPERATING FORCE: 160 ±50gf
 7. TRAVEL: 0.25 ±0.1mm
 8. CONTACT MATERIAL: GOLD
 9. CONTACT RESISTANCE: 100 ohms max.
 10. PACKAGED: TAPE & REEL, 400 PIECES PER REEL
 11. 2002/95/EC (ROHS) COMPLIANT
 12. ▲ DESIGNATE MAJOR FEATURE:

REV.	ECN No.	DESCRIPTION	DATE	CHKD
E	16573	UPDATED NOTES	10/24/06	TN
D	16542	DOME FROM D990006 TO D990005	10/18/06	TN
C	16537	CORRECTED DOME	10/17/06	TN
B	15386	ADD RDHS, GOLD DOME INFO	10/12/05	PH
A	13024	RELEASED FOR PRODUCTION	4/9/03	AR

SCALE	DATE	DR	DWG	REV
3:1	4/9/03	AR	D310590	E



DETAIL A
SCALE 6:1



TL3301CF160RJ

THE INFORMATION CONTAINED IN THIS DOCUMENT IS PROPRIETARY TO E-SWITCH AND IS NOT TO BE COPIED OR TRANSFERRED