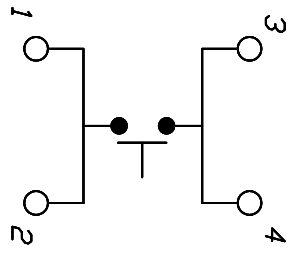
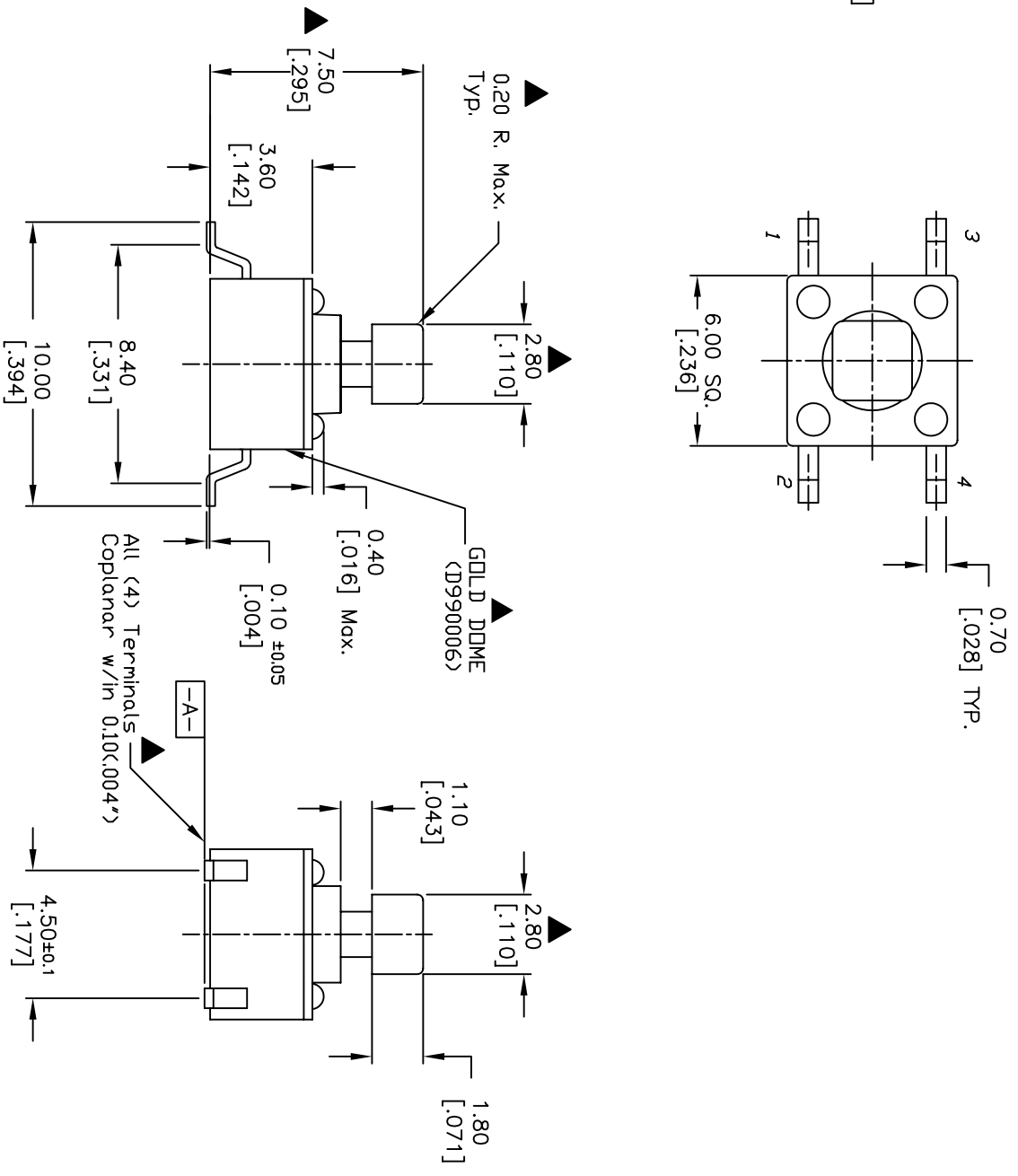


RECOMMENDED MOUNTING PAD



CIRCUIT: SPST

- NOTES:
1. ALL DIMENSIONS IN MM [INCH]
  2. GENERAL TOLERANCE: X.X=±0.4  
X.XX=±0.25
  3. TERM. NOS. FOR REFERENCE ONLY.
  4. RATINGS: 12VDC, 50ma
  5. CONTACT MATERIAL: GOLD DOME (D9900006)
  6. OPERATING FORCE: 100±50gf
  7. TRAVEL: 0.25±0.1mm
  8. CONTACT RESISTANCE: 100 MILLI Ω Max.
  9. ELECTRICAL LIFE: 100,000 CYCLES min.
  10. DESIGNATE MAJOR FEATURE:
  11. BODY& STEM: HIGH TEMP. PLASTIC -PPS RYTON-R-4
  12. PACKAGED: TAPE & REEL
  13. 2002/95/EC (ROHS) COMPLIANT.



B	16596	ADDED GOLD DOME,NOTES	10/27/06	TN
A	11994	RELEASED FOR PRODUCTION	3/12/02	CJB
REV.	ECN NO.	DESCRIPTION	DATE	CHKD

TITLE		SCALE	DATE	DR	DWG	REV
TL 3301SPF100RG		4:1	3/12/02	CJB	D310803	B



THE INFORMATION CONTAINED IN THIS DOCUMENT IS PROPRIETARY TO E-SWITCH AND IS NOT TO BE COPIED OR TRANSMITTED