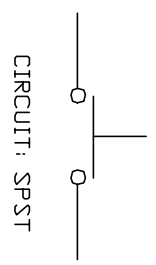
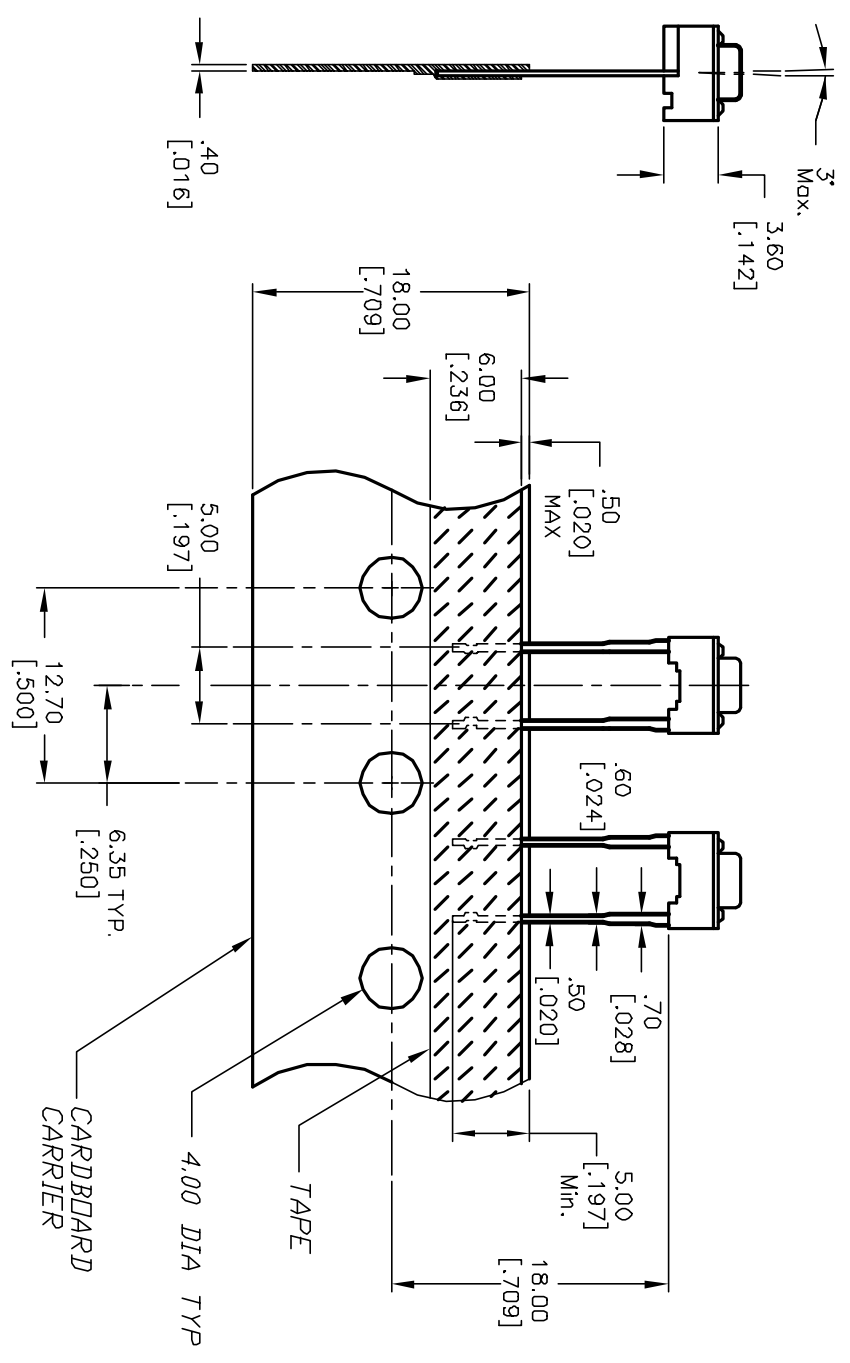


RECOMMENDED P.C.B. LAYOUT



CIRCUIT: SPST

- NOTES:
1. ALL DIMENSIONS IN MM [INCH]
 2. GENERAL TOLERANCE: X.XX=±0.4
X.XX=±0.25
 3. CONTACT RATING: 50mA @12V DC
 4. CONTACT MATERIAL: SILVER
 5. OPERATING FORCE: 260±50gf
 6. TRAVEL: 0.25 +0.2/-0.1
 7. CONTACT RESISTANCE: 100mILLI Ohms max.
 8. ELECTRICAL LIFE: 100,000 CYCLES
 9. PACKAGING:
CARRIER IS FOLDED EVERY 25 PITCHES
(24) SWITCHES PER FOLD
(1,000) SWITCHES PER BOX



E-SWITCH®

REV.	ECN No.	DESCRIPTION	DATE	CHKD
A	12008	RELEASED FOR PRODUCTION	3/22/02	CB

TITLE	SCALE	DATE	DR	DWG	REV
TL59A F260 Q (RED ACTUATOR)	2:1	8/21/01	CB	D310621	A

THE INFORMATION CONTAINED IN THIS DOCUMENT IS PROPRIETARY TO E-SWITCH AND IS NOT TO BE COPIED OR TRANSFERRED