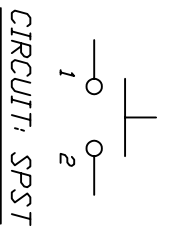
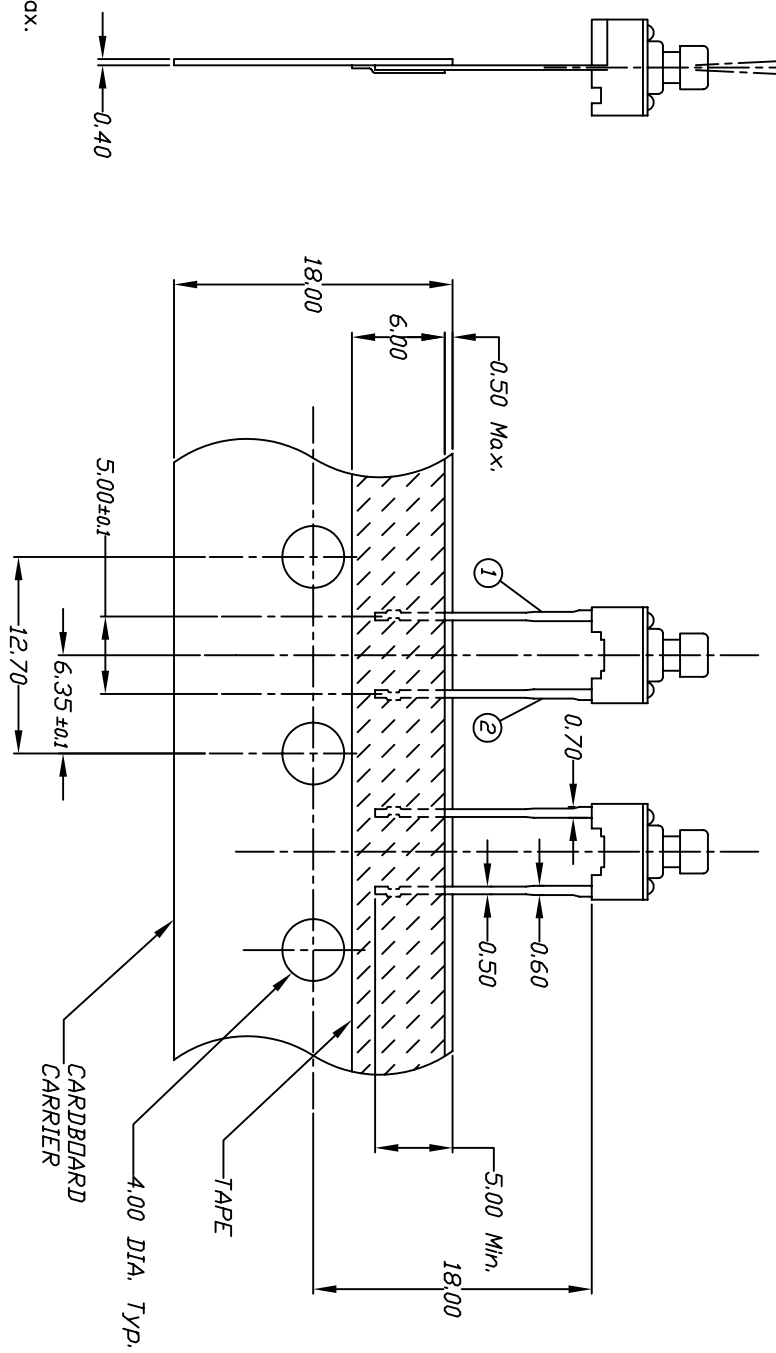


RECOMMEND P.C.B. LAYOUT



CONTACT CONFIGURATION



NOTES:

1. ALL DIMENSIONS IN MM [INCH]
2. GENERAL TOLERANCE: X.X=±0.4
X.XX=±0.25
3. CONTACT RATING: 50mA @12V DC
- ▲4. CONTACT MATERIAL: SILVER
- ▲5. OPERATING FORCE: 160±50gf
6. TRAVEL: 0.25 +0.2/-0.1
7. CONTACT RESISTANCE: 100MILLI OHMS max.
8. ELECTRICAL LIFE: 100,000 CYCLES
9. PACKAGING:
CARRIER IS FOLDED EVERY 25 PITCHES
(24) SWITCHES PER FOLD
(1,000) SWITCHES PER BOX
10. 2002/95/EC (ROHS) COMPLIANT
11. ▲ DENOTES MAJOR DIMENSION.

REV.	PCR	DESCRIPTION	DATE	CHKD
B	16833	DIM .30 TD .25, UPDATED NOTES	1/5/07	TN
A	--	RELEASED FOR PRODUCTION		

THE INFORMATION CONTAINED IN THIS DOCUMENT IS PROPRIETARY TO E-SWITCH AND IS NOT TO BE COPIED OR TRANSFERRED

TOLERANCES	
0.0	±0.4
0.00	±0.25

TITLE		SCALE	DATE	DR	DWG	REV
TL59SPF160Q		2:1	1/5/2007	TN	P010585	B

