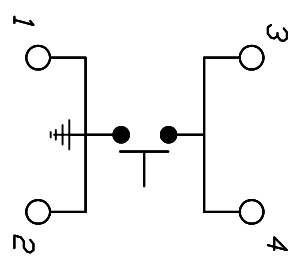
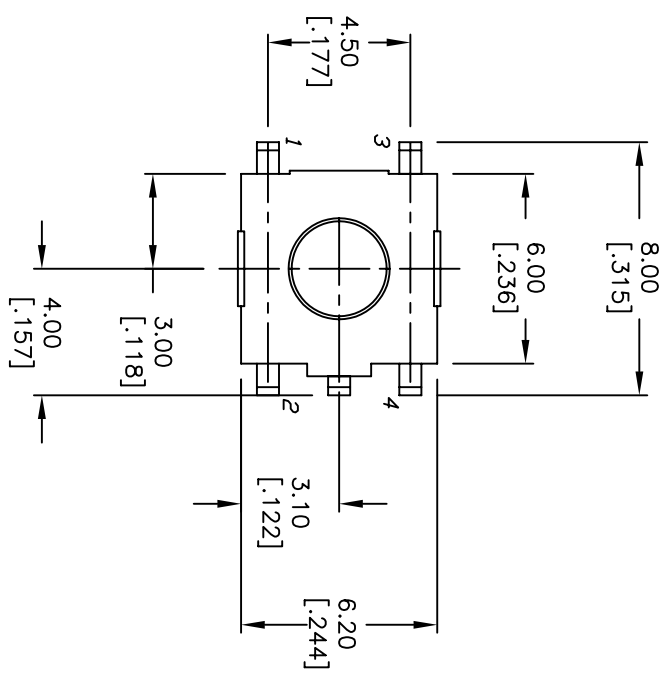
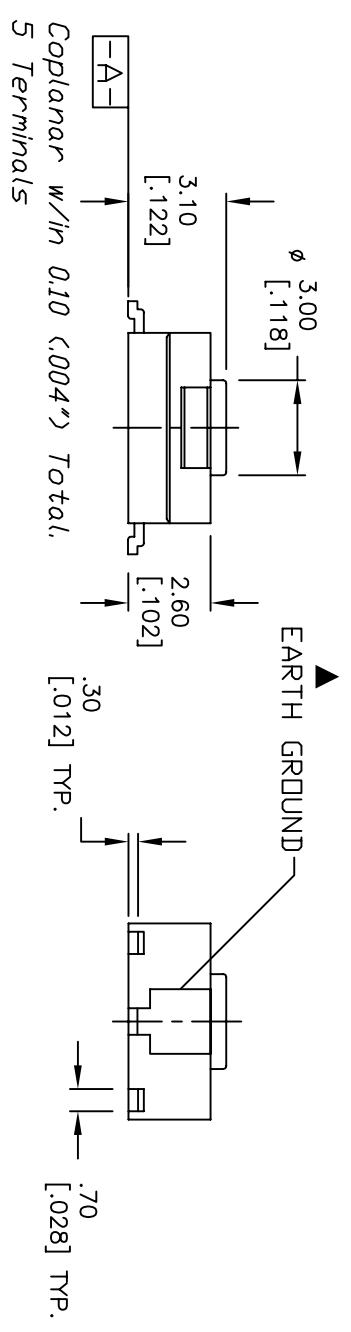


RECOMMENDED P.C.B. LAND



CIRCUIT: SPST

- NOTES:
1. ALL DIMENSIONS IN MM [INCH]  
~UNLESS OTHERWISE SPECIFIED
  2. GENERAL TOLERANCE: X.X=±0.4  
X.XX=±0.25
  3. TERMINAL NOS FOR REF. ONLY
  4. TRAVEL: 0.25 ±.1mm
  5. RATING: 50mA, 12VDC (GOLD CONTACTS)
  6. OPERATING FORCE: 160±50gf
  7. CONTACT RESISTANCE: 100M OHM MAX.
  8. PACKAGED: TAPE & REEL, 1500
  9. DESIGNATE MAJOR DIMENSIONS
  10. 2002/95/EC (ROHS) COMPLIANT



C	16646	UPDATED NOTES	11/13/06	TN
B	11904	REVISED AND REDRAWN	7/9/02	CJB
REV.	ECN NO.	DESCRIPTION	DATE	CHKD

SCALE	4:1	DATE	11/13/2006	DR	TN	DWG	P010525	REV	C
TITLE	TLE3303F1600G								

THE INFORMATION CONTAINED IN THIS DOCUMENT IS PROPRIETARY TO E-SWITCH AND IS NOT TO BE COPIED OR TRANSFERRED