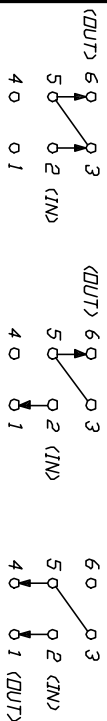


RECOMMENDED P.C.B. LAYOUT



PDS. 1

PDS. 2

PDS. 3

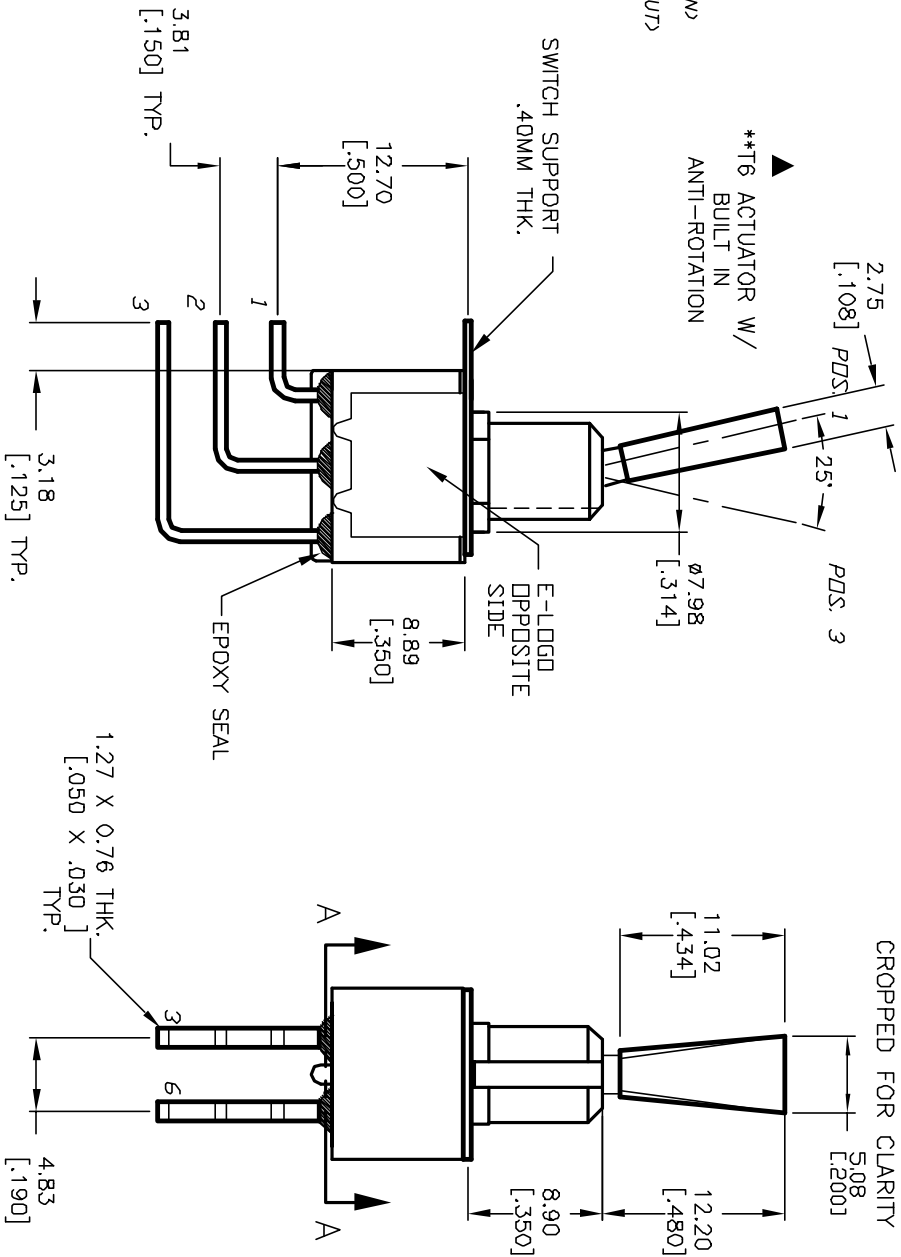
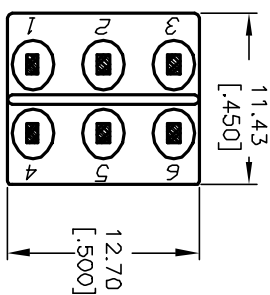
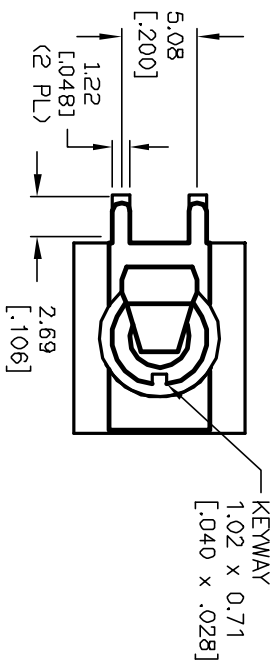
CIRCUIT: DPDT 3-WAY

NOTE: JUMPER PIN 3 TO PIN 5

SWITCH FUNCTION			
PDS. 1	PDS. 2	PDS. 3	
DN	DN	DN	
2-3-5-6	2-1-5-6	2-1-5-4	

NOTES:

1. ALL DIMENSIONS IN MM [INCH]
2. GENERAL TOLERANCE: X.XX=±0.4 X.XX=±0.25
3. TERMINAL NUMBERS FOR REF ONLY
4. RATING: 5A @120VAC OR 28VDC; 2A @250VAC
5. FIXED TERM. & MOVING CONTACT: COPPER ALLOY w/Silver plate.
6. ELECTRIC LIFE: 50,000 make-and-break cycles at full load.
7. INSULATION RESISTANCE: 1,000 Mega-ohm min.
8. DIELECTRIC STRENGTH: 1,000 V RMS @sea level.
9. OPERATING TEMP.: -30°C to +85°C



REV.	ECN NO.	DESCRIPTION	DATE	CHKD
A	12088	RELEASED FOR PRODUCTION	4/25/02	CB

TITLE	SCALE	DATE	DR	DWG	REV
100 DP-6 T6 B12 M7 Q E	2:1	4/25/02	CB	T126021	A

**E-SWITCH®**

THE INFORMATION CONTAINED IN THIS DOCUMENT IS PROPRIETARY TO E-SWITCH AND IS NOT TO BE COPIED OR TRANSMITTED