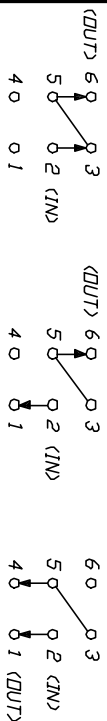


RECOMMENDED P.C.B. LAYOUT



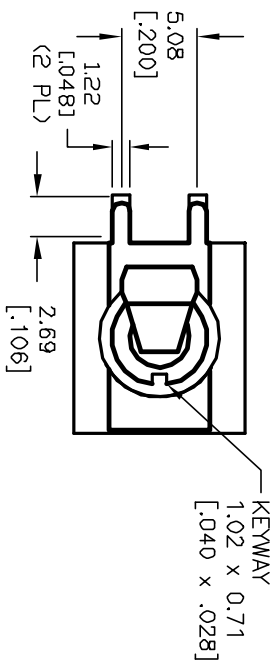
CIRCUIT: DPDT 3-WAY

NOTE: JUMPER PIN 3 TO PIN 5

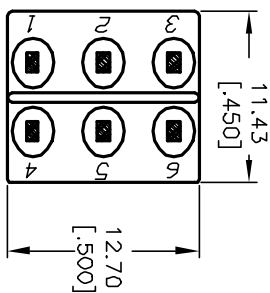
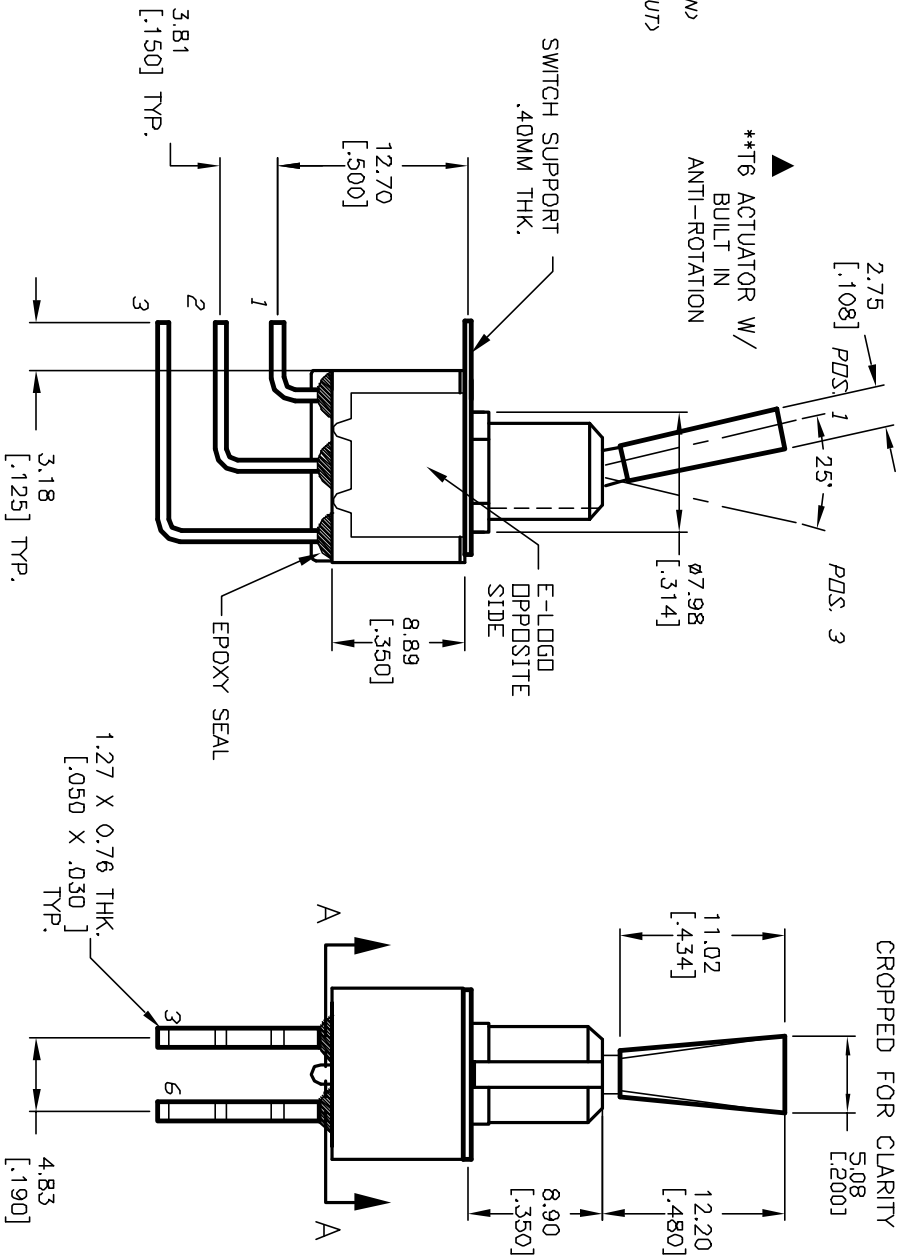
SWITCH FUNCTION			
PDS. 1	PDS. 2	PDS. 3	
2-3-5-6	2-1-5-6	2-1-5-4	

NOTES:

1. ALL DIMENSIONS IN MM [INCH]
2. GENERAL TOLERANCE: X.X=±0.4 X.XX=±0.25
3. TERMINAL NUMBERS FOR REF ONLY
4. RATING: 0.4V @20V AC or DC
5. FIXED TERM. & MOVING CONTACT:
COPPER ALLOY w/Gold plate over
Nickel plate.
6. ELECTRIC LIFE: 50,000 make-and-break cycles at full load.
7. INSULATION RESISTANCE: 1,000 Mega-ohm min.
8. DIELECTRIC STRENGTH: 1,000 V RMS @sea level.
9. OPERATING TEMP.: -30°C to +85°C



▲ **T6 ACTUATOR W/ BUILT IN ANTI-ROTATION



E-SWITCH®

REV.	ECN NO.	DESCRIPTION	DATE	CHKD	SCALE	DATE	DR	DWG	REV
A	12088	RELEASED FOR PRODUCTION	5/2/02	CB	2:1	5/2/02	CB	T126022	A

TITLE: 100 DP-6 T6 B12 M7 R E (GOLD CONTACTS)

THE INFORMATION CONTAINED IN THIS DOCUMENT IS PROPRIETARY TO E-SWITCH AND IS NOT TO BE COPIED OR TRANSMITTED.