

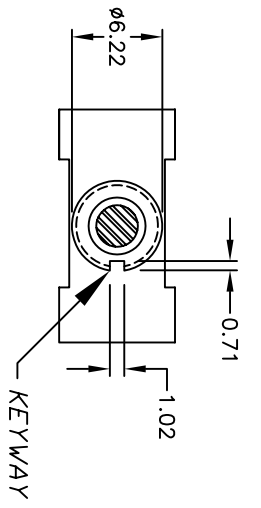
RECOMMENDED P.C.B. LAYOUT

CIRCUIT: SPDT

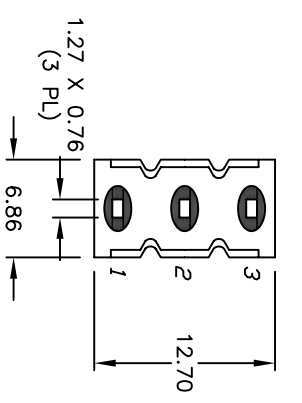
SWITCH FUNCTION			
PDS. 1	PDS. 2	PDS. 3	
DN	DN	DN	
DN	DN	DN	
2-3	OPEN	2-1	

NOTES:

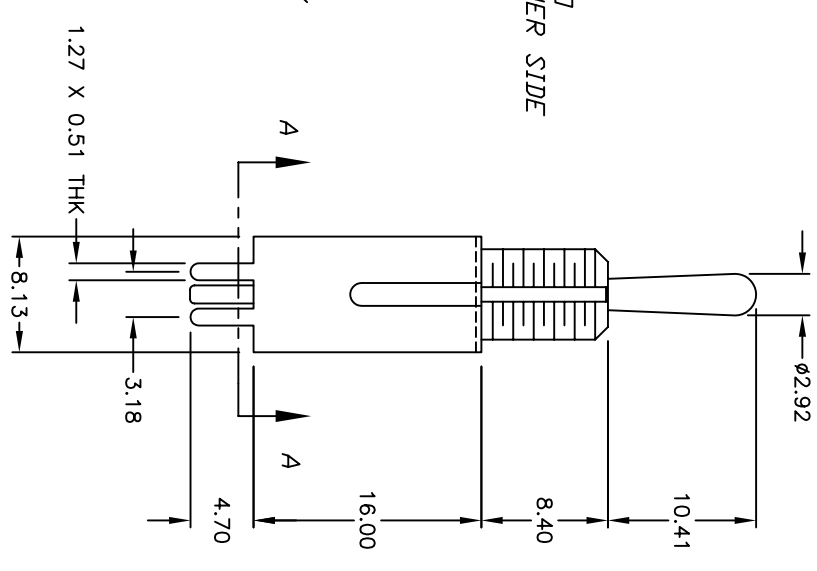
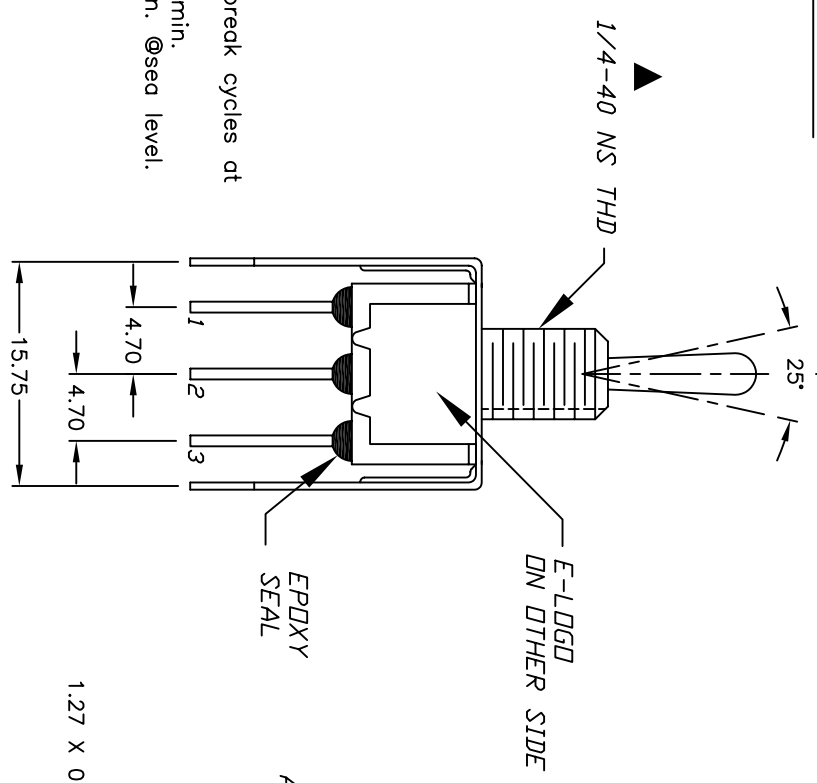
1. ALL DIMENSIONS IN MM
2. GENERAL TOLERANCE: X.X=±0.4  
X.XX=±0.25
3. TERM. NOS. FOR REF. ONLY
4. RATING: 5A @120VAC OR 28VDC  
2A @250VAC w/Resistive loads
5. FIXED TERM. & MOVING CONTACT:  
Copper alloy w/SILVER plate
6. ELECTRICAL LIFE: 50,000 make-and-break cycles at full load.
7. INSULATION RESISTANCE: 1000M ohm min.
8. DIELECTRIC STRENGTH: 1000V RMS min. @sea level.
9. OPERATING TEMP.: -30°C to +85°C
10. 2002/95/EC (ROHS) COMPLIANT



PDS. 1 | PDS. 2 | PDS. 3



VIEW A-A



REV.	ECN NO.	DESCRIPTION	DATE	CHKD
C	15538	DIM FROM 8.89 TO 8.40	11/16/05	PH
B	15491	ADD RSHS NOTE	11/2/05	PH
A	12630	RELEASED FOR PRODUCTION	12/12/02	CB

DIM FROM 8.89 TO 8.40		11/16/05		PH	
ADD RSHS NOTE		11/2/05		PH	
RELEASED FOR PRODUCTION		12/12/02		CB	
REV.	ECN NO.	DESCRIPTION	DATE	CHKD	SCALE
C	15538	DIM FROM 8.89 TO 8.40	11/16/05	PH	2:1
B	15491	ADD RSHS NOTE	11/2/05	PH	
A	12630	RELEASED FOR PRODUCTION	12/12/02	CB	
THE INFORMATION CONTAINED IN THIS DOCUMENT IS PROPRIETARY TO E-SWITCH AND IS NOT TO BE COPIED OR TRANSFERRED					
TITLE		DATE		DR	
100 SP-1 T1 B1 VS3 Q E		12/5/02		CB	
SCALE		DATE		DWG	
2:1		12/5/02		T110021	
REV		DATE		DR	
C		12/5/02		CB	

**E-SWITCH®**