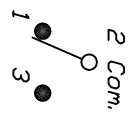
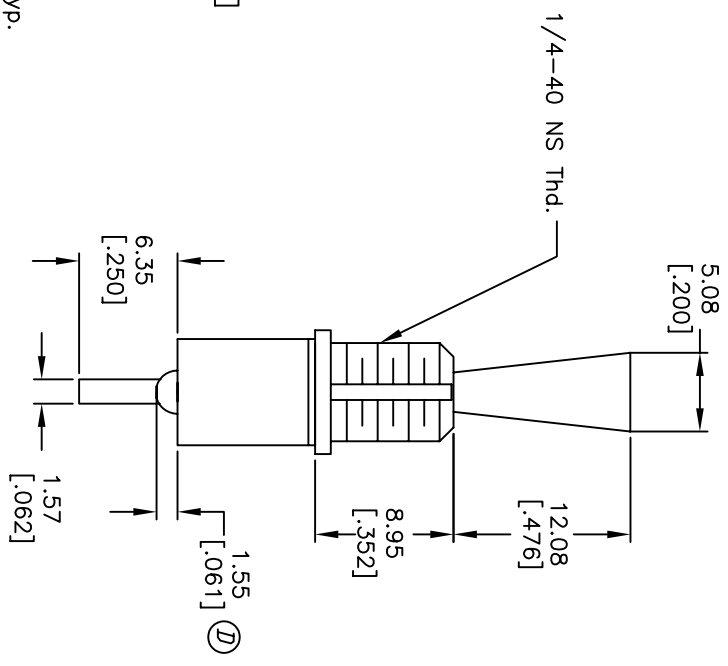
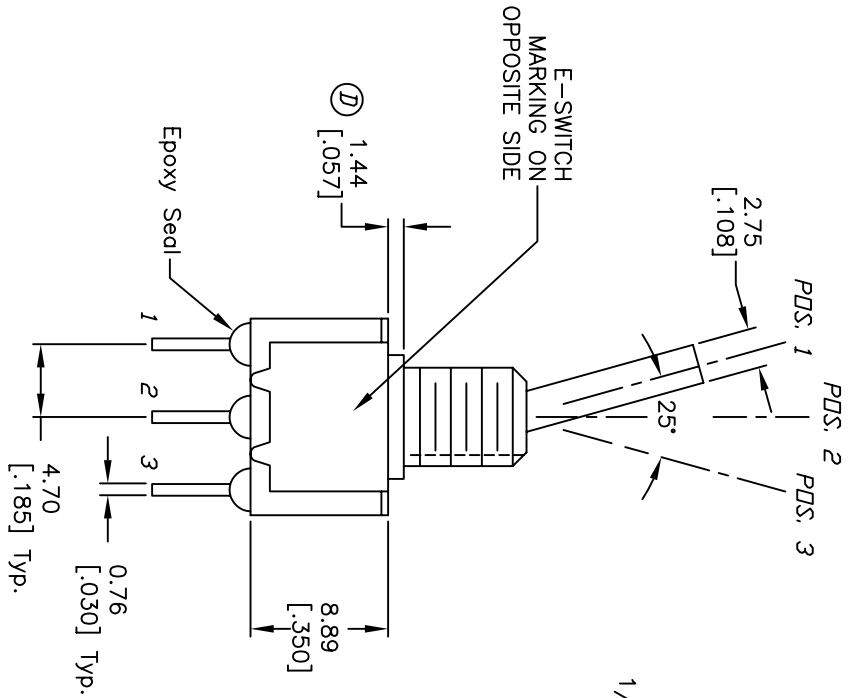


RECOMMENDED P.C.B. LAYOUT



CIRCUIT: SPDT
CONTACT CONFIGURATION

SWITCH FUNCTION			
PDS. 1	PDS. 2	PDS. 3	
DN	NONE	DN	
2-3	OPEN	2-1	



NOTES:

1. ALL DIMENSIONS IN MM [INCH]
2. GENERAL TOLERANCE: X.X=±0.4
X.XX=±0.25
3. TERM. NOS. FOR REF. ONLY
4. RATING: 5A @120VAC or 28VDC; 2A @250VAC.
5. 2002/95/EC (ROHS) COMPLIANT

REV.	ECN No.	DESCRIPTION	DATE	CHKD
D	15526	DIMS FROM 1.02, 1.91	11/11/05	PH
C	15483	ADD ROHS NOTE	11/11/05	PH
B	11341	CHANGED PART DESCRIPTION	3/27/01	CB

E-SWITCH®

100 SP-1 T6 B11 M3 Q E

TITLE

SCALE: 2:1 DATE: 3/27/01 DR: CB DWG: T110010 REV: D

THE INFORMATION CONTAINED IN THIS DOCUMENT IS PROPRIETARY TO E-SWITCH AND IS NOT TO BE COPIED OR TRANSFERRED