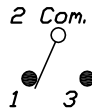
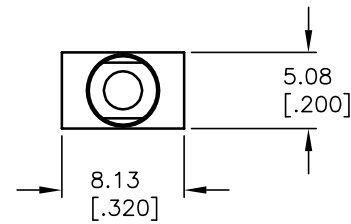


RECOMMENDED PCB LAYOUT



CIRCUIT: SPDT  
CONTACT CONFIGURATION

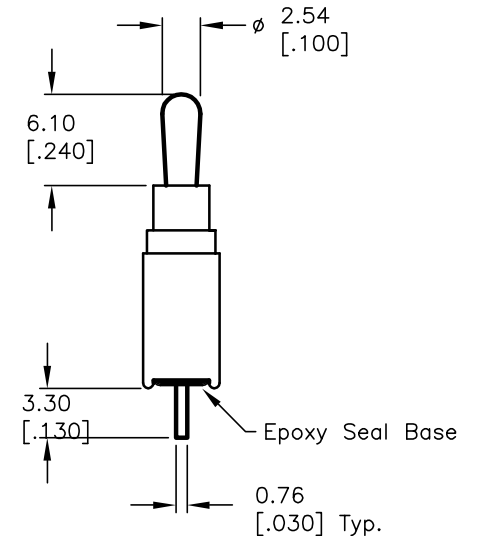
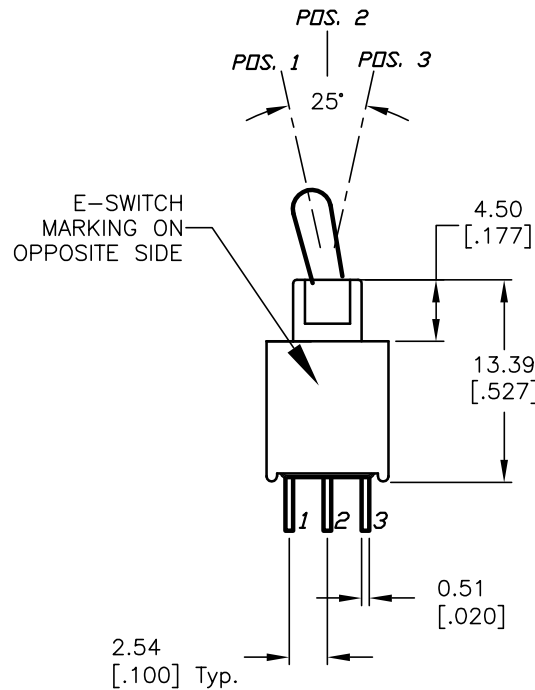
SWITCH FUNCTION		
PDS. 1	PDS. 2	PDS. 3
<DN>	NONE	DN
2-3	OPEN	2-1

ⓑ

< >=Momentary

NOTES:

1. ALL DIMENSIONS IN MM [INCH]
2. GENERAL TOLERANCE: X.X=±0.4  
X.XX=±0.25
3. TERMINAL NUMBERS FOR REF ONLY
4. RATING: 0.4VA @20 VAC or DC max.
- ▲ 5. FIXED TERM. & MOVING CONTACT:  
Copper ALLOY W/GOLD plate over Nickel plate.
6. ELECTRIC LIFE: 50,000 make-and-break cycles at full load.
7. INSULATION RESISTANCE: 1,000 Mega-ohm min.
8. DIELECTRIC STRENGTH: 1,000 V RMS @sea level.
9. OPERATING TEMP.: -30°C to +85°C



**E-SWITCH®**

TITLE		200A WMSP-2 T2 A1 M2 R E			
SCALE	DATE	DR	DWG	REV	
2:1	--	--	T201211	B	

B	13412	SWITCH FUNCTION	8/29/03	AR
A	12735	RELEASED FOR PRODUCTION	1/15/03	CB
REV.	ECN No.	DESCRIPTION	DATE	CHKD
THE INFORMATION CONTAINED IN THIS DOCUMENT IS PROPRIETARY TO E-SWITCH AND IS NOT TO BE COPIED OR TRANSFERRED				