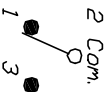


RECOMMENDED PCB LAYOUT



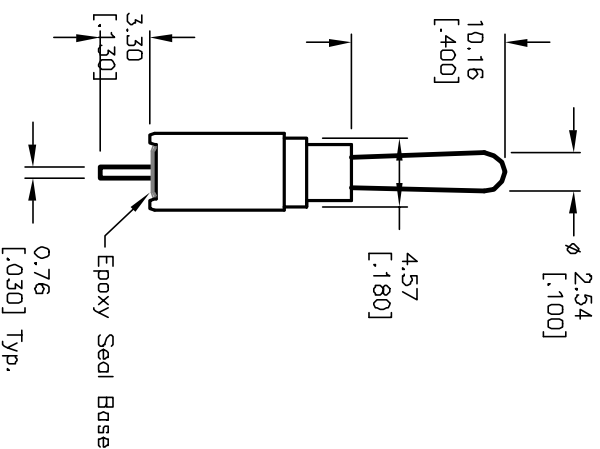
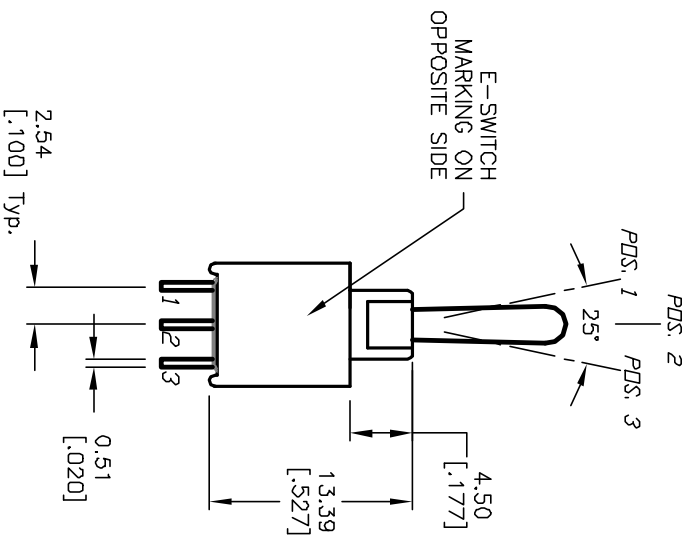
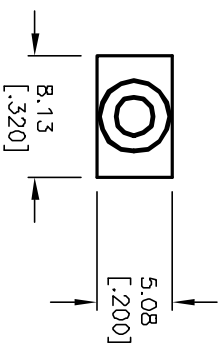
CIRCUIT: SPDT CONTACT CONFIGURATION

SWITCH FUNCTION		
PDS. 1	PDS. 2	PDS. 3
<DN>	DFFF	<DN>
2-3	DPEN	2-1

NOTES:

1. ALL DIMENSIONS IN MM [INCH]
2. GENERAL TOLERANCE: X.X=±0.4 X.XX=±0.25
3. TERMINAL NUMBERS FOR REF ONLY
4. RATING: 3A @120V AC or 28VDC; 1A @250VAC;
5. FIXED TERM. & MOVING CONTACT: Copper ALLOY W/Silver plate.
6. ELECTRIC LIFE: 50,000 make-and-break cycles at full load.
7. INSULATION RESISTANCE: 1,000 Mega-ohm min.
8. DIELECTRIC STRENGTH: 1,000 V RMS @sea level.
9. OPERATING TEMP.: -30°C to +85°C

( )=Momentary



**E-SWITCH®**

REV.	ECN NO.	DESCRIPTION	DATE	CHK'D
B	12200	REVISED FUNCTION CHART	5/31/02	CB
A	10762	REVISED AND REDRAWN	7/14/00	MM

TITLE	SCALE	DATE	DR	DWG	REV
2004 WMSP-4 T1 A1 M2 Q E	2:1	7/14/00	MM	T201380	B

THE INFORMATION CONTAINED IN THIS DOCUMENT IS PREPARED FOR E-SWITCH AND IS NOT TO BE COPIED OR TRANSMITTED