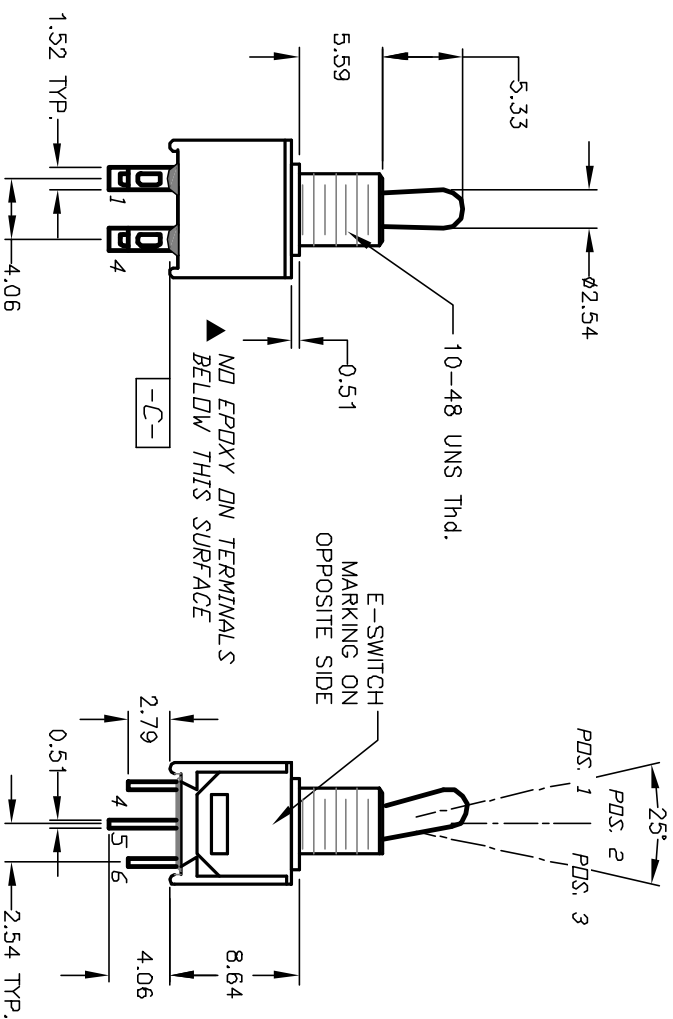
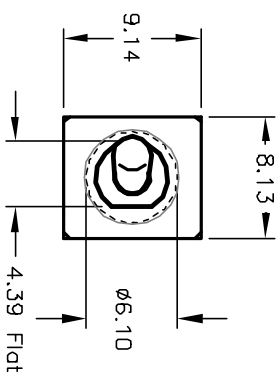


CIRCUIT: DPDT
CONTACT CONFIGURATION

SWITCH FUNCTION		
POS. 1	POS. 2	POS. 3
DN	NDNE	DN
2-3,5-6	DPEN	2-1,5-4

- NOTES:
1. ALL DIMENSIONS IN MM
 2. GENERAL TOLERANCE: X.X=±0.4
X.XX=±0.25
 3. TERM. NOS. FOR REF. ONLY
 4. CONTACT RATING: 3A @120VAC OR 28VDC
1A @250VAC.
 5. FIXED TERMINAL & MOVING CONTACT:
COPPER ALLOY W/ SILVER PLATE.
 6. ELECTRIC LIFE: 30,000 make-and-break cycles
at full load.
 7. INSULATION RESISTANCE: 1,000 M ohm min.
 8. DIELECTRIC STRENGTH: 1,000 V RMS @sea level.
 9. OPERATING TEMP.: -30°C to 85°C
 10. LOCK NUT AND WASHER SUPPLIED.



E-SWITCH®

REV.	ECN NO.	DESCRIPTION	DATE	CHKD
B	11498	REVISED AND REDRAWN	10/14/02	CB

TITLE	SCALE	DATE	DR	DWG	REV
200 MDP-1 T2 B1 M1 Q E	2:1	--	--	T221026	B

THE INFORMATION CONTAINED IN THIS DOCUMENT IS PROPRIETARY TO E-SWITCH AND IS NOT TO BE COPIED OR TRANSMITTED