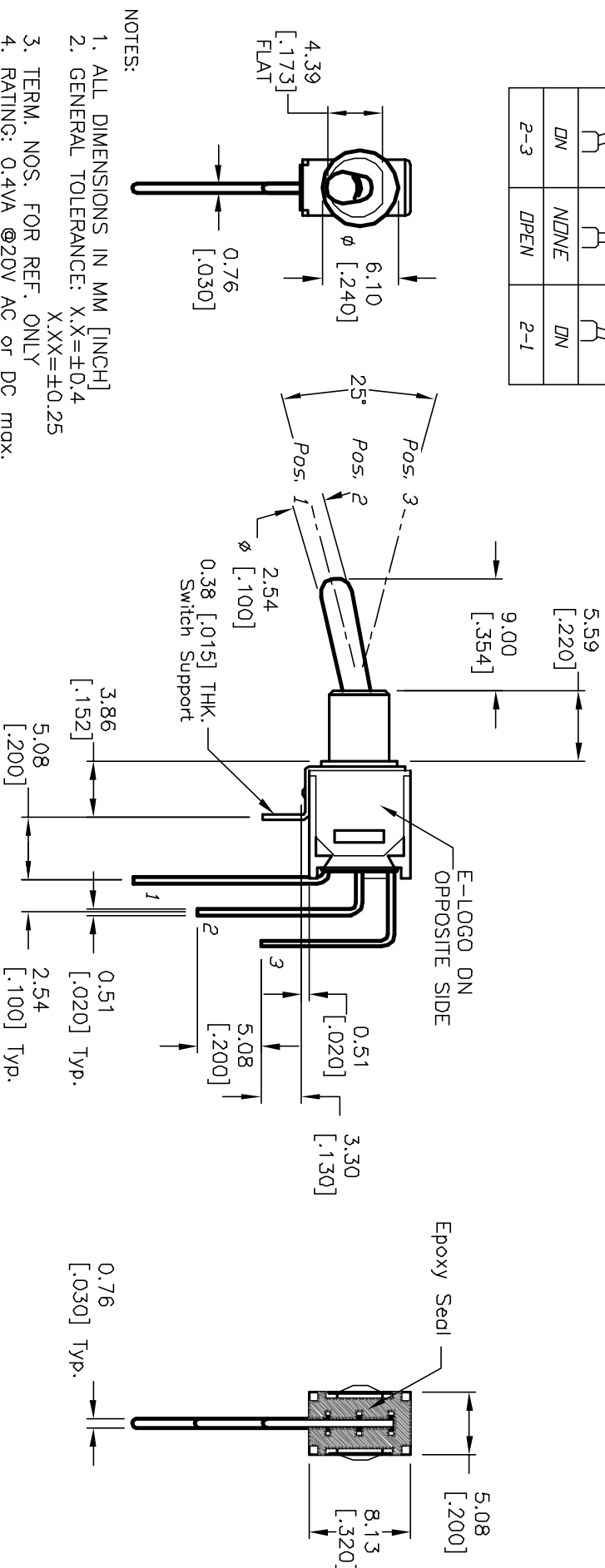
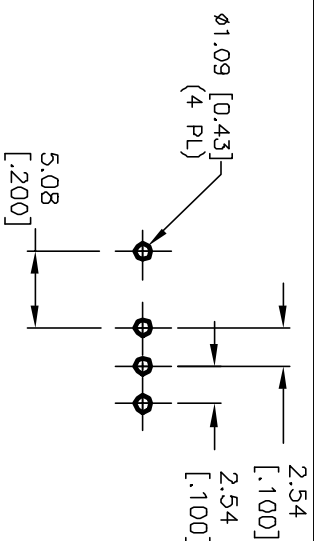


CIRCUIT: SPDT
CONTACT CONFIGURATION

| SWITCH FUNCTION | | |
|-----------------|--------|--------|
| POS. 1 | POS. 2 | POS. 3 |
| | | |
| DN | NZ/NF | DN |
| 2-3 | DPEN | 2-1 |



NOTES:

1. ALL DIMENSIONS IN MM [INCH]
2. GENERAL TOLERANCE: X.X=±0.4 X.XX=±0.25
3. TERM. NOS. FOR REF. ONLY
4. RATING: 0.4VA @20V AC or DC max.
5. FIXED TERM. MOVING CONTACT:
Copper Alloy w/Gold plate
over Nickel plate
6. ELECTRICAL LIFE: 30,000 make-and-break cycle at full load.
7. DIELECTRIC STRENGTH: 1,000 V RMS @sea level.
8. OPERATING TEMP.: -30°C to 85°C
9. ▲ DESIGNATE MAJOR FEATURE:

| | | | | |
|------|---------|-------------|----------|-------|
| A | 12508 | RELEASED | 10/23/02 | CJB |
| REV. | ECN NO. | DESCRIPTION | DATE | CHK'D |

| | | | | | |
|--|-------|----------|-----|---------|-----|
| TITLE | SCALE | DATE | DR | DWG | REV |
| 200 MSP-1 T1 B2 M7 R E (GOLD CONTACTS) | 2:1 | 10/23/02 | CJB | T211098 | A |

E-SWITCH®

THE INFORMATION CONTAINED IN THIS DOCUMENT IS PREPARED FOR THE SWITCH AND IS NOT TO BE COPIED OR TRANSMITTED