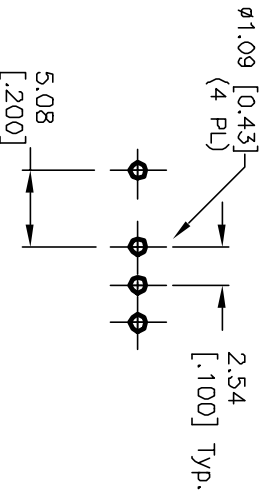
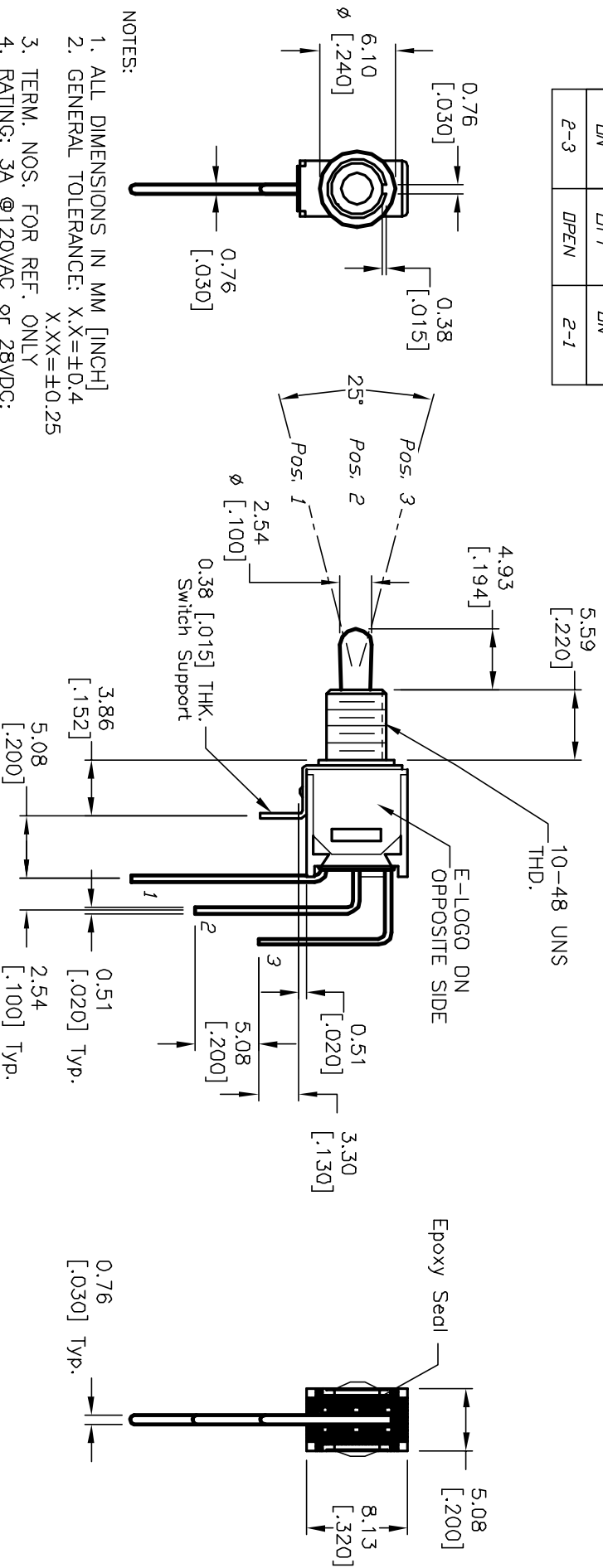


CIRCUIT: SPDT  
CONTACT CONFIGURATION

SWITCH FUNCTION		
POS. 1	POS. 2	POS. 3
DN	DIFF	DN
2-3	OPEN	2-1



- NOTES:
1. ALL DIMENSIONS IN MM [INCH]
  2. GENERAL TOLERANCE: X.X=±0.4 X.XX=±0.25
  3. TERM. NOS. FOR REF. ONLY
  4. RATING: 3A @120VAC or 28VDC: 1A @250VAC
  5. FIXED TERM. MOVING CONTACT: Copper Alloy w/Silver plating
  6. ELECTRICAL LIFE: 30,000 make-and-break cycle at full load.
  7. DIELECTRIC STRENGTH: 1,000 V RMS @sea level.
  8. OPERATING TEMP.: -30°C to 85°C
  9. ▲ DESIGNATE MAJOR FEATURE:



REVISED AND REDRAWN		DATE		SCALE		DATE		DR		DWG		REV	
B	12110	5/3/02	CJB	2:1	5/3/02	CJB	T212009	B					
TITLE: 200 MSP-3 T2 B3 M7 Q E													
THE INFORMATION CONTAINED IN THIS DOCUMENT IS PRELIMINARY AND IS NOT TO BE COPIED OR TRANSMITTED													