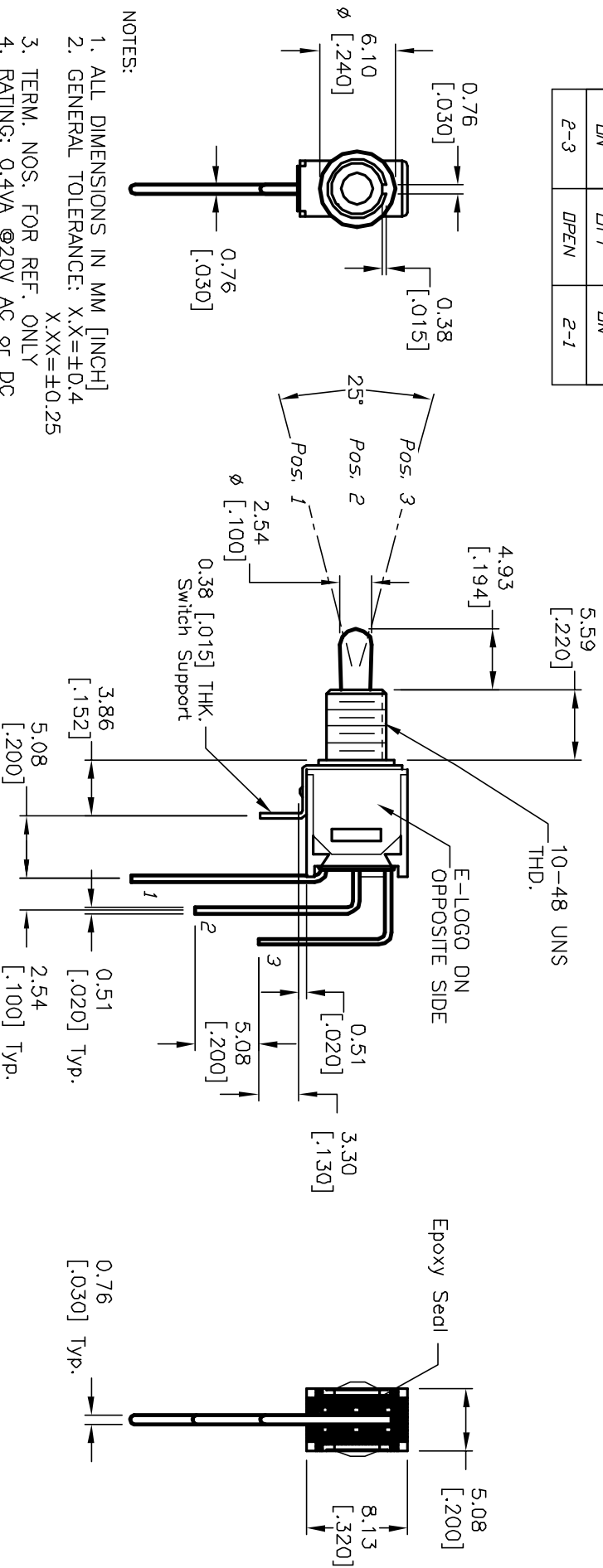


CIRCUIT: SPDT
CONTACT CONFIGURATION

SWITCH FUNCTION		
POS. 1	POS. 2	POS. 3
DN	DIFF	DN
2-3	OPEN	2-1



RECOMMENDED P.C.B. LAYOUT

NOTES:

1. ALL DIMENSIONS IN MM [INCH]
2. GENERAL TOLERANCE: X.X=±0.4 X.XX=±0.25
3. TERM. NOS. FOR REF. ONLY
4. RATING: 0.4VA @20V AC OR DC
5. FIXED TERM. MOVING CONTACT:
Copper Alloy w/GOLD plate over Nickel plate.
6. ELECTRICAL LIFE: 30,000 make-and-break cycle at full load.
7. DIELECTRIC STRENGTH: 1,000 V RMS @sea level.
8. OPERATING TEMP.: -30°C to 85°C
9. ▲ DESIGNATE MAJOR FEATURE:

REV. B	ECN NO. 12110	REVISION AND REDRAWN	5/3/02	CJB	TITLE	200 MSP-3 T2 B3 M7 R E	SCALE	2:1	DATE	5/3/02	DR	CJB	DWG	T212010	REV	B
		DESCRIPTION	DATE	CHKD	<p>E-SWITCH® (GOLD CONTACTS)</p>											
<p>THE INFORMATION CONTAINED IN THIS DOCUMENT IS PROPRIETARY TO E-SWITCH AND IS NOT TO BE COPIED OR TRANSMITTED</p>																