

FT

HYPER-MINIATURE TOGGLE SWITCHES

■ FEATURES

- It is of hyper-compact type. The volumetric ratio is half that of the conventional Series A.
- Immersion cleaning is possible after soldering.
- Terminal mounting is at 0.1-inch pitches.
- Independent detent mechanism provides light feel operability.
- Regarding the contact reliability, a long-term stability is assured by the clip contact.

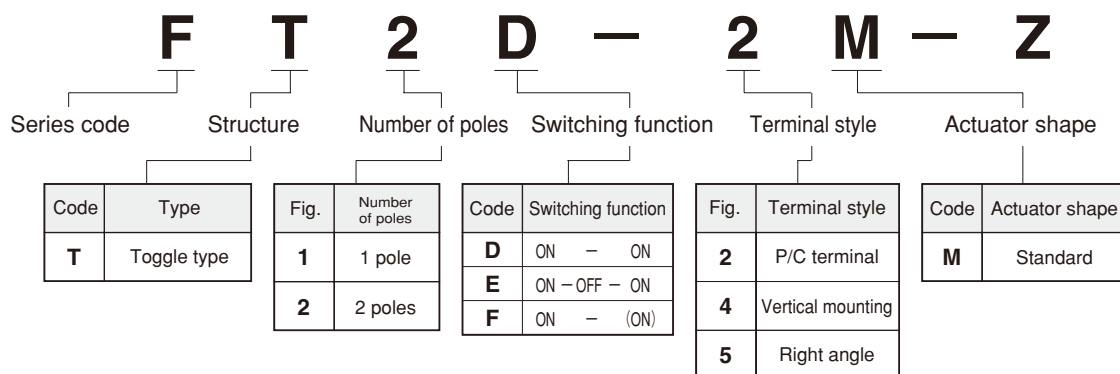
RoHS compliant



■ SPECIFICATIONS

Rating	Max.	28VDC 0.4VA max.
	Min.	1 μ A 20mVDC
Initial contact resistance	100m Ω max. (1.5mA 200 μ VAC)	
Dielectric strength	250VAC 1 minute	
Insulation resistance	500M Ω min. (250VDC)	
Electrical life	10,000 cycles at max. rating, 50,000 cycles at min. rating.(D,E type) 30,000 cycles at min. rating.(F type)	
Operating temperature range	-40~+85°C	
Storage temperature range	-40~+85°C	

■ PART NUMBERING



■ TABLE OF PART NUMBERS

Number of poles	Switching function	P/C terminal	Vertical mounting	Right angle
1	ON - ON	FT1D-2M-Z	FT1D-4M-Z	FT1D-5M-Z
	ON - OFF - ON	FT1E-2M-Z	FT1E-4M-Z	☆FT1E-5M-Z
	ON - (ON)	☆FT1F-2M-Z	★FT1F-4M-Z	FT1F-5M-Z
2	ON - ON	FT2D-2M-Z	FT2D-4M-Z	FT2D-5M-Z
	ON - OFF - ON	FT2E-2M-Z	★FT2E-4M-Z	★FT2E-5M-Z
	ON - (ON)	☆FT2F-2M-Z	★FT2F-4M-Z	☆FT2F-5M-Z

☆ : Quasi-standard items.

★ : Made-to-order items.

※Please contact us if you can't find your preferable combination in the table of part numbers.

FT

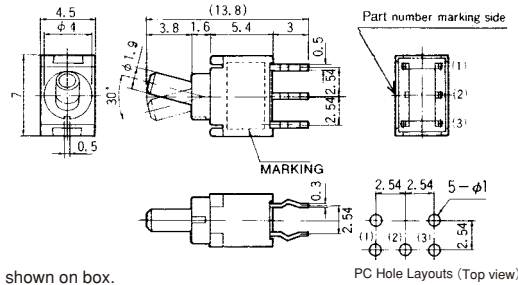
HYPER-MINIATURE TOGGLE SWITCHES

OUTLINE DIMENSIONS

SPDT PC



Terminal number not shown on box.

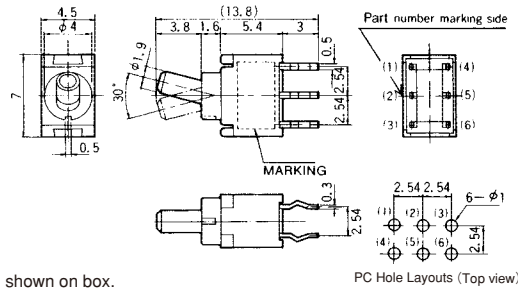


Switching function Part No.	Viewed from part No. marking side		
FT1D-2M-Z	ON	—	ON
FT1E-2M-Z	ON	OFF	ON
☆FT1F-2M-Z	(ON)	—	ON
Connecting terminals	2—1	—	2—3

DPDT PC



Terminal number not shown on box.

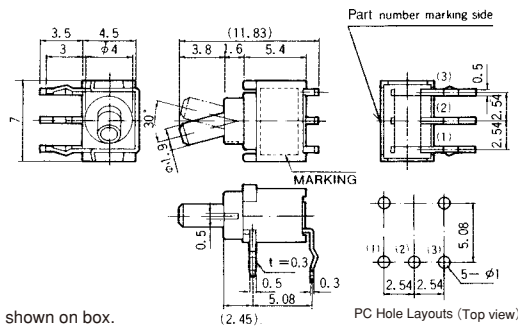


Switching function Part No.	Viewed from part No. marking side		
FT2D-2M-Z	ON	—	ON
FT2E-2M-Z	ON	OFF	ON
☆FT2F-2M-Z	(ON)	—	ON
Connecting terminals	2—1 5—4	—	2—3 5—6

SPDT R/A



Terminal number not shown on box.

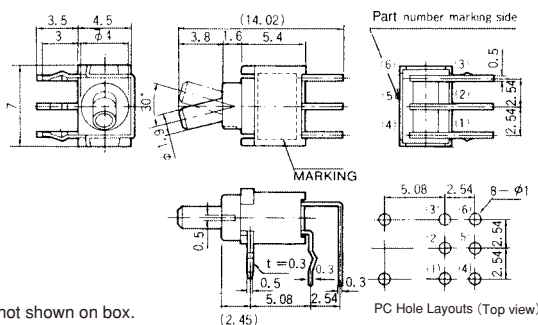


Switching function Part No.	Viewed from part No. marking side		
FT1D-5M-Z	ON	—	ON
☆FT1E-5M-Z	ON	OFF	ON
FT1F-5M-Z	ON	—	(ON)
Connecting terminals	2—3	—	2—1

DPDT R/A



Terminal number not shown on box.



Switching function Part No.	Viewed from part No. marking side		
FT2D-5M-Z	ON	—	ON
★FT2E-5M-Z	ON	OFF	ON
☆FT2F-5M-Z	ON	—	(ON)
Connecting terminals	2—3 5—6	—	2—1 5—4

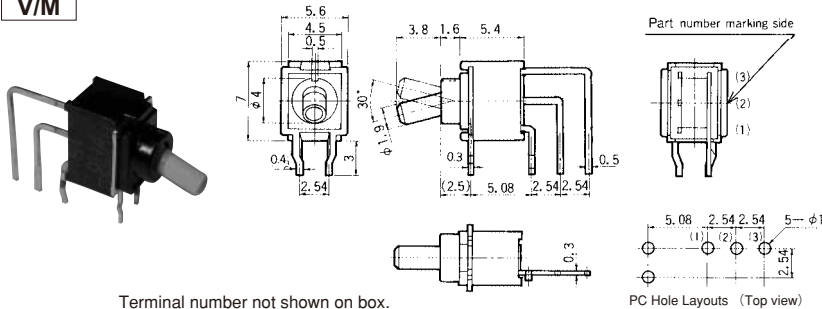
(ON) : Momentary.
☆ : Quasi-standard items
★ : Made-to-order items.

FT HYPER-MINIATURE TOGGLE SWITCHES

OUTLINE DIMENSIONS

SPDT

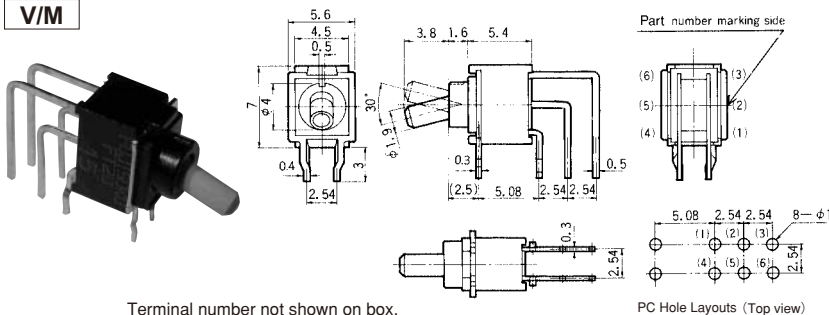
V/M



Switching function Part No.	Viewed from part No. marking side		
FT1D-4M-Z	ON	—	ON
FT1E-4M-Z	ON	OFF	ON
★FT1F-4M-Z	(ON)	—	ON
Connecting terminals	2—1	—	2—3

DPDT

V/M



Switching function Part No.	Viewed from part No. marking side		
FT2D-4M-Z	ON	—	ON
★FT2E-4M-Z	ON	OFF	ON
★FT2F-4M-Z	(ON)	—	ON
Connecting terminals	2—1 5—4	—	2—3 5—6

(ON) : Momentary.

★ : Made-to-order items.

SOLDERING

- (1) Hand soldering
Device : Solder iron.
380 °C Max. 3 sec. Max.
- (2) Auto soldering
Device : Wave or dip type
275 °C Max. 6 sec. Max.
Preheat should be within 80-120 °C, 120sec.
- (3) When soldering two or more terminals to the common land, use solder resist to solder them independently.

FLUX CLEANING

- (1) Solvent : Fluorine or Alcohol type.
- (2) Cleaning shall be made when terminal temperature falls to 90 °C or lower. Or, leave the switch at normal temperature for 5 minutes or longer, before cleaning.
- (3) Do not apply ultrasonic cleaning.

PACKAGING SPECIFICATIONS

