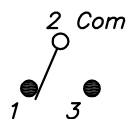


**RECOMMENDED PCB LAYOUT**

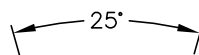
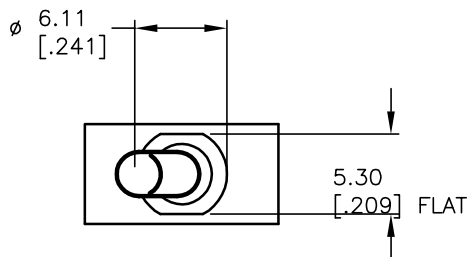


**CIRCUIT: SPDT**

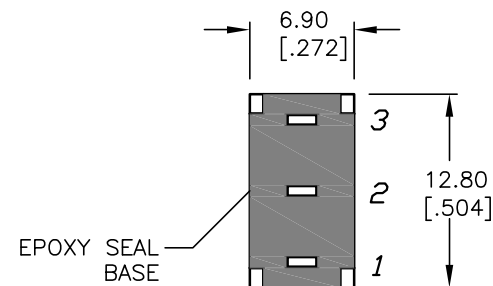
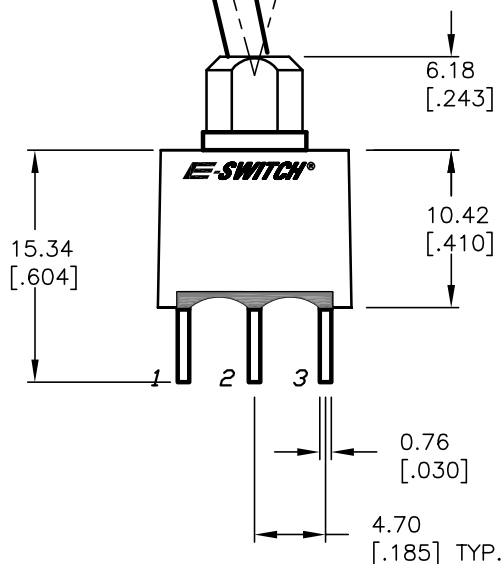
SWITCH FUNCTION		
POS. 1	POS. 2	POS. 3
(ON)	OFF	(ON)
2-3	OPEN	2-1

**NOTES:**

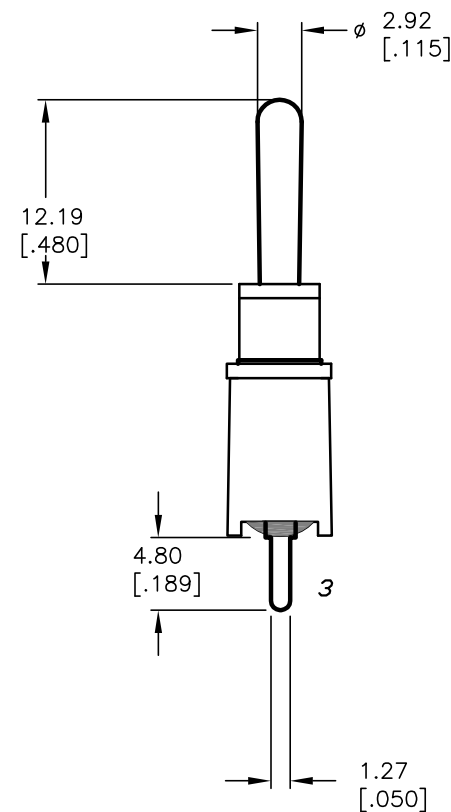
- ALL DIMENSIONS IN MM [INCH]
- GENERAL TOLERANCE: X.X=±0.4  
X.XX=±0.25
- TERMINAL NUMBERS FOR REF ONLY
- RATING: 0.4VA @20V AC OR DC max.
- FIXED TERM. & MOVING CONTACT:  
Copper Alloy w/Gold plate over Nickel plate
- ELECTRIC LIFE: 40,000 make-and-break cycles at full load.
- INSULATION RESISTANCE: 1,000 Mega-ohm min.
- DIELECTRIC STRENGTH: 1,000 V RMS @sea level.
- OPERATING TEMP.: -30°C to 85°C



POS. 1 POS. 3



**BOTTOM VIEW**



**E-SWITCH®**

TITLE					100AWSP4T1B4M2RE				
SCALE	2:1	DATE	11/19/03	DR	AR	DWG	T104000	REV	A

A	13614	RELEASED FOR PRODUCTION	11/19/03	AR
REV.	ECN No.	DESCRIPTION	DATE	CHKD
THE INFORMATION CONTAINED IN THIS DOCUMENT IS PROPRIETARY TO E-SWITCH AND IS NOT TO BE COPIED OR TRANSFERRED				