

*JST*

Hand crimping tool  
Type: WC-110

Features

Parallel action  
operation

Ratchet release

Easy readjustment  
of load

Contact locator with  
insulation-stop

Precisely ground  
profiles

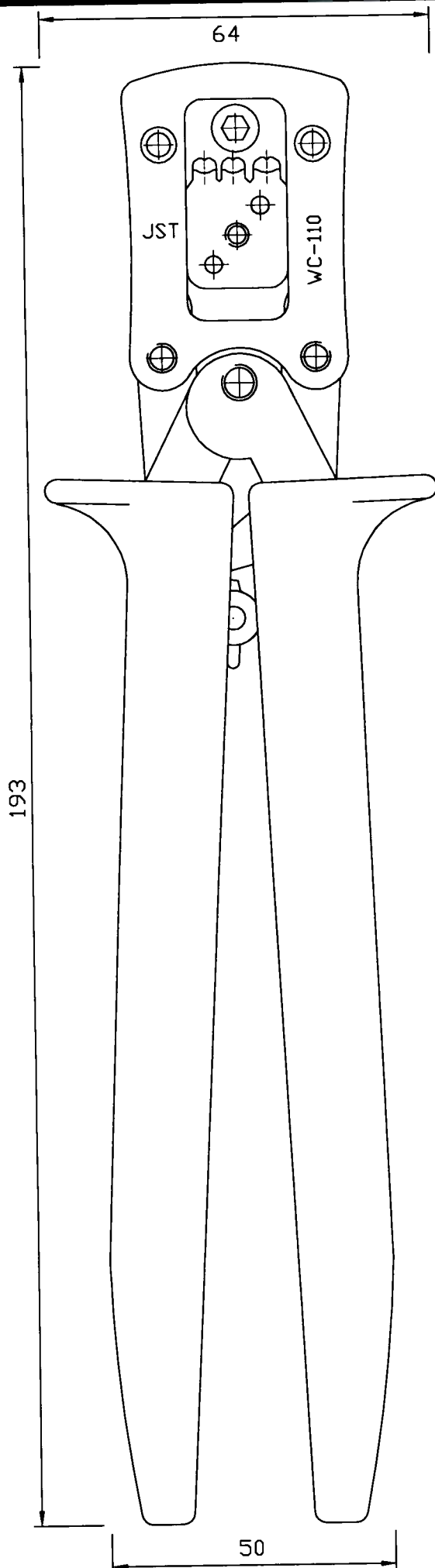
Ergonomic soft grips  
colour: green

Fully recyclable

Applicable terminal:  
( )XH-001T-P0.6

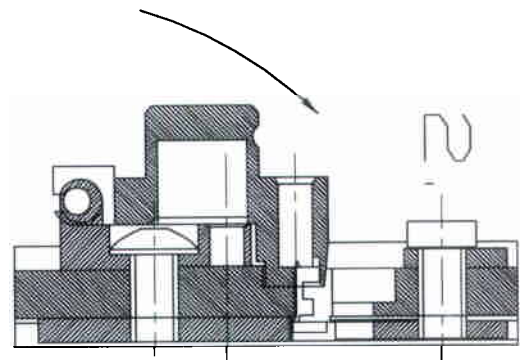
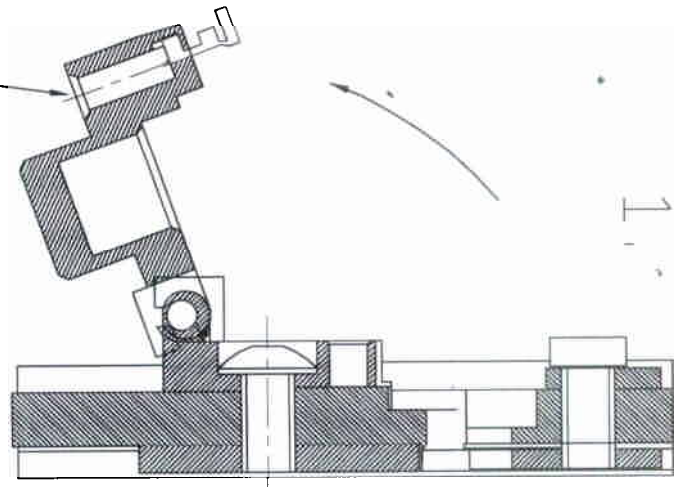
Cross section range:  
Profile 1: 28 AWG/26 AWG  
Profile 2: 24 AWG  
Profile 3: 22 AWG

Crimp height specification  
28 AWG - 0.60 - 0.65mm  
26 AWG - 0.65mm  
24 AWG - 0.70mm  
22 AWG - 0.75mm

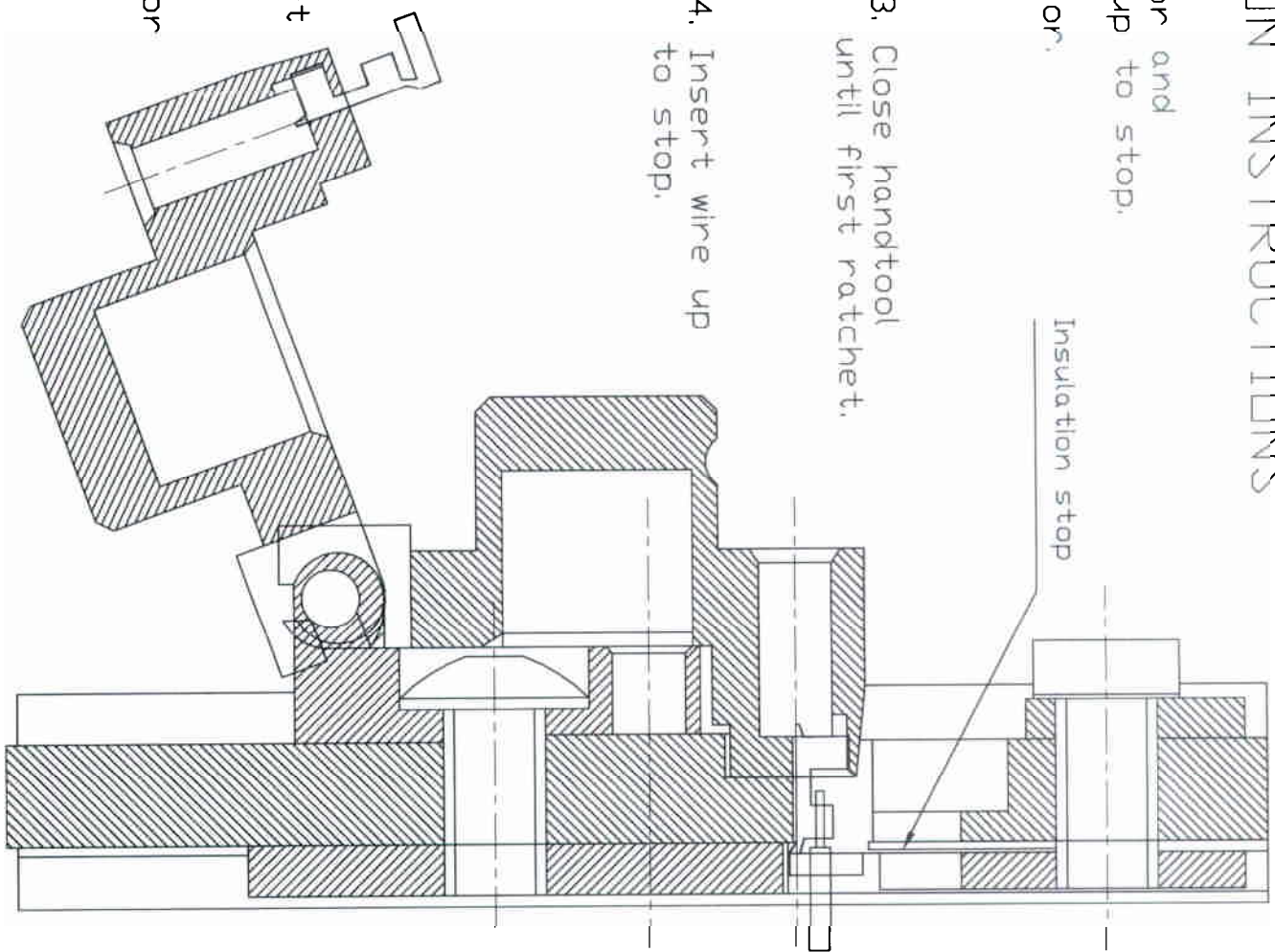


# OPERATION INSTRUCTIONS

1. Open flap locator and insert contact up to stop.
2. Close flap locator.



3. Close handtool until first ratchet.
4. Insert wire up to stop.



5. Close handtool until the ratchet releases.
6. Open flap locator and carefully remove the wire.

