

Hand Tool
63600-0478



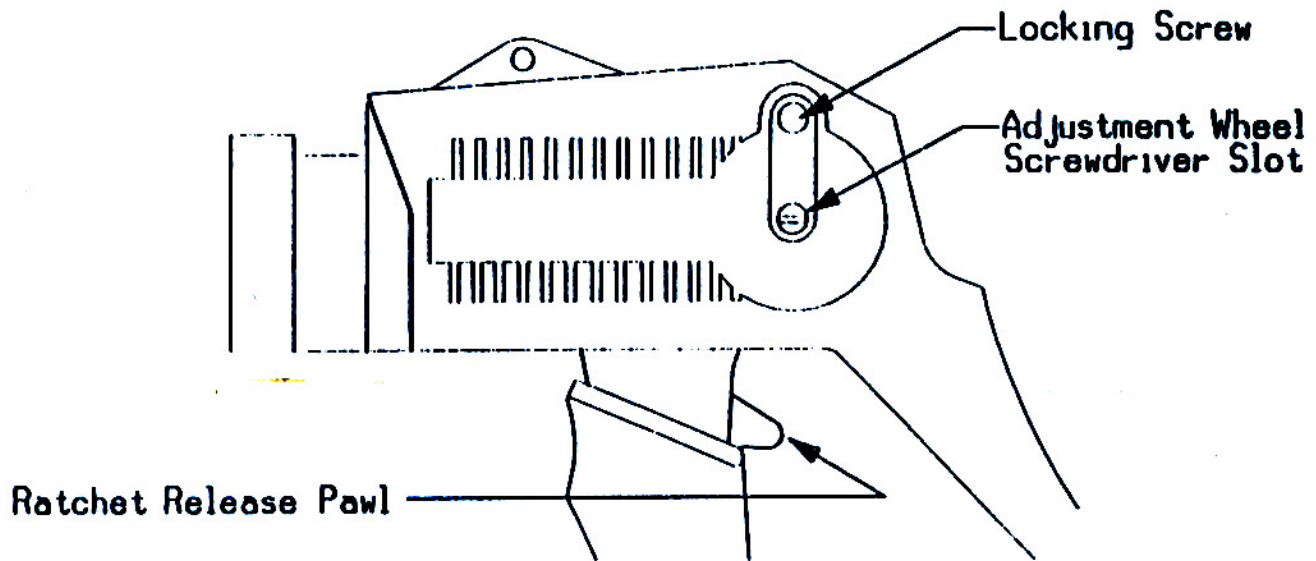


Figure 1

Adjustment of Hand Tool for Wire Insertion Depth

1. Using a 2mm hex key, loosen the Locking Screw $\frac{1}{2}$ to 1 turn, see figure 1.
2. Locate a flat screwdriver in the Adjustment Wheel Screwdriver Slot.
3. To increase the insertion depth (increase the extension of the handtool push rod), turn the Adjustment Wheel counter-clockwise.
4. To decrease the insertion depth (decrease the extension of the handtool push rod), turn the Adjustment Wheel clockwise.
5. Tighten Locking Screw.

TABLE 1 - CHANGEHEAD LIST

ORDER NO.	CONNECTOR SERIES	CONNECTOR DESCRIPTION
11-39-0273	30452	2.0mm
69008-0290	42219, 42254	2.5mm "SPOX"
	90650, 90652	2.5mm "User Friendly"
11-21-5197	7720, 7720s, 7745, 8951, 40555, 40775, 40798, 40922	2.50mm (.098") and 2.54mm (.100")
11-21-8365	40555	2.54mm (.100)
11-21-5196	7674, 7675, 8633, 40119, 40749, 40791, 40915, 41101	3.94mm (.156")
69008-0270	7823, 7933, 7935	5.00mm (.197") and 5.08mm (.200")
62100-0700	70400, 70475, 90187	2.54mm (.100")
62100-0300	71178	2.54mm (.100")
11-39-0303	71690, 71694	4.19mm (.165")
62100-0400	7674, 7675	3.96mm (.156")
Discrete Wire, Mass Terminate, No Index		
11-21-9756	70156	5.08mm (.200")
11-32-6027	71156	5.08mm (.200")
Ribbon Cable, Mass Terminate, No Index (All changeheads for ribbon cable require the Power Adaptor and Table Clamp, Order No. 11-31-3337)		
11-31-4652/ 11-31-3337	5320, 40312, 70625, 71247	1.27mm (.050") MX50/OF50
11-31-3339/ 11-31-3337	70121, 71898	1.27mm (.050") MX50
11-32-5759/ 11-31-3337	87259	.635mm (.025") Mill-Grid
11-31-3340	Cable Shear	

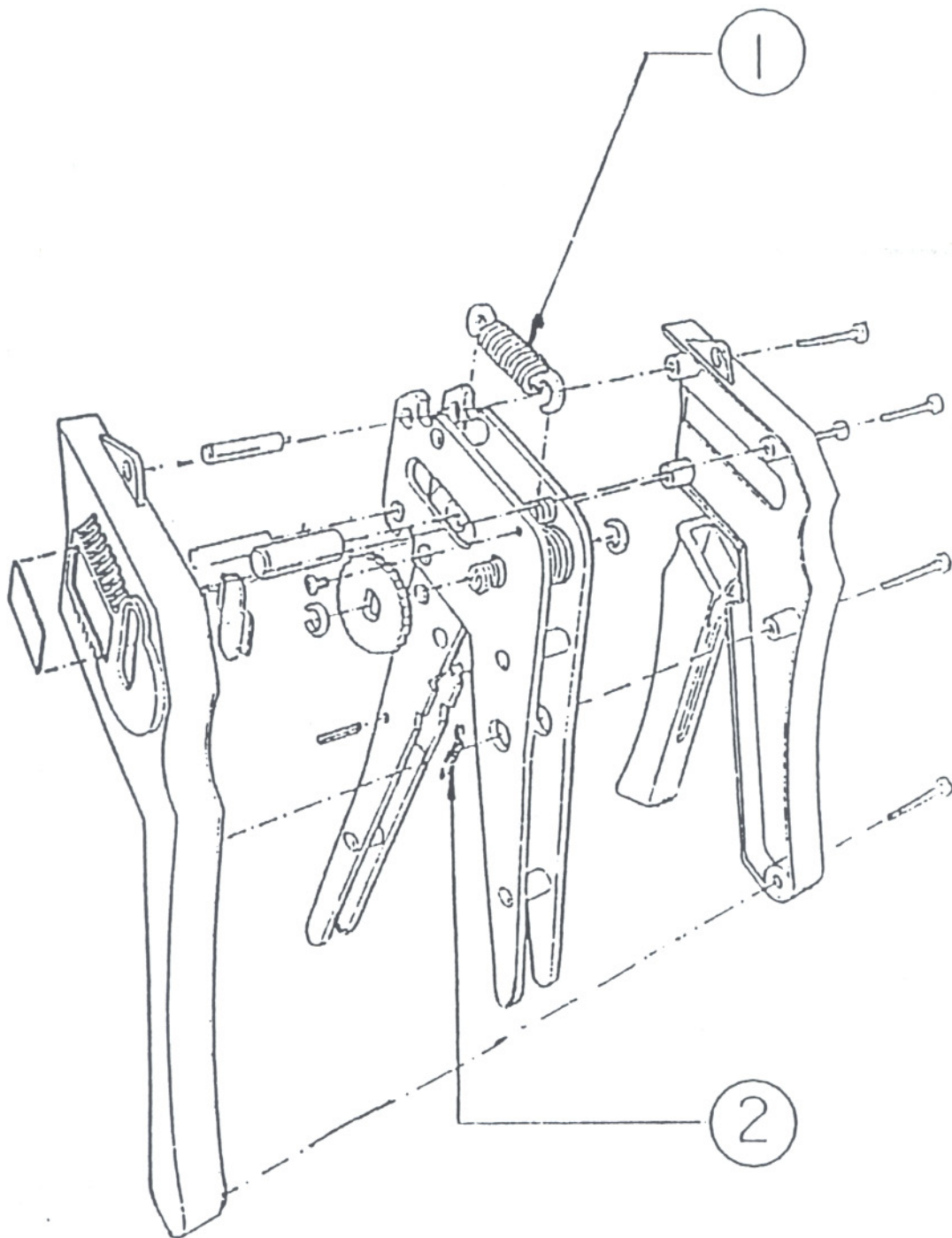
Parts List

Item No.	Qty.	Description	Order Number
1	1	Main Spring	63600-0479
2	1	Pawl Spring	63600-0480

- Repair Policy -

Molex is not in a position to repair hand tools. If the 2 springs listed above need replacing, they may be purchased from Molex. If other repairs are necessary, a new tool must be purchased.

Pistol Assembly 63600-0478



EXPLODED VIEW OF HANDTOOL
(FOR REPLACING SPRINGS)



... Worldwide Customer Service

Corporate Headquarters:

2222 Wellington Court

Lisle, IL 60532 USA

Telephone: (630) 969-4550

Telefax: (630) 969-1352

European Headquarters:

Molex Services GmbH

Dingolfinger Strasse 4

D-80000, Munich 80, Germany

Telephone: 49-89-4130920

Telex: (841) 5214425

Telefax: 49-89-401527

Northern Asia Headquarters:

Molex Far East Management Limited:

4-21-1 Minami-Naruse

Machida, Tokyo 196, Japan

Telephone: 81-42721-5539

Telefax: 81-427-21-5562

Southeast Asia Headquarters

Molex Far East Management Ltd.

110 International Road

Jurong Town, 2262 Singapore

Telephone: 65-660-8555

Telefax: 65-265-6044

U.S. Application Tooling Division

1150 E. Diehl Rd.

Naperville, IL 60563 USA

Telephone: (630) 969-4550

Telefax: (630) 505-0049