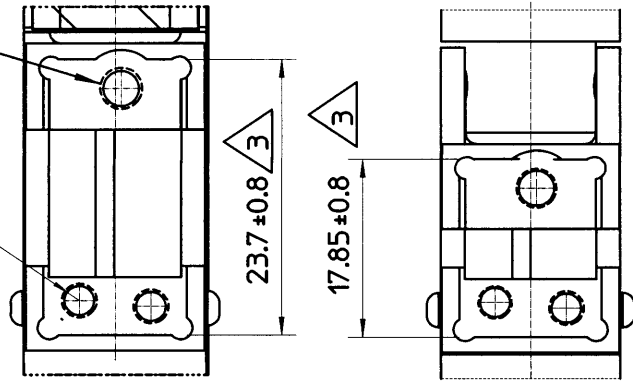


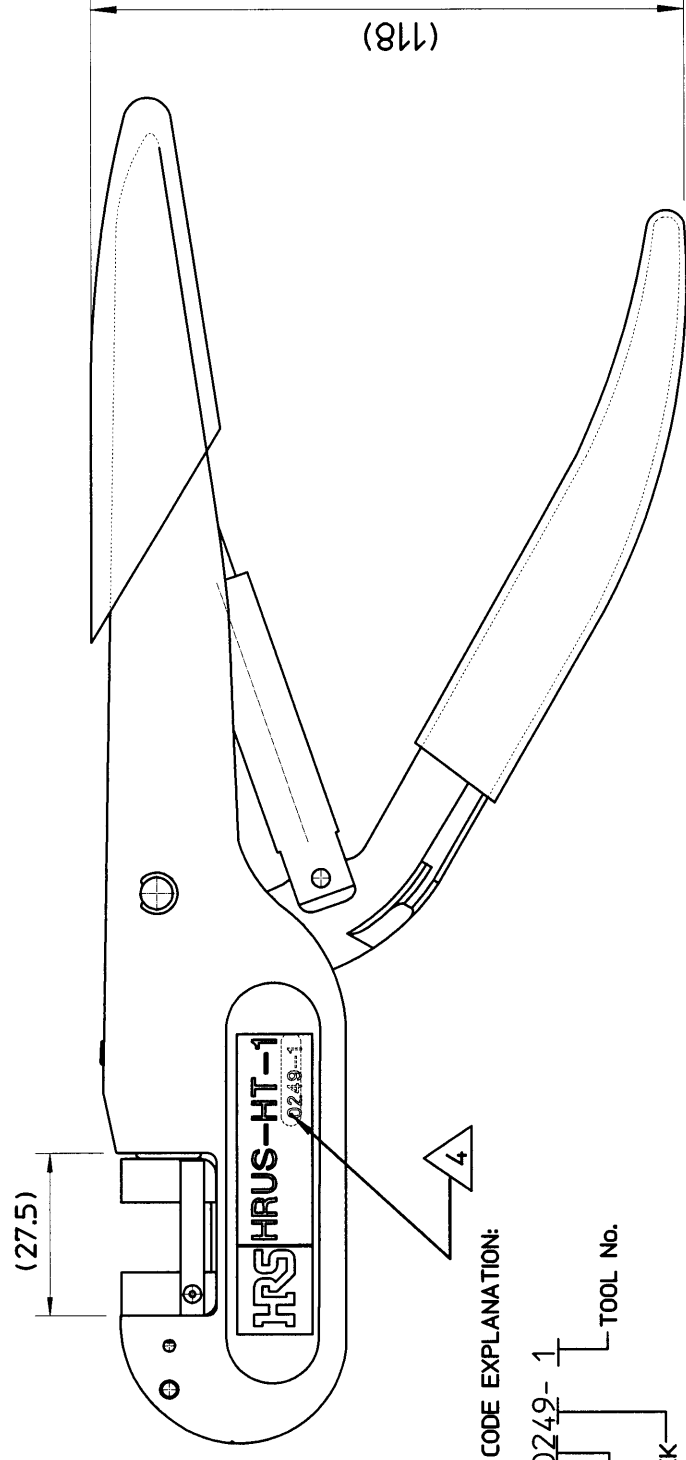
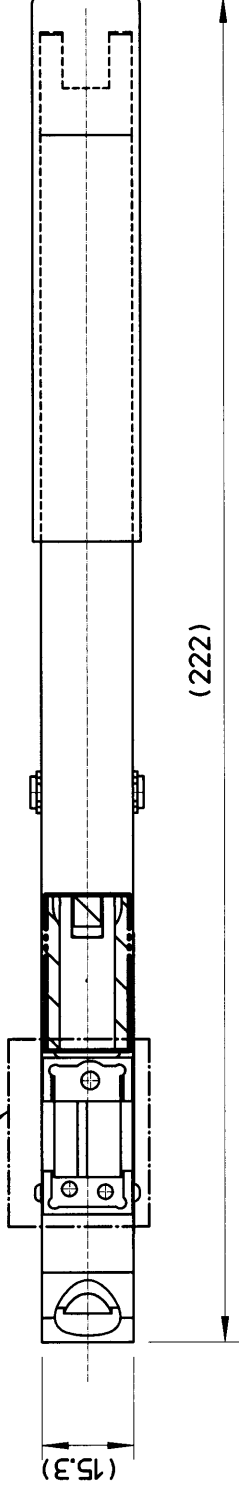
THE INFORMATION CONTAIN HEREIN IS PROPRIETARY TO HIROSE ELECTRIC (USA), INC., ALL RIGHTS THEREIN ARE RESERVED AND SHALL NOT BE USED, DUPLICATED, OR FURTHER DISSEMINATED FOR ANY PURPOSE WITHOUT THE CONSENT OF HIROSE ELECTRIC (USA), INC.

2X M2.5 X 0.45

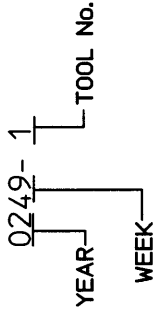


Detail 1  
Scale 2:1

see Detail 1



DATE CODE EXPLANATION:



8. PACKAGING: CARDBOARD BOX. SIZE: 254mm X 76mm X 51mm (10" X 3" X 2').

7. THIS HAND CRIMP TOOL TO BE USED WITH THE INTERCHANGABLE DIE SETS FOR CRIMPING DF3, DF11 AND DF13 CONNECTOR SERIES.

6. TOOL KIT TO BE PACKAGED IN THE ZIP-LOCK PLASTIC BAG AS SHOWN ON FIG. 1.

LABEL TO BE APPLIED AS SHOWN.

5. FOR ASSEMBLY AND OPERATION OF THIS HAND TOOL, REFER TO INSTRUCTION MANUAL P/No. PS075.

4. DATE CODE AND TOOL No.; SEE EXAMPLE FOR EXPLANATION.

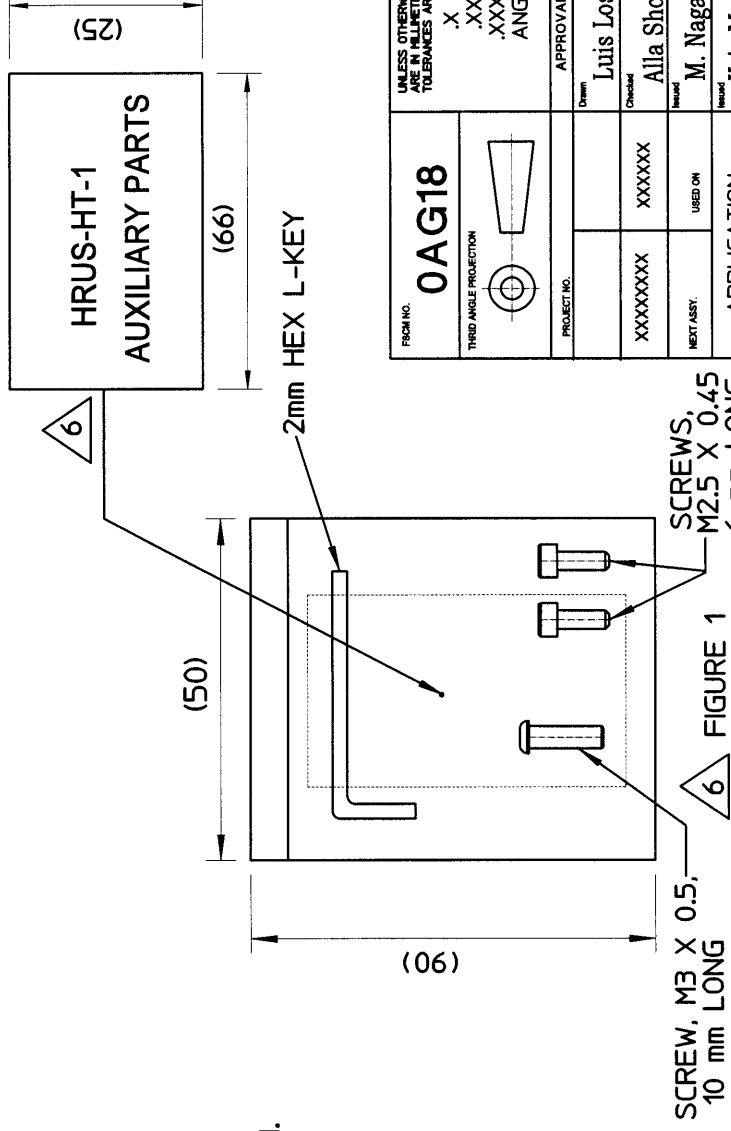
3. DIMENSION 23.7 APPLIES WHEN LEVER IS IN 'OPEN' POSITION;

DIMENSION 17.85 APPLIES WHEN THE LEVER IS IN 'CLOSED' POSITION.

2. DIMENSIONS IN ( ) ARE FOR REFERENCE ONLY.

1. DIMENSIONING AND TOLERANCING PER ANSI/ASME Y14.5M-1994

NOTES (UNLESS OTHERWISE SPECIFIED)



CUSTOMER USE DRAWING

| REVISIONS |      |                       |         |          |
|-----------|------|-----------------------|---------|----------|
| ZONE      | REV. | DESCRIPTION           | DATE    | APPROVED |
|           | N/R  | NEW RELEASE           | 2/10/03 | Kmg      |
|           | A    | REVISED PER DCN# 0864 | 3/04/03 | A.S.     |
|           | B    | REVISED PER DCN# 0872 | 5/19/03 | A.S.     |

|                          |                        |  |                          |          |
|--------------------------|------------------------|--|--------------------------|----------|
| FROM NO.<br><b>0AG18</b> | THIRD ANGLE PROJECTION | UNLESS OTHERWISE SPECIFIED DIMENSIONS ARE IN MILLIMETERS TOLERANCES ARE:<br>X - ±0.1<br>.XX - ±0.05<br>.XXX - ±0.03<br>ANGLE - ±1° | APPROVALS                | DATE     |
|                          |                        |  | PROJECT NO.              | DATE     |
| XXXXXXX                  | XXXXXX                 | XXXXXX   | Drawn<br>Luis Lostaunau  | 02/06/03 |
| XXXXXXX                  | XXXXXX                 | XXXXXX   | Checked<br>Alla Shehur   | 02/07/03 |
| XXXXXXX                  | XXXXXX                 | XXXXXX   | Released<br>M. Nagashima | 02/07/03 |
| XXXXXXX                  | XXXXXX                 | XXXXXX   | Released<br>Kris McGuire | 02/10/03 |
| APPLICATION              |                        | CL NUMBER  |                          |          |
| APPLICATION              |                        | 5910-8500-2  |                          |          |
| NEXT ASY.                |                        | SIZE   | DWG NUMBER               | REV.     |
| USED ON                  |                        | B  | HRUS-HT-1                | B        |
| SCALE                    |                        | N/A  | SHEET                    | 1 OF 1   |

**HRS** HIROSE ELECTRIC (U.S.A), INC  
SIMI VALLEY, CALIFORNIA 93065

PART NUMBER **HRUS-HT-1**