

REV. Status

PRELIMINARY 07/10/00 MP  
PRELIMINARY 1 ADDED VALUES TO T.B.D.'s 09/08/00 MP  
PRELIMINARY 2 CHANGED A.3-A.7, A.8, C, D & MARKING ON ISO DWG. 06/05/01 MP  
PRELIMINARY 3 ADDED "G" TO P/N TO INDICATE UL FAMILY CLASS. 07/16/01 MP  
PRELIMINARY 4 CHANGED DESCRIPTION 07/20/01 MP

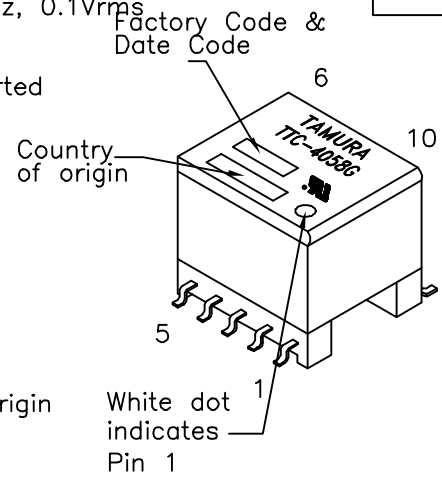
ADSL transformer designed for use with Centillium IC chips  
CT-L52DU81 (CPE Side), CT-L42DU30 (CPE Side)

- A. Electrical Specifications (@ 25°C)
  1. Primary (Line side) Impedance; 100Ω
  2. Secondary (IC side) Impedance; 22.1Ω
  3. Frequency Response; ±1.0dB @ 30KHz to 1.1MHz, 0dBm
  4. Insertion Loss; 0.5dB MAX @ 100KHz, 0dBm
  5. Longitudinal Balance; 40dB MIN @ 30KHz to 1.1MHz, 0dBm (Per ITU method pin 4 grounded)
  6. Primary Open Circuit Inductance; 5.0mH ±10% @ 10KHz, 0.1Vrms Measured (10-7) with 8 and 9 shorted
  7. Leakage Inductance; 12μH MAX @ 100KHz, 0.1Vrms Measured (10-7) with 2 & 3, 8 & 9 and 1 & 4 shorted
  8. Total Harmonic Distortion; -80dB MAX @ 40KHz
  9. DC Resistance; (1-3)=0.350Ω MAX  
(2-4)=0.400Ω MAX  
(9-7)=1.750Ω MAX  
(10-8)=1.750Ω MAX
  10. Turns Ratio; (1-4):(10-7)=1:2.125±2%  
2 & 3, and 8 & 9 shorted
  11. Dielectric Strength; 1875Vrms 1 second @ Pri to Sec

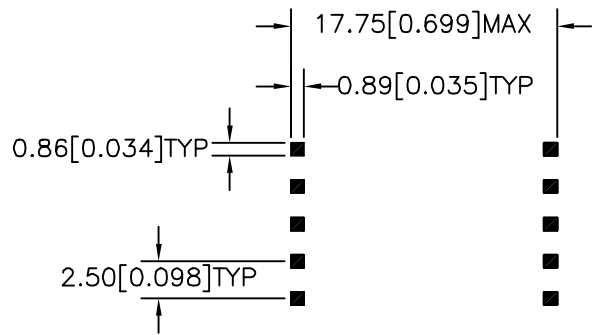
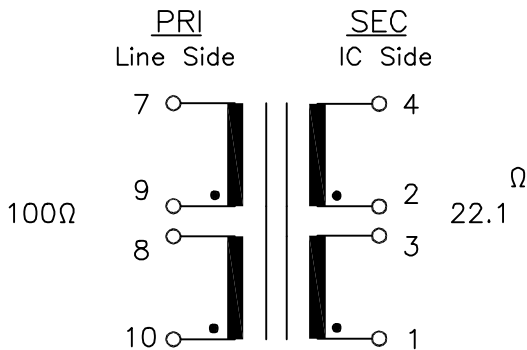
UL# E208555



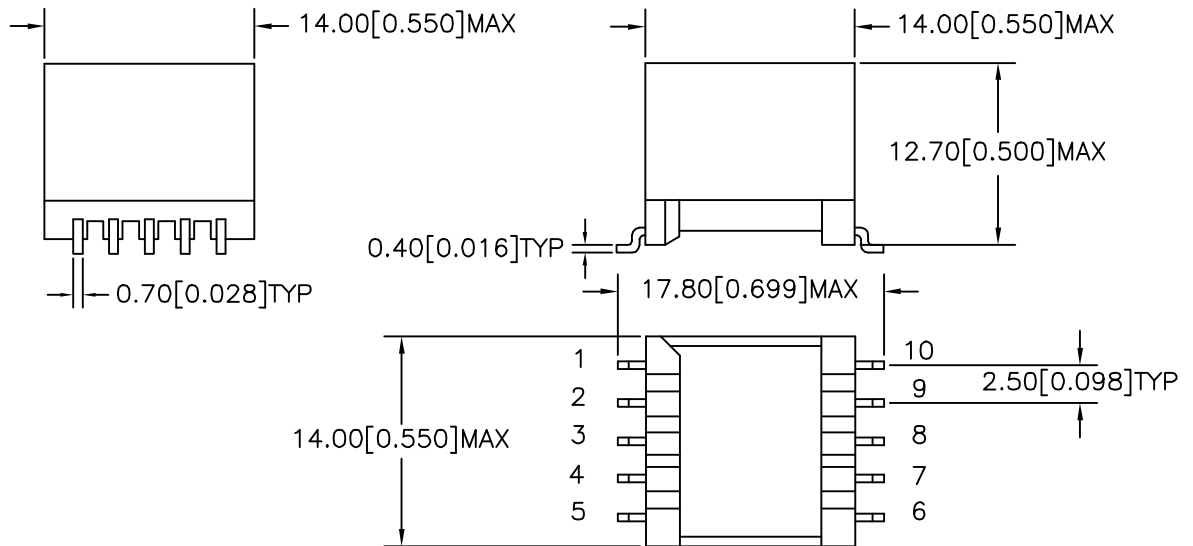
MODEL NUMBER  
TTC-4058



- B. Marking; TTC-4058G, TAMURA, date code and country of origin "G" designates UL approved family classification
- C. Safety; Complies with UL1950 3rd Edition, UL60950
- D. Schematic;



E. Mechanical Specifications;



PREPARED BY:

D. Rund

ENGINEER:

M. Pitchai

QUALITY CONTROL:

D. Kelley

APPROVED:

J. Coleman

DWG CONTROL NO. P-A1-12528  
ACAD\TTC\A1125281.DWG

REV PR4

ADSL TRANSFORMER

TAMURA CORPORATION OF AMERICA  
43352 BUSINESS PARK DRIVE, TEMECULA, CA. 92590-6624  
(909) 699-1270 FAX 9096769482

TTC-4058

MODEL SPECIFICATION

DIM: mm(in) SCL: 2/1 SH: 1 OF 1

PROPRIETARY NOTICE: THIS DRAWING PRINT OR DOCUMENT AND SUBJECT MATTER DISCLOSED HEREIN ARE PROPRIETARY ITEMS TO WHICH TAMURA RETAINS THE EXCLUSIVE RIGHT OF DISSEMINATION, REPRODUCTION, MANUFACTURE AND SALE. THIS DRAWING, PRINT OR DOCUMENT IS SUBMITTED IN CONFIDENCE FOR CONSIDERATION BY THE RECIPIENT ALONE UNLESS PERMISSION FOR FURTHER DISCLOSURE IS EXPRESSLY GRANTED IN WRITING.