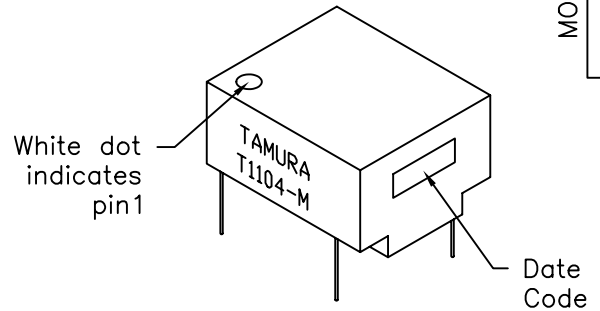


REVISION -
04/23/03 JC

REVISION A
NEW
PACKAGE
REPLACING
P-A1-12147
10/28/03 JC

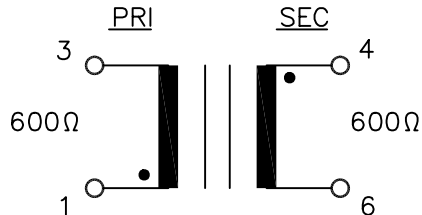
A. Electrical Specifications (@ 25°C)

1. Pri Source Impedance: 600Ω
2. Sec Load Impedance: 600Ω
3. Operating Level: -45dBm to +7dBm and 0mA DC
4. Insertion Loss: 1.0dB TYP @ 1KHz, 0dBm
5. Frequency Response (Relative to 1KHz):
±0.5dB @ 300Hz to 3.5KHz, 0dBm
6. DC Unbalance: 0mA DC
7. Total Harmonic Distortion: 0.5% MAX
8. Return Loss: 26dB MIN
9. Longitudinal Balance:
60dB MIN @ 200Hz to 1KHz
40dB MIN @ 1KH to 4KHz
10. DC Resistance:
1-3 = 46Ω ±15%
4-6 = 63Ω ±15%
11. Dielectric Strength:
1500Vrms, 1 minute @ Pri to Sec and Pri to Core



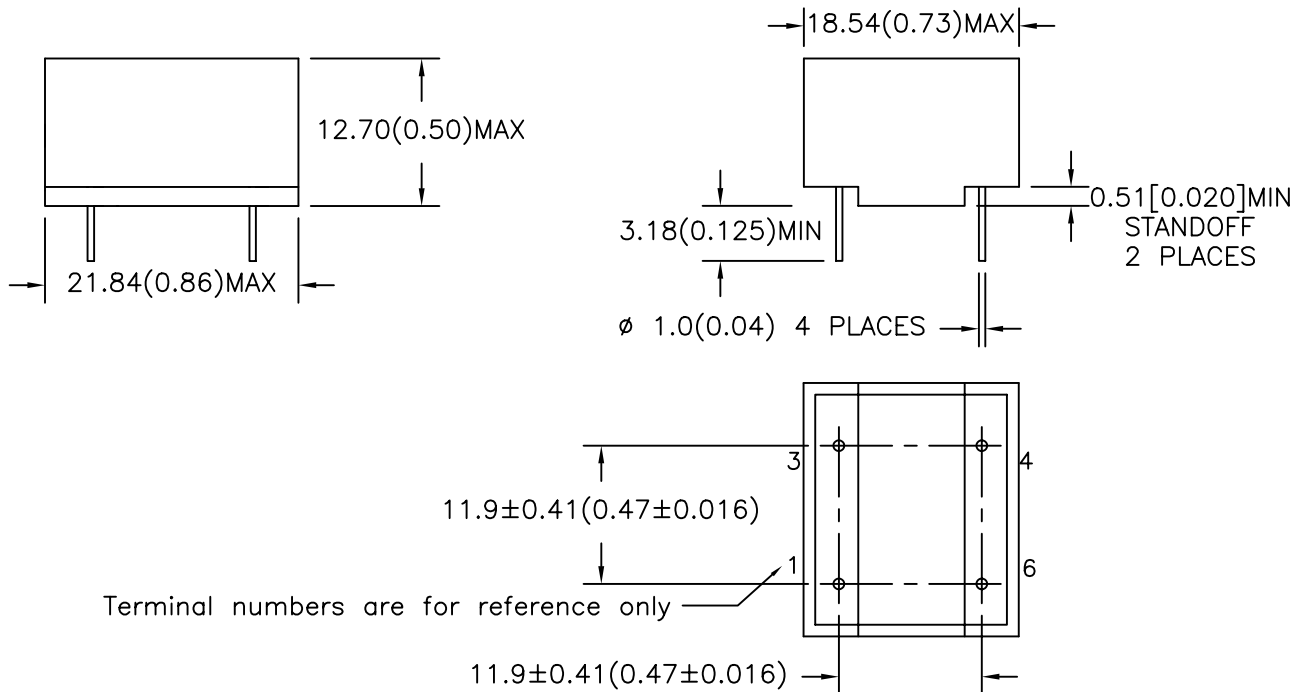
B. Marking: TAMURA, T1104-M, Date Code

C. Schematic Diagram:



D. Mechanical Specifications:

All dimensions shown are nominal unless otherwise specified



Terminal numbers are for reference only

TOLERANCES (mm)	
≤ 4	± 0.2
4 ≤ 20	± 0.3
20 ≤ 50	± 0.4

PREPARED BY:

D. Rund
ENGINEER:
Y. Sekiguchi
QUALITY CONTROL:
T. Clem
APPROVED:

DRAWING CONTROL NO.
P-A1-13228
ACAD\MXFMR\A1132281.DWG

REV
A

MODEL DESCRIPTION
TELECOMMUNICATION COUPLING
TRANSFORMER

MODEL SPECIFICATION
T1104-M

CONTENTS OF THIS DRAWING ARE
SUBJECT TO CHANGE WITHOUT
PRIOR NOTICE

TAMURA CORPORATION OF AMERICA
43352 BUSINESS PARK DRIVE, TEMECULA, CA. 92590-6624
(909) 699-1270 FAX 9096769482

DIM: mm(ln) SCL: 2/1 SH: 1 OF 1

PROPRIETARY NOTICE: THIS DRAWING PRINT OR DOCUMENT AND SUBJECT MATTER DISCLOSED HEREIN ARE PROPRIETARY ITEMS TO WHICH TAMURA RETAINS THE EXCLUSIVE RIGHT OF DISSEMINATION, REPRODUCTION, MANUFACTURE AND SALE. THIS DRAWING, PRINT OR DOCUMENT IS SUBMITTED IN CONFIDENCE FOR CONSIDERATION BY THE RECIPIENT ALONE UNLESS PERMISSION FOR FURTHER DISCLOSURE IS EXPRESSLY GRANTED IN WRITING